



# 7

## Imperatives Directions

- Getting Around Town
- Public Transportation

### VOCABULARY PREVIEW



1. airport
2. baseball stadium
3. concert hall
4. courthouse
5. flower shop

6. hardware store
7. ice cream shop
8. motel
9. museum
10. parking garage

11. pet shop
12. playground
13. shoe store
14. toy store
15. university



# Can You Tell Me How to Get to . . . ?

walk up  
walk down

on the right  
on the left

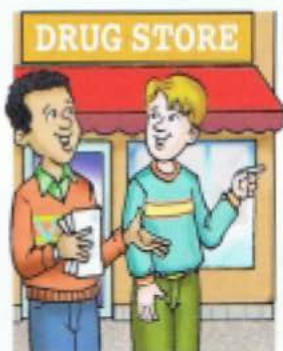
across from  
next to  
between



*laundromat?*

- A. Excuse me. Can you tell me how to get to the laundromat from here?
- B. Sure. Walk up Main Street and you'll see the laundromat on the right, across from the drug store.

A. Thank you.



*post office?*

- A. Excuse me. Can you tell me how to get to the post office from here?
- B. Sure. Walk down Main Street and you'll see the post office on the left, next to the high school.

A. Thank you.



1. *clinic?*



2. *police station?*



3. *drug store?*



4. *library?*



5. *barber shop?*



6. *toy store?*



# Could You Please Tell Me How to Get to . . . ?

walk along

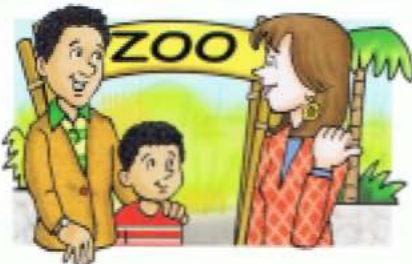
on the right  
on the left

across from  
next to  
between



hospital?

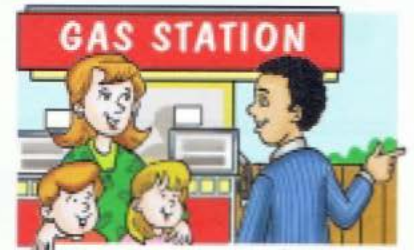
- A.** Excuse me. Could you please tell me how to get to the hospital from here?
- B.** Sure. Walk along Central Avenue and you'll see the hospital on the left, between the museum and the park.
- A.** Thanks.



1. museum?



2. university?



3. park?



4. hotel?



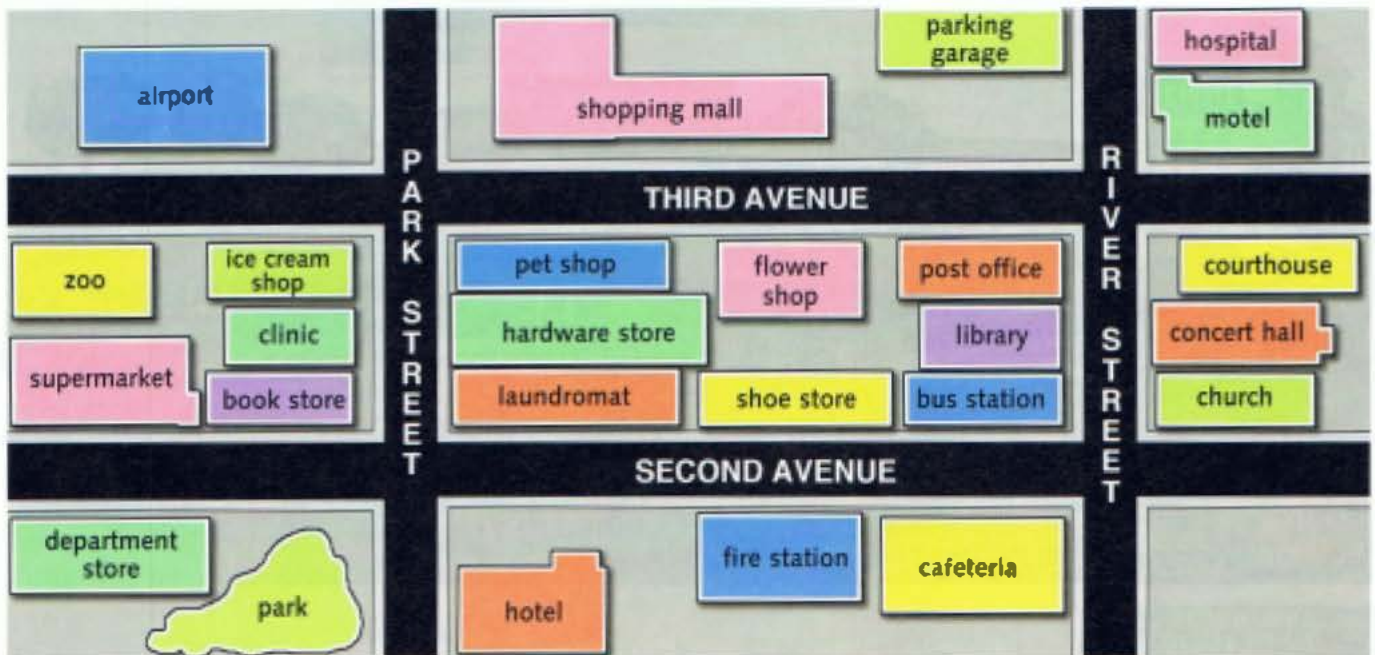
5. parking lot?



6. zoo?

# Would You Please Tell Me How to Get to . . . ?

turn left      turn right



*bus station?*

- A. Excuse me. Would you please tell me how to get to the bus station from here?
- B. Certainly. Walk up Park Street to Second Avenue and turn right. Walk along Second Avenue and you'll see the bus station on the left, across from the cafeteria.
- A. Thanks very much.



*concert hall?*

- A. Excuse me. Would you please tell me how to get to the concert hall from here?
- B. Certainly. Drive along Second Avenue to River Street and turn left. Drive up River Street and you'll see the concert hall on the right, between the courthouse and the church.
- A. Thanks very much.





1. hospital?



2. zoo?



3. shoe store?



4. laundromat?



5. supermarket?



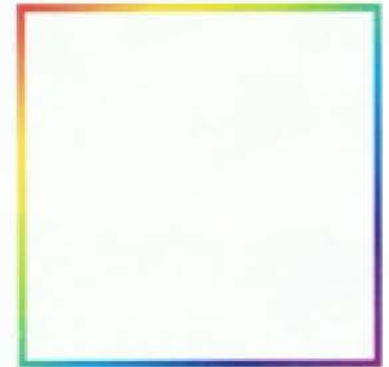
6. post office?



7. clinic?



8. airport?



9.

## How to Say It!

### Asking for Repetition

- A. I'm sorry. Could you please { repeat that?  
say that again?
- B. Sure. Walk along ...

Practice some conversations on this page again.  
Ask people to repeat the directions.

