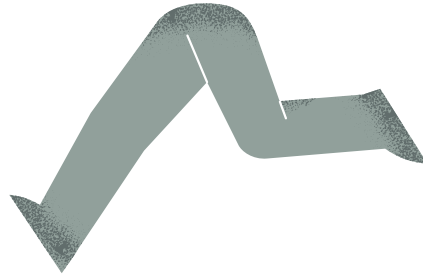
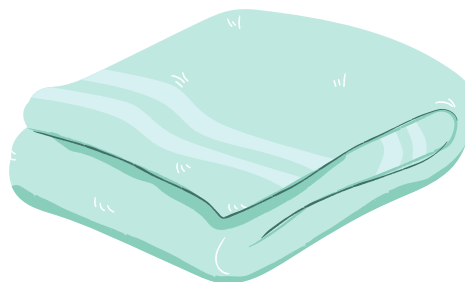


LlBegins with **l****lamp****leg****lion****love****lunch**Ends with **l****ball****towel****pencil**

Rr

Begins with r

rat



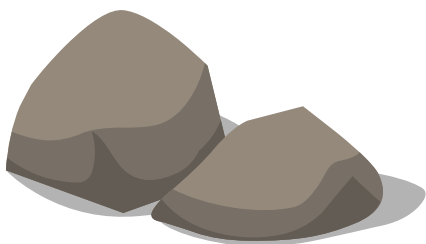
red



ribbon



rock



run



Ends with r

car



eraser



color

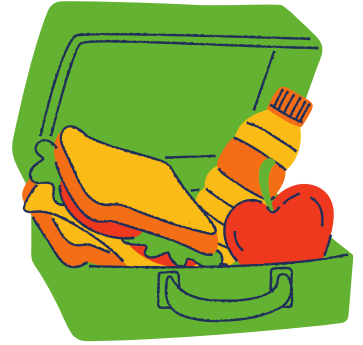
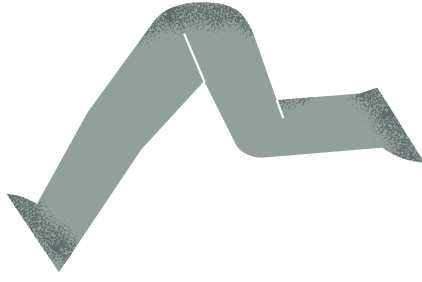
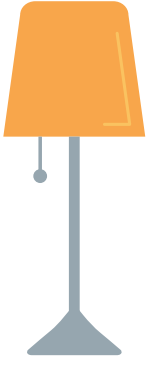


Ll

Rr

Say the word.

Does it begin with **l** or **r**?



Say the word.

Does it end with **l** or **r**?

