

Mouse is spelled with ou.



## Let's Learn

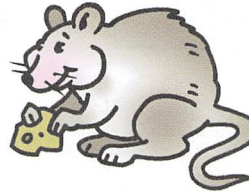
A. Listen and speak. Track 32



house



cloud



mouse



loud

## Let's Practice

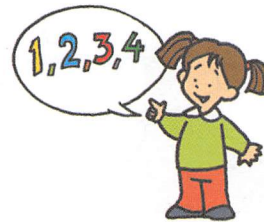
A. Write.



sp\_\_t



cl\_\_d

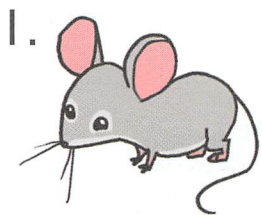


c\_\_nt



gr\_\_nd

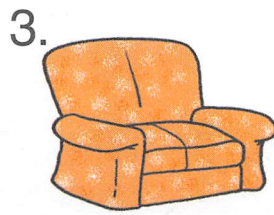
B. Listen. Circle or write X. Track 33



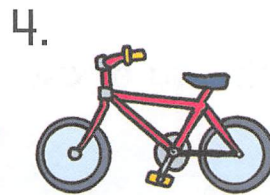
OU



OU



OU



OU

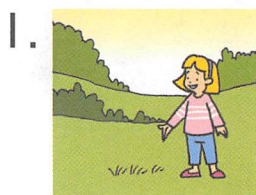


OU

C. Listen and color. Track 34

OU = ou

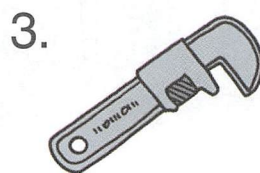
= not ou



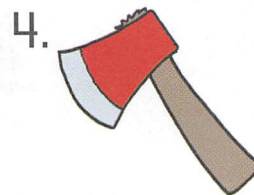
OU



OU



OU



OU



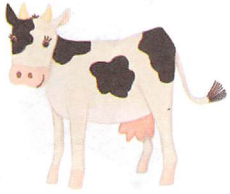
OU

Owl is spelled with ow.

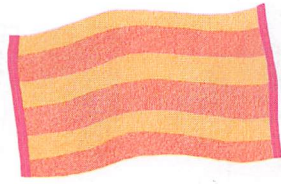


## Let's Learn

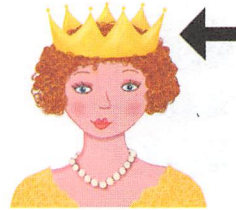
A. Listen and speak.  Track 35



cow



towel



crown



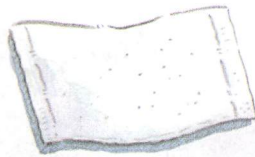
clown

## Let's Practice

A. Write.



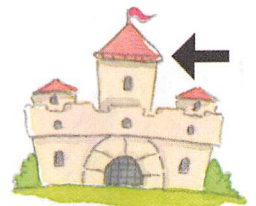
h\_\_l



t\_\_el

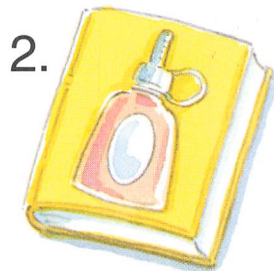
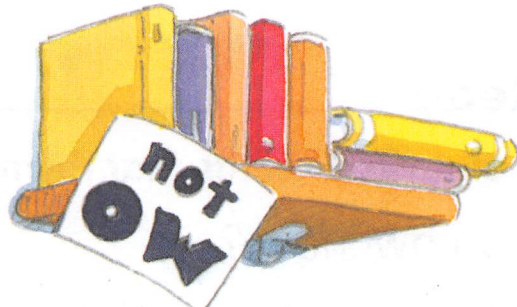


cl\_\_n



t\_\_er

B. Listen and match.  Track 36



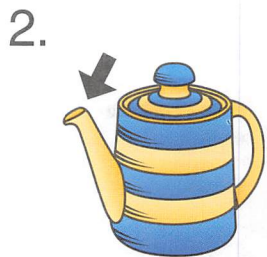


## Let's Choose

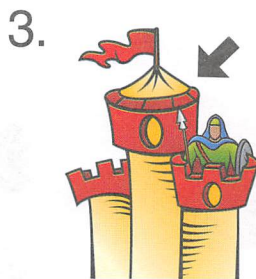
A. Write ou or ow.



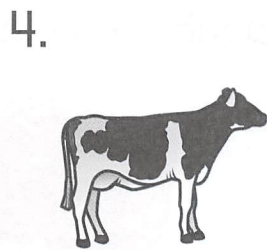
m\_\_se



sp\_\_t



t\_\_er



c\_\_



cl\_\_n

B. Write.

crown

house

loud

howl

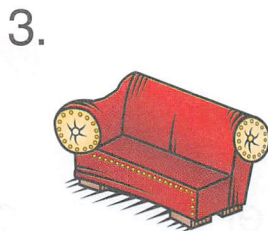
couch



\_\_\_\_\_



\_\_\_\_\_



\_\_\_\_\_



\_\_\_\_\_



\_\_\_\_\_

## Let's Read

A. Read and circle words that rhyme. Then circle yes or no.

1. Can an owl howl?

Yes  No

2. Is a mouse on a house?

Yes  No

3. Is a cloud loud?

Yes  No

4. Is a crown on a clown?

Yes  No

