

IELTS SPEAKING LESSON 4



Part 1 Questions

- Could you tell me a typical day of yours?
- How do you get your job?
- Are you satisfied with your job?
- What do you like most about your job?
- What kind of job do you prefer in the future?

IELTS[™]
English for International Opportunity

The test
that sets the
standard

Describe a museum

- How often do you visit the museum?
- Which type of museum is popular in your country?
- Why do you want to visit the museum?

Follow up

What do you think is the importance of museums in history?

How do you think of a heritage of a country?

Compare the museum nowadays and the past?

Part 3 Questions



Describe an object you like

- Do possessions make people happy?
- Why do people buy things?
- Are people in your country wise consumers?
- Students please do not hesitate to ask your coaches if there are things that you want to be clarified on.
- Teachers, make sure that you have listened carefully to the student's answer. Make immediate corrections on any grammar mistakes committed. As you listen to the student's answer, you typed the sentences with errors and after the student said his/her answer make room for corrections.

IELTS[™]
English for International Opportunity

The test
that sets the
standard

Now look at the table below, which shows the changes in economic activity in a town over a period of five years. The figures on the left and right show the number of people involved in these activities, in thousands.

Write your own sentences to describe the situation in the town regarding the number of:

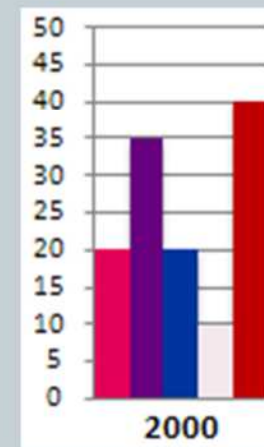
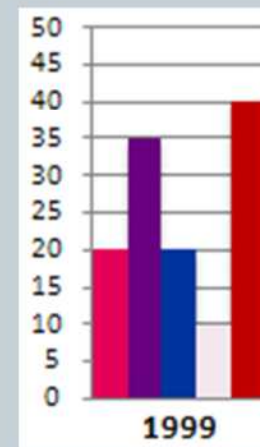
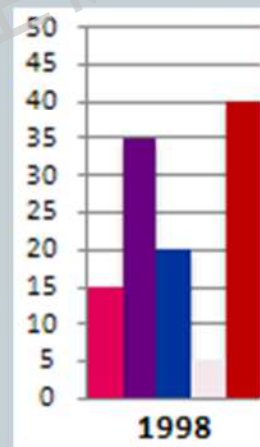
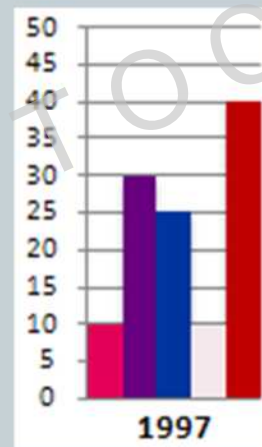
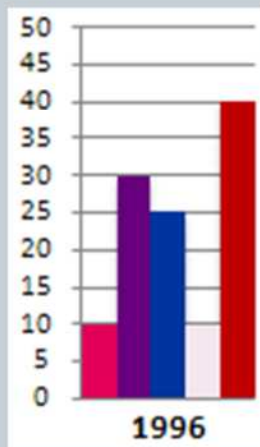

Number of people
in industry


Number of people
in retail


Number of semi-skilled/skilled
people in public services (including
police, doctors, bus drivers, etc.)


Number of people
in tourism


Number of
unemployed





1. People employed in industry between 1996 and 2000.
a)
2. People employed in retail between 1996 and 2000.
a)
3. People employed in public services between 1999 and 2000.
a)
4. People employed in tourism between 1996 and 2000.
a)
5. Unemployed between 1998 and 2000.
a)
6. People employed in industry compared with those in tourism in 1996.
a)
7. People employed in industry between 1998 and 1999.
a)