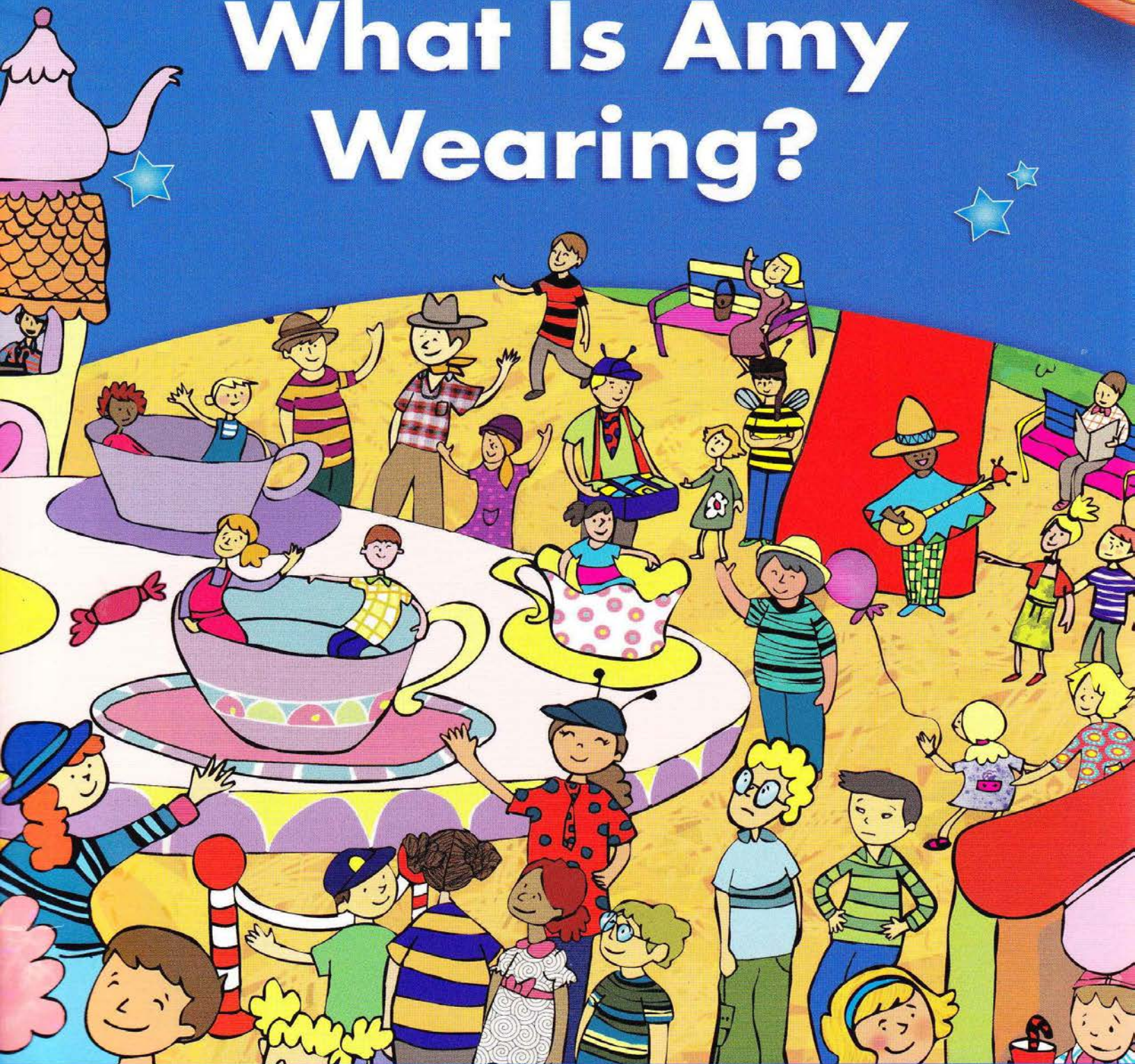


LET'S
GO **3**

READER 4

What Is Amy Wearing?



Lynne Robertson

OXFORD



READER 4



What Is Amy Wearing?




Lynne Robertson
Illustrated by Caroline Pala



CD Track 14: Story read with sound effects. Turn page after  sound.



CD Track 15: Story read without sound effects. Turn page after  sound.

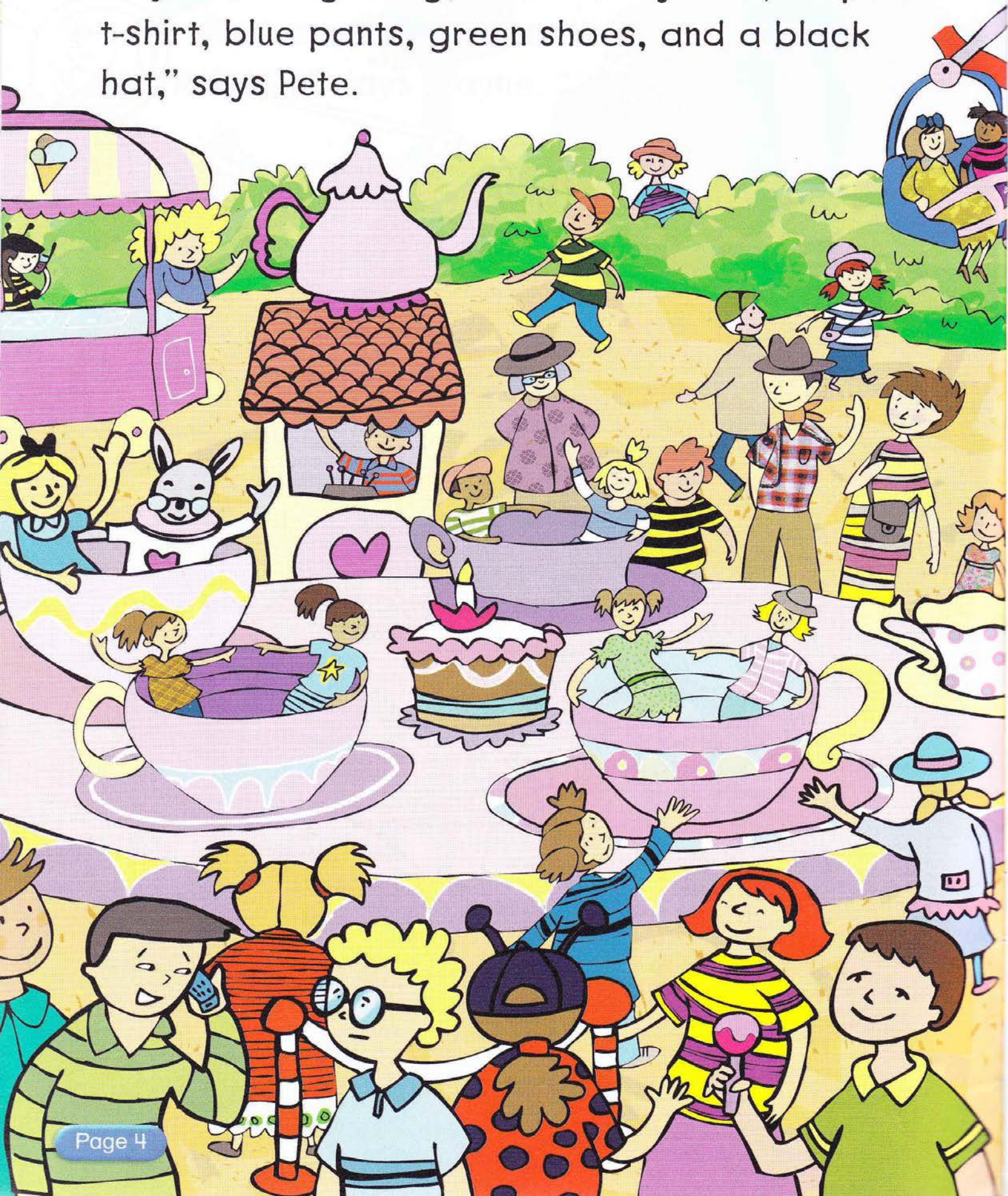
New words are in **red**.



OXFORD
UNIVERSITY PRESS



“Amy’s wearing a big, black and yellow, striped t-shirt, blue pants, green shoes, and a black hat,” says Pete.

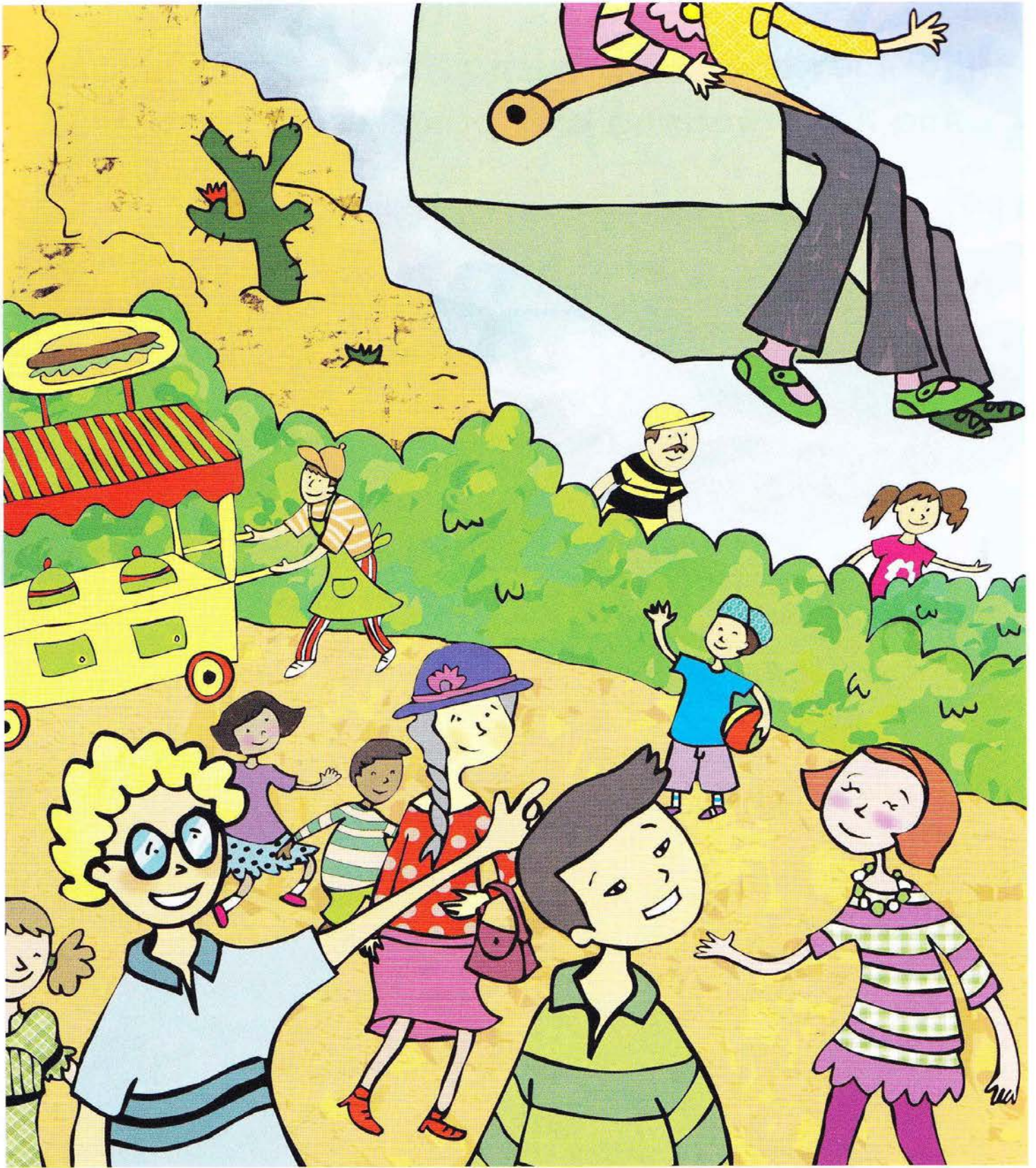




“Is that her big, striped t-shirt?” asks Wayne.

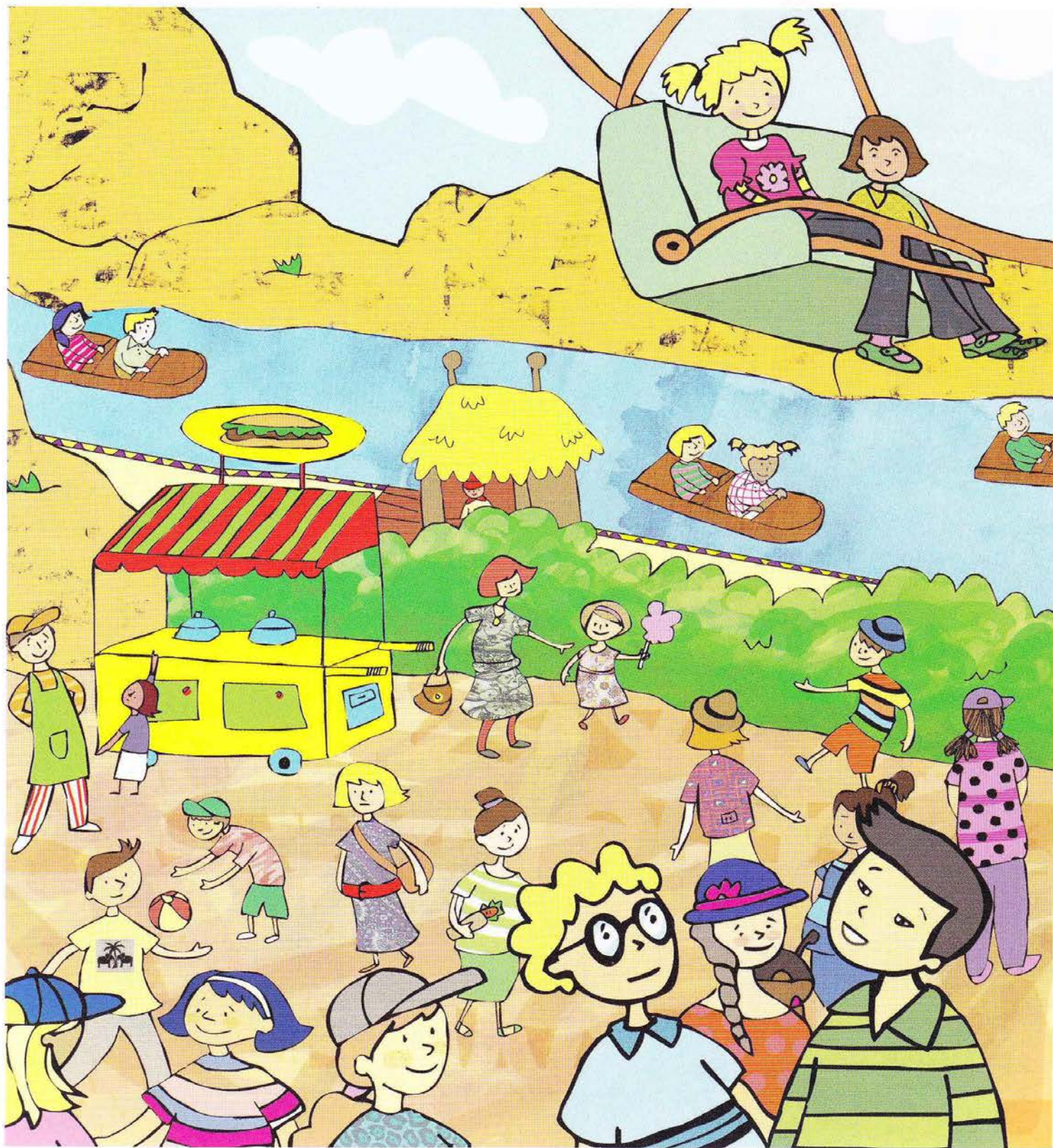
“No, it isn’t. That girl’s wearing a big, polka dot t-shirt. Amy’s wearing a striped t-shirt,” says Pete.





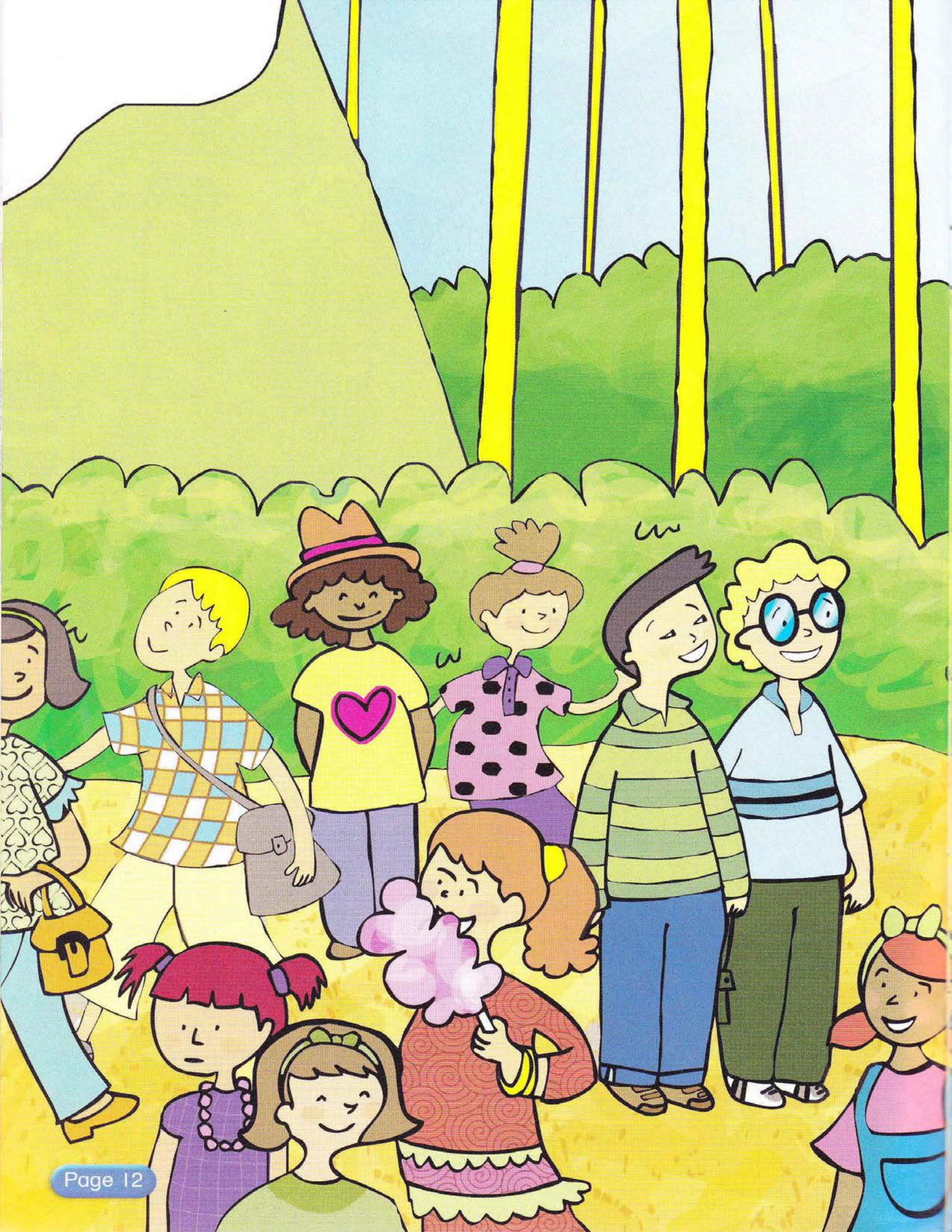
“Are those her green shoes?” asks Wayne.

“No, they aren’t. My sister’s shoes are different.
And Amy’s wearing blue pants,” says Pete.



“Look! Is that Amy? That girl is wearing blue pants,”
says Wayne.





“Here’s Amy!” says Pete.

“Oh! She’s wearing a bee costume!” says Wayne.

“Hi, Pete and Wayne! Do you want some candy?” asks Amy.





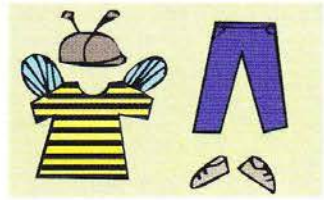
Exercise 1. Match.



Track 16

1. striped

a.



2. checked

b.



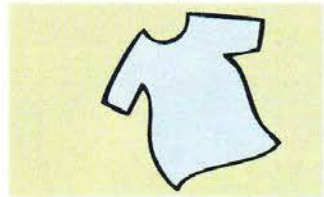
3. polka dot

c.



4. costume

d.



5. shorts

e.



6. t-shirt

f.

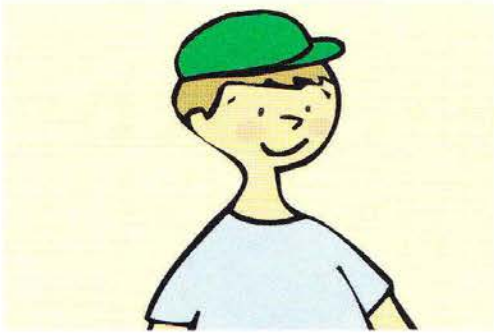




Exercise 2. Read and circle.

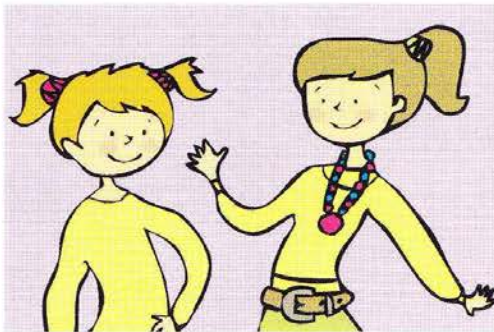


1.



- a. He's wearing a little green hat.
- b. He's wearing a green polka dot hat.

2.



- a. They're wearing new, little, yellow sweatshirts.
- b. They're wearing new, little, yellow t-shirts.

Exercise 3. Fill in the blanks.



1. What's she _____?

- a. shorts
- b. wearing
- c. striped

2. She's wearing a _____, striped t-shirt.

- a. big
- b. not
- c. polka dot

3. Are _____ her shoes?

- a. that
- b. those
- c. different