

# Unit 2 Comparing Animals

## Let's Talk



### A Listen and say.

CD1  
19



**Andy:** Did you know that a zebra is slower than a gazelle?

**Scott:** Really? I didn't know that.



**Andy:** Which animal is faster? A cat or a polar bear?

**Scott:** I'm not sure. I think a polar bear is probably faster.

**Andy:** No! A cat is as fast as a polar bear!

**Scott:** Wow! Are you sure? That's interesting!



**Andy:** A man is faster than a skunk.

**Scott:** Are you sure?

**Andy:** Yes, I'm sure. Look!

**Scott:** That's good! He can run away!

CD1  
20

Are you sure?  
Yes, I'm sure.  
No, I'm not sure.



**B Practice the words. Ask and answer.**

CD1  
21



1. a wolf  
64 kph



2. a zebra  
64 kph



3. a cheetah  
114 kph



4. a gazelle  
80 kph



5. a rhinoceros  
43 kph



6. a polar bear  
43 kph



7. a squirrel  
19 kph



8. a skunk  
12 kph

CD1  
22

Is a **wolf** as fast as a **zebra**?  
Yes, it is. No, it isn't. It's **slower**.

fast → as fast as → faster than  
slow → as slow as → slower than

**C Listen and chant.**

CD1  
23

**A Gazelle Is as Fast as a Lion**

A gazelle is as fast  
as a lion.

But a lion is smarter  
than a cow.

You're probably right,  
but I'm not sure.

Is a lion smarter  
than a cow?



A rhino is bigger than  
a zebra.

But it's smaller than a  
polar bear.

You're probably right,  
but I'm not sure.

Is it smaller than  
a polar bear?



Some skunks are as little  
as squirrels.

Some skunks are as big  
as cats.

You're probably right,  
but I'm not sure.

Is a skunk as big as  
a cat?



# Let's Learn



## A Learn the words. CD1 24



polar bear



dog



gazelle

1. fast → faster → fastest



squirrel



skunk



turtle

2. slow → slower → slowest



cheetah



rhinoceros



elephant

3. large → larger → largest



puppy



kitten



mouse

4. small → smaller → smallest

## B Ask and answer. CD1 25

Scott and Jenny are at an animal exhibit. They are learning about the speed and size of animals.



Which one is **faster**?

The **gazelle** is **faster**. The **gazelle** is **faster** than the **polar bear**.

**C** Ask and answer. CD1  
26

1. fast



cheetah



polar bear



zebra

2. slow



cat



wolf



turtle

3. large



lion



rhinoceros



cow

4. small



mouse



skunk



squirrel

Which one is the fastest?  
The cheetah is the fastest.

**D** Listen and chant. CD1  
27 

### Cheetah Chant

A greyhound is fast,  
Faster than a cat,  
But a cheetah is the fastest of all.

A rabbit is fast,  
Faster than a cat,  
But a cheetah is the fastest of all.

A racehorse is fast,  
Faster than a fox,  
But a cheetah is the fastest of all.

A rabbit is faster  
than a baby kangaroo,  
But a cheetah is the fastest of all.





# Let's Learn More



## A Learn the words. CD1 28



1. colorful



2. graceful



3. expensive



4. delicious

## B Say these. CD1 29



The polar bear is the least colorful.



The squirrel is less colorful than the frog.



The frog is colorful.



The fish is more colorful than the frog.



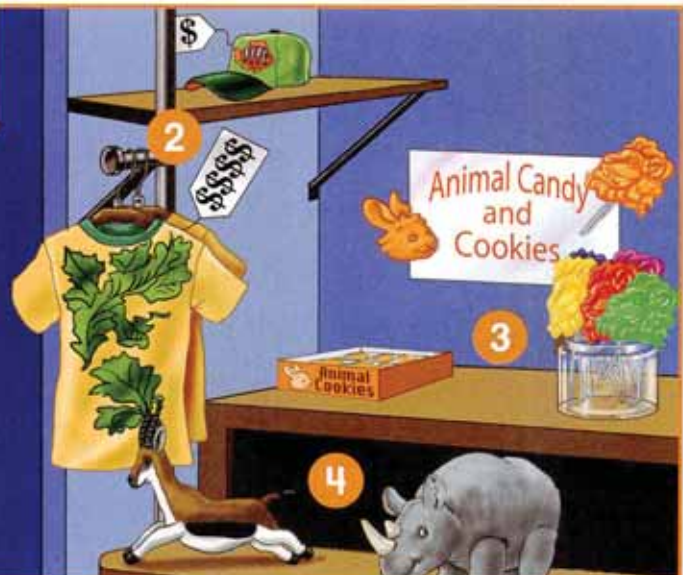
The bird is the most colorful.

## C Ask and answer. CD1 30

Kate and Jenny are in the zoo gift shop. They are comparing gifts.



1



2

3

4

Which one is more colorful?  
The fish is more colorful.

Which one is less colorful?  
The frog is less colorful.



**D** Play a game. Ask and answer.

CD1  
31

Which one is the most **graceful**?  
The **gazelle** is the most **graceful**.

Which one is the least **graceful**?  
The **elephant** is the least **graceful**.

The graphic is divided into six sections by a large blue pencil:

- Top-left (yellow background):** Labeled "graceful". Contains a bear, an elephant, and a gazelle.
- Top-right (orange background):** Labeled "delicious". Contains a bowl of fruit, a slice of cheese, and a slice of bread.
- Middle-right (purple background):** Labeled "expensive". Contains a mobile phone (\$), a laptop (\$\$\$), and another mobile phone (\$\$).
- Bottom-left (blue background):** Labeled "expensive". Contains a white shirt (\$), a blue skirt (\$\$), and a red patterned dress (\$\$\$).
- Bottom-right (pink background):** Labeled "delicious". Contains a banana, a cup of ice cream, and a plate of ribs.
- Bottom (light green background):** Labeled "colorful". Contains a parrot, a polar bear, a zebra, and a rhinoceros.
- Bottom (light blue background):** Labeled "graceful". Contains a cheetah and a squirrel.
- Bottom (light yellow background):** Labeled "colorful". Contains a colorful car, a black truck, and a steam train.

**E** Ask and answer. Look at the pictures in **D**.

CD1  
32

Is the **skirt** more **expensive** than the **shirt**?  
Yes, it is.  
No, it isn't.





**A** Listen and read along. Then read again.

CD1  
33

## What Do You Know About Animals?

Polar bears have a good sense of smell. They can smell fish under the ice from far away. They are strong, and they can smash open ice blocks to catch the fish.



Zebras are not colorful, and they can't change color. But every zebra's stripes are different, just like fingerprints.



The mimic octopus isn't colorful. But it can change its color and shape. It can look like a jellyfish, a snake, or fifteen different animals.



A hummingbird is one of the smallest and lightest birds. It is lighter than a coin, and it can fly backwards.



A box jellyfish has 24 eyes. It is shaped like a box.

### New Words

smash	change
hummingbird	fingerprints
backwards	jellyfish
mimic octopus	shape

**B** Choose the correct answer.

CD1  
34

- What animal can change color and shape?
  - a jellyfish
  - a mimic octopus
- Is a coin heavier than a hummingbird?
  - Yes, it is.
  - No, it isn't.



## C Understand the vocabulary.

It can **look like** fifteen different animals.

What does **look like** mean?

a.



b.



c.



## D Ask your partner.

1. What bird can fly backwards?
2. Which animal is the most interesting? Why?

## E Listen and write. Do you hear **ar** or **ir**?

CD1  
35



1. b \_\_\_\_ d

2. sc \_\_\_\_ f

3. th \_\_\_\_ d

4. c \_\_\_\_ d

5. sh \_\_\_\_ k

## F Learn about words. Read and write.



small

small + **est**

smallest



1. light → \_\_\_\_\_

2. slow → \_\_\_\_\_

3. tall → \_\_\_\_\_

4. strong → \_\_\_\_\_