

Unit 3 Places

Let's Talk



A Listen and say.

CD1
47

Excuse me. Where's the nurse's office?

It's next to the gym.
Follow me.

OK.

FLU

There are many ways to catch the flu. It is usually spread by coughing or sneezing. It can also be spread by touching surfaces that someone who is sick has touched. To help prevent the flu, you should wash your hands often with soap and water. You should also avoid close contact with people who are sick. If you get the flu, you should stay home and rest. You should also see a doctor if you have a fever, sore throat, or difficulty breathing.

Here's the nurse's office.

NURSE'S
OFFICE

Thanks for your help.

You're welcome.

CD1
48

Thanks for your help.
You're welcome.

B Practice the words. Ask and answer.

1. music room

2. classroom

3. gym



4. art room

5. lunchroom

6. office

CD1
50

Where's the **lunchroom**?

It's **next to** the **art room**.

It's **across from** the **classroom**.

It's **between** the **art room** and the **office**.



across from



between



next to

C Listen, point, and sing.

CD1
51

Where's the Classroom?

Where's the classroom?

It's next to the gym.

Where's the classroom?

It's next to the gym.

Where's the gym?

It's next to the classroom.

Where's the classroom?

It's next to the gym.

Where's the music room?

It's across from the art room.

Where's the art room?

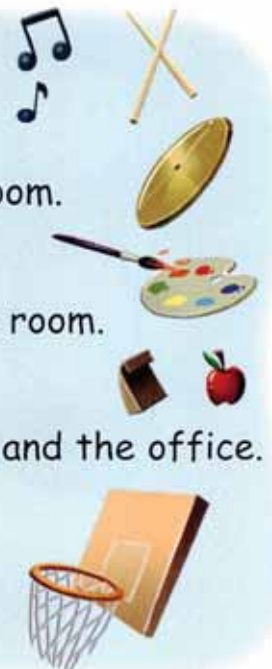
It's across from the music room.

Where's the lunchroom?

It's between the art room and the office.

Where's the office?

It's across from the gym.



Let's Learn



A Learn the words.

CD1
52



1. clinic



2. repair shop



3. office



4. factory



5. store



6. bakery

B Ask and answer.

CD1
53



CD1
54

Where's he going?
He's going to the store.

C Ask and answer. CD1
55



CD1
56

Are they going to the **office**?
Yes, they are.
No, they aren't.

D Listen, point, and chant. CD1
57

Where Are You Going?

Where are you going?
I'm going to the park.
Are you going with Tom?
No, I'm going with Mark.

Where is Sue going?
She's going to the store.
Is she going at three?
No, she's going at four.

Where is Jack going?
He's going to Brazil.
Is he going with Bob?
No, he's going with Bill.

Let's Learn More



A Learn the words.

CD1
58



1. by car



2. by bike



3. on foot



4. by bus



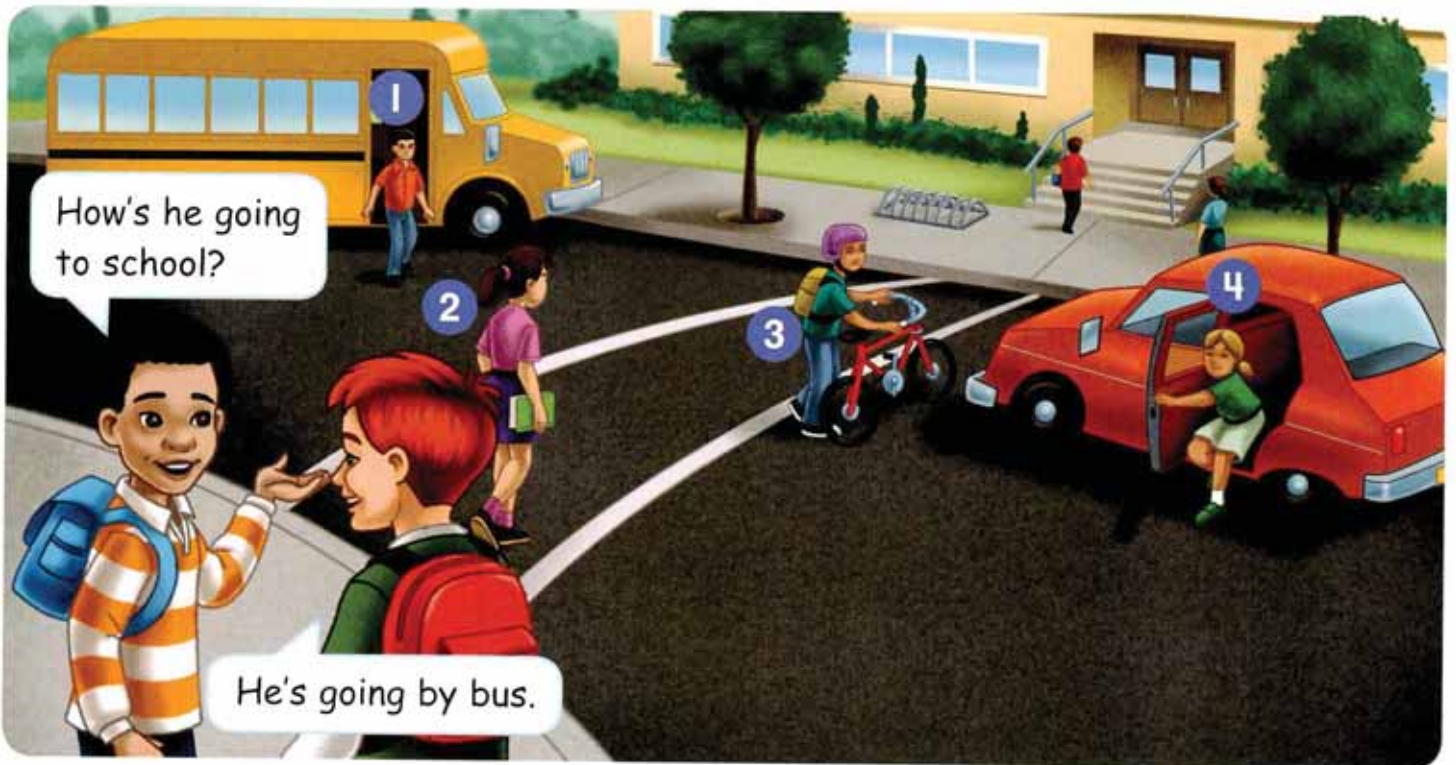
5. by taxi



6. by train

B Ask and answer.

CD1
59



CD1
60

How's **he** going to school?

He's going by bus.

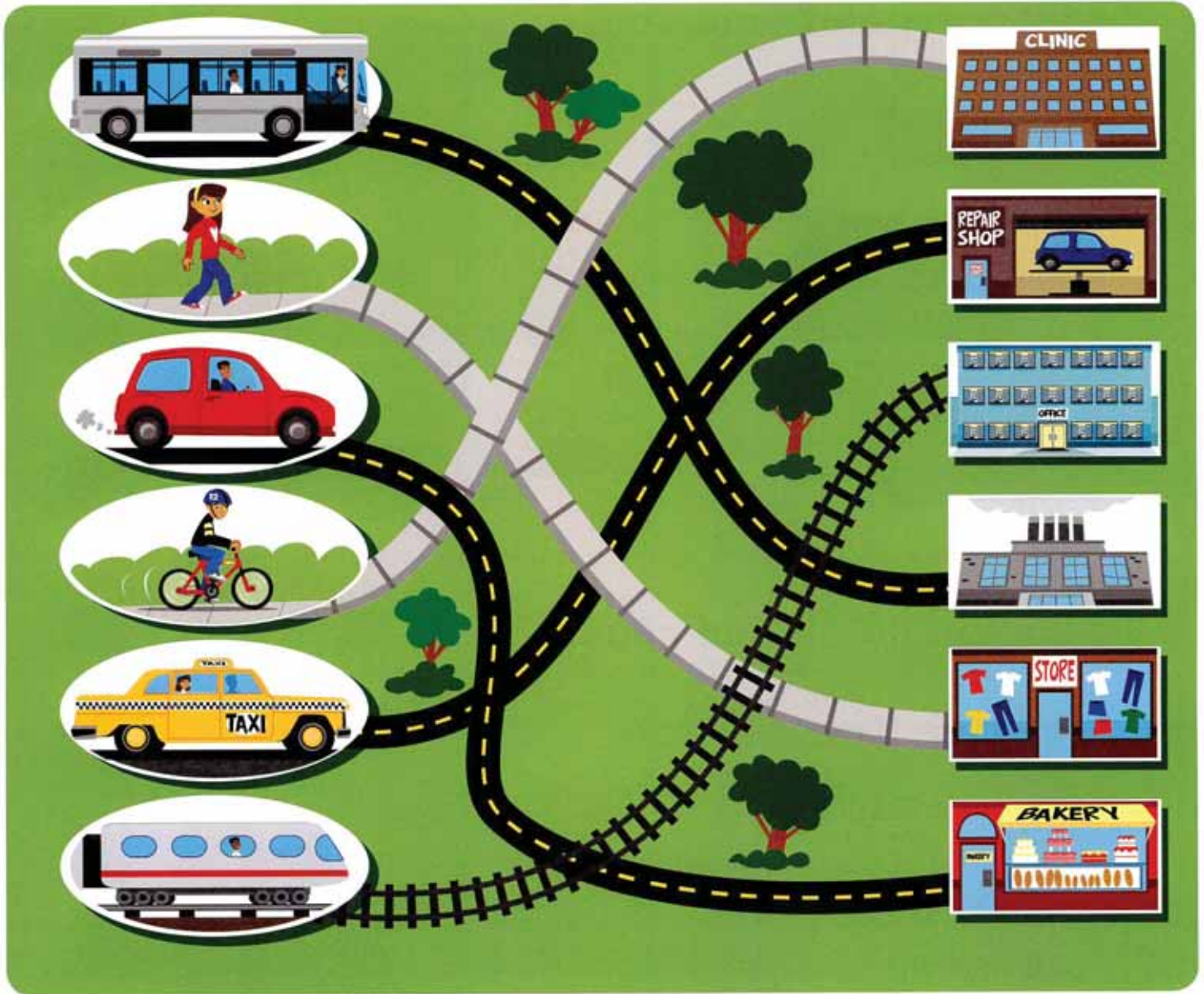
C Play a game. Ask your partner. CD1
61

Where's **he** going?

He's going to the **factory**.

How's **he** going there?

He's going **by bus**.



D What about you?

How do you go to school?

How do you go to the park?

How do you go to the store?



A Listen, point, and say.

CD1
62

cl

class



fl

flower



sl

sleep



clock



fly



slow



B Listen, point, and chant.

CD1
63



Watch the Clock

Slow, not fast!
Sit, don't slide!
Watch the clock,
Not the fly!



C Listen and read along.

CD1
64

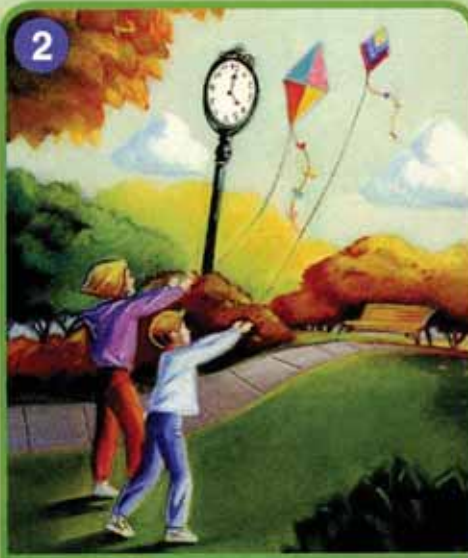


1



Marta lives in Peru.
At 9:00 a.m., she is in English class at school.

2



Josef and Marie live in Slovakia. It is 4:00 in the afternoon. They are flying kites at the park.

3



Li-Peng lives in Singapore. The clock by his bed reads 11:00 p.m. He is sleeping.

D Listen and circle.

CD1
65

- | | | |
|--------------------------------------|-------------------|---------------------|
| 1. What time is it in Peru? | a. 9:00 a.m. | b. 12:30 p.m. |
| 2. Are Josef and Marie flying kites? | a. Yes, they are. | b. No, they aren't. |
| 3. What is Li-Peng doing? | a. eating lunch | b. sleeping |