

Interchange activities

interchange 1 PERSONALITY TYPES

A Pair work What is your personality type? Take turns using this quiz to interview each other. Then tally your answers and find out which category best describes you.

PERSONALITY QUIZ

- When you work on a big project, do you:**
 - try to finish it as quickly as possible?
 - work at it over a long period of time?
 - put it off as long as possible?
- When you do something, do you:**
 - try to do a first-class job so people will notice?
 - do it as well as you can without worrying too much about it?
 - do only what you must to get it done?
- When faced with a difficult challenge, do you:**
 - look forward to facing it?
 - worry about whether you can deal with it?
 - try to avoid it?
- Do you think the best way to get the most out of a day is to:**
 - do as many things as possible?
 - take your time to get things done?
 - do only those things you really have to?
- When something needs to be done, do you:**
 - decide to do it yourself?
 - work with others to get it done?
 - offer to do it only if no one else will?
- When something doesn't work out the way you want it to, do you:**
 - get angry with yourself and others?
 - think calmly about what to do next?
 - give up because it wasn't important anyway?
- When people take a long time to get something done, do you:**
 - get impatient and take over?
 - gently encourage them to get it done?
 - let them take their time?
- If you compare your goals with your friends' goals, do you:**
 - set out to do much better than they might?
 - hope that you and they can achieve similar things in life?
 - not care if they set higher goals for themselves than you do?
- When people are late for appointments, do you:**
 - get angry and stressed out?
 - remember that you are sometimes late, too?
 - not worry, because you are usually late, too?
- When people are talking to you, do you:**
 - not listen and think about other things?
 - listen and enter into the conversation?
 - let them take over and agree with everything they say?
- When people are expressing their ideas and opinions, do you:**
 - step in and give your own opinions?
 - listen and sometimes share your own ideas?
 - listen but not add your own opinions?

SCORING

Count how many A, B, and C answers your partner has. If there are . . .

- more A answers:** This person is a superachiever.
more B answers: This person is the cool and steady type.
more C answers: This person is the easygoing or carefree type.

B Group work Compare your scores. Then suggest four basic characteristics of each personality type.

“The superachiever is the kind of person who . . .
He or she can't stand it when . . .”

A Pair work Imagine you and your partner are professional party planners and have been hired to organize an important dinner party. Read about each person on the guest list.



Joanie Van Buren is 42, single, and the host of the party. Wealthy and sociable, she is an art museum volunteer. She has never been married and is rarely seen without her beloved dog.



John Pradesh is 28, single, and a computer software company owner. He was recently voted "Most Promising Entrepreneur" by *Tech* magazine. He puts his career ahead of dating and marriage.



Madge Mathers is 45, married, and a gossip columnist. She's nosy, talkative, and likes to dominate the conversation. She has a good sense of humor and is Joanie's oldest friend.



Buck Eubanks is 54, a widower, and an oil tycoon. This millionaire is bossy and straightforward. His companies have been accused of destroying land to make money.



Emma Smart is 30, single, and a nuclear physicist. She's currently working on top-secret military projects. She's shy, introverted, and recently broke up with her boyfriend of four years.



Pierre is 25, single, and Joanie's favorite chef. He's friendly and ambitious, but can be very moody. He's coming to the party to get celebrities and powerful business executives to invest in his new restaurant.



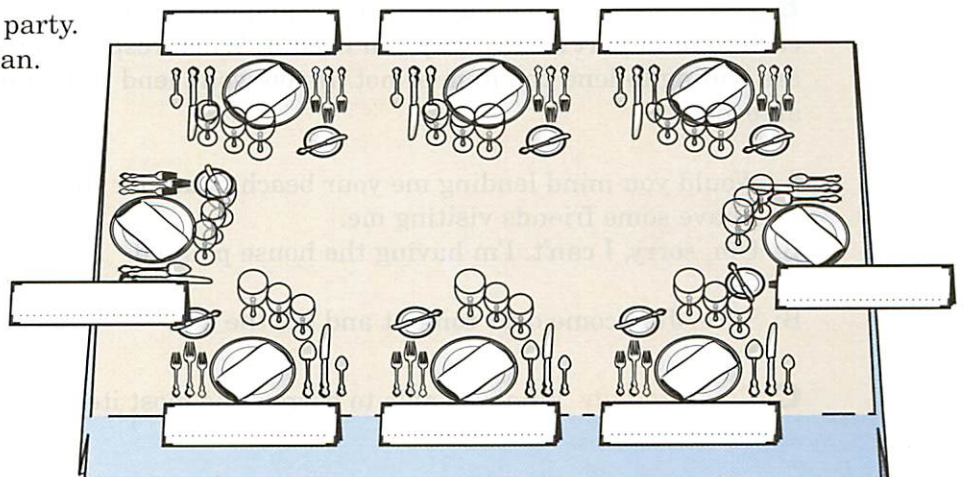
Sebastiana Di Matteo is 23, single, and a world-famous movie star. She's secretly engaged to her costar in her new movie, and is often followed by photographers.



Ralph Larson is 32, married, and a "green" politician. He's egotistical, outspoken, and tends to start arguments. He's running for public office on an environmental platform.

B Pair work Discuss the possible seating arrangements for the party. Then complete this seating plan.

- A: Let's seat Buck next to Pierre. Pierre is interested in finding investors for his new restaurant.
- B: It might be better to put Buck next to Joanie. He's a widower and she's single, so . . .



interchange 3**BORROWERS AND LENDERS**

A Imagine you own these items. Which ones would you be willing to lend to a friend? Which ones wouldn't you lend? Check (✓) a response for each item.

**mountain bike**

- wouldn't mind lending
 would rather not lend

**gold watch**

- wouldn't mind lending
 would rather not lend

**CDs**

- wouldn't mind lending
 would rather not lend

**sleeping bag**

- wouldn't mind lending
 would rather not lend

**beach house**

- wouldn't mind lending
 would rather not lend

**homework**

- wouldn't mind lending
 would rather not lend

**sports car**

- wouldn't mind lending
 would rather not lend

**cell phone**

- wouldn't mind lending
 would rather not lend

**leather jacket**

- wouldn't mind lending
 would rather not lend

B Class activity Go around the class and take turns asking to borrow each item in part A. Say why you need it. When responding, say if you are willing to lend the item or not. If you won't lend something, give an excuse.

A: Would you mind lending me your beach house for the weekend?

I have some friends visiting me.

B: Um, sorry, I can't. I'm having the house painted.

OR

B: Sure. Just come over tonight and get the key.

C Class activity Who was able to borrow the most items?

interchange 4 A DOUBLE ENDING

A Read the beginning and the two possible endings of this story.

Beginning

Ken Passell grew up in a small, working-class family in Detroit, Michigan. His father was an auto mechanic and his mother worked in a factory. When Ken was a child, he was very good with his hands.



Ending 1

The wedding was the biggest in the history of Los Angeles. After the ceremony, Ken and Cindy left on their private yacht for a honeymoon cruise to Baja, Mexico. When they return, they will live in their twenty-room mansion in Beverly Hills.



Ending 2

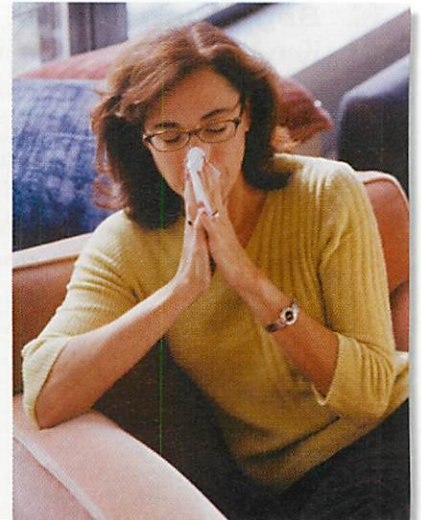
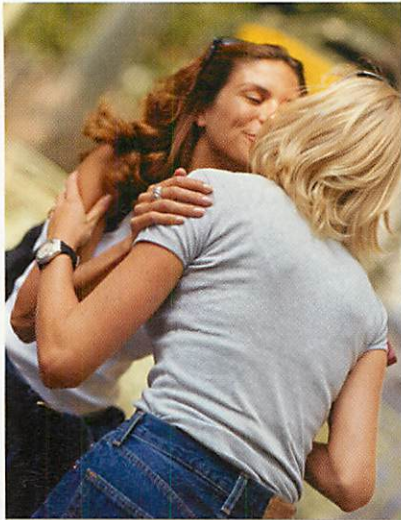
Ken and his wife, Cindy, were arrested in London last week. Police found more than \$250,000 in cash in their suitcase. The couple insists they are innocent. "I don't know how the money got in our luggage," Ken told the police.



B Pair work Choose one of the endings. What do you think happened during the middle part of the story? Discuss and take notes.

C Group work Tell your story to another pair. Answer any follow-up questions they have.

A These statements are generally true about cultural behavior in the United States. Check (✓) those that are true in your country.



Socializing

- 1. Women often kiss their friends on the cheek when they meet.
- 2. It's not acceptable to ask people how much money they earn.
- 3. People avoid asking each other about their religious beliefs.
- 4. When invited to someone's home, people usually arrive on time or a little late.
- 5. It's good to ask before bringing a friend or family member to a party at someone's home.
- 6. When someone moves into a new home, it's the custom to give a "housewarming" gift.
- 7. People usually call first before dropping by a friend's house.
- 8. When eating in a restaurant, friends either split the cost of the meal or take turns paying.

In public

- 9. It's OK to blow your nose quietly in public.
- 10. It's uncommon to bargain when you buy things in stores.

At work and school

- 11. In an office, people usually prefer to be called by their first name.
- 12. Students remain seated when the teacher enters the classroom.

Dating and marriage

- 13. Teenagers go out on dates.
- 14. People decide for themselves who they will marry.
- 15. When a couple gets married, the bride's family usually pays for the wedding and the reception.

B Pair work Compare your answers with a partner. For the statements you *didn't* check, why do you think these things are different in your country?

C Group work Can you think of an example where you (or someone you know) didn't follow the appropriate cultural behavior? What happened? Share your experiences.

A: On my last vacation, I tried to bargain for something in a store.

B: What happened?

A: I was told that the prices were fixed. It was a little embarrassing because . . .

Student A

A Look at this apartment. What's wrong with it? First, make a list of as many problems as you can find in each room.



B Pair work Compare your lists. What are the similarities and differences in the problems between your picture here and your partner's picture? Ask questions to find the differences.

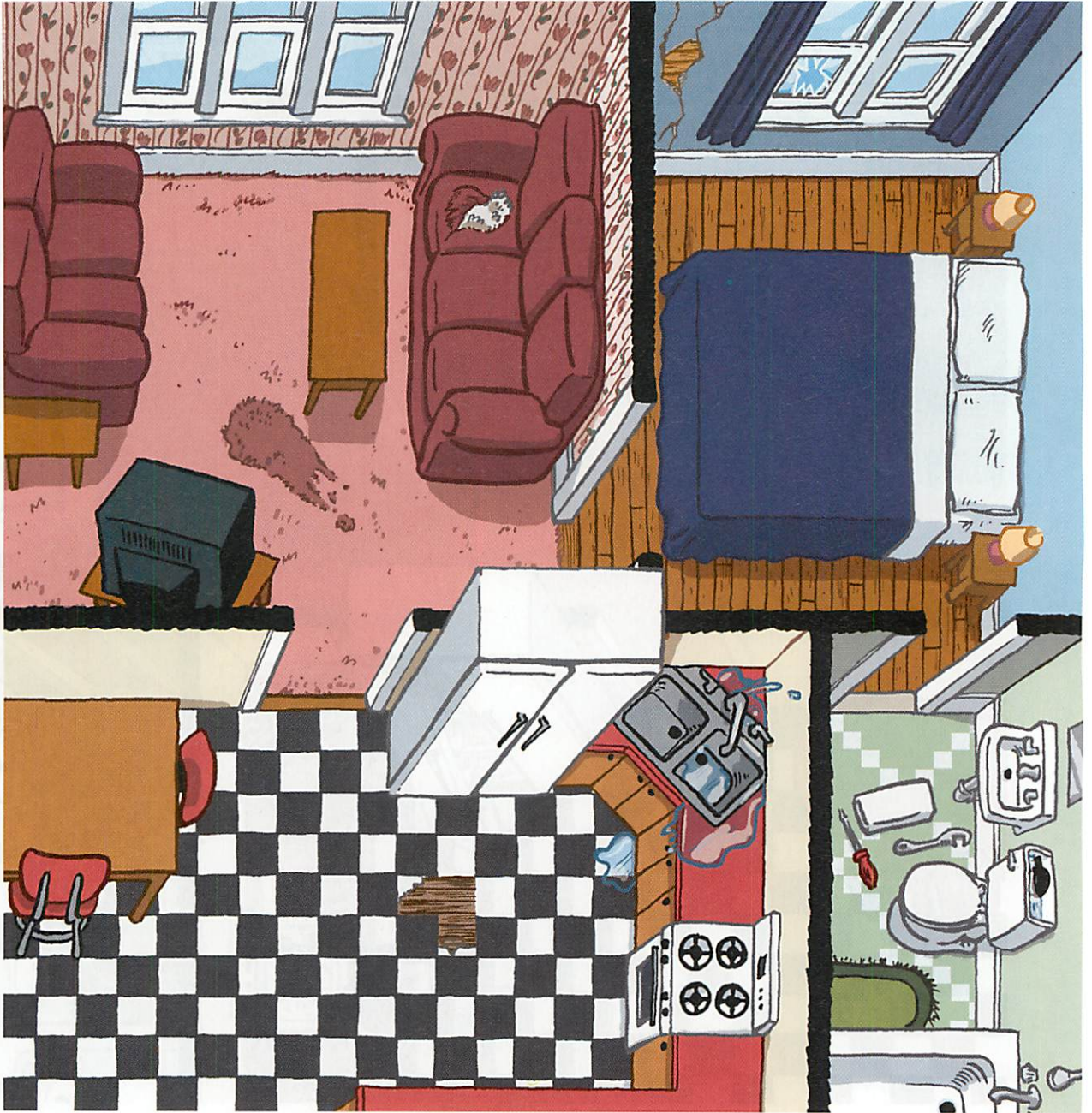
A: What's wrong in the living room?

B: Well, in my picture, the sofa has a hole in it. And the carpet . . .

A: Oh, really? In my picture, the sofa has a hole in it, but the carpet . . . , and the wallpaper . . .

Student B

A Look at this apartment. What's wrong with it? First, make a list of as many problems as you can find in each room.



B Pair work Compare your lists. What are the similarities and differences in the problems between your picture here and your partner's picture? Ask questions to find the differences.

A: What's wrong in the living room?

B: Well, in my picture, the sofa has a hole in it. And the carpet . . .

A: Oh, really? In my picture, the sofa has a hole in it, but the carpet . . . ,
and the wallpaper . . .

A Read about these issues. Which one would you most likely protest?

STARTING next month, local transit authorities will significantly raise the cost of all public transportation in and around your city.

A POPULAR soda company has been secretly using addictive and potentially harmful chemicals in its recipe to increase sales.

THE GOVERNMENT is negotiating the sale of portions of your country's biggest wildlife preserve to an oil-drilling company.

B Group work Find other students who chose the same issue. Then look at these methods of protest. Which are the most effective for the issue you chose? Complete the chart.



a demonstration



a sit-in



a petition

Method of protest	Very effective	Somewhat effective	Not effective
organize a rally or demonstration	<input type="checkbox"/>	<input type="checkbox"/>	<input type="checkbox"/>
start an e-mail writing campaign	<input type="checkbox"/>	<input type="checkbox"/>	<input type="checkbox"/>
stage a sit-in	<input type="checkbox"/>	<input type="checkbox"/>	<input type="checkbox"/>
boycott a product or service	<input type="checkbox"/>	<input type="checkbox"/>	<input type="checkbox"/>
circulate a petition	<input type="checkbox"/>	<input type="checkbox"/>	<input type="checkbox"/>
pay for advertisements on TV or the radio	<input type="checkbox"/>	<input type="checkbox"/>	<input type="checkbox"/>
write a letter to the editor of a newspaper	<input type="checkbox"/>	<input type="checkbox"/>	<input type="checkbox"/>
call your local government representative	<input type="checkbox"/>	<input type="checkbox"/>	<input type="checkbox"/>
distribute pamphlets about the issue	<input type="checkbox"/>	<input type="checkbox"/>	<input type="checkbox"/>
hold an awareness campaign in schools	<input type="checkbox"/>	<input type="checkbox"/>	<input type="checkbox"/>

Develop a strategy to make your voices heard using the above methods or your own ideas.

C Class activity How did you decide to deal with the issue? Present your group's strategy to the class.

A Complete this chart with information about yourself. Add one idea of your own.



two foreign languages I'd like to speak
two musical instruments I'd like to play
two dances I'd like to learn
two types of cuisine I'd like to learn how to cook
two evening courses I'd like to take
two sports I'd like to play
two skills that I'd like to improve
two

B Class activity Ask three classmates to help you choose between the things you wrote down in part A. Write your final choices in the chart.

Names:
foreign language
musical instrument
dance
cuisine
evening course
sport
skill
.....

A: I don't know if I'd rather speak Portuguese or Turkish. What do you think?

B: Hmm. If I were you, I'd learn Portuguese.

A: Why Portuguese and not Turkish?

B: Well, you already know Spanish, so Portuguese might be easier to learn.

C Class activity Who gave the best advice? Why? Tell the class.

interchange 9 **BECAUSE I SAID SO!**

A Pair work Read these comments made by parents. Why do you think they feel this way? Think of two arguments to support each point of view.



Our daughter wants to get her hair permed, but we won't let her. She's only 12!

Our son wants to get his computer upgraded, but we don't think it's necessary. We just bought it last year!

We won't let our daughter get her ears pierced. She has to wait until she's 18.

Regardless of the color, we refuse to let our kids get their hair dyed.

Our son wants to have his hair cut at an expensive salon. Why can't he just go to a regular barber?

If our daughter insists on having her nails done, she has to pay for it herself.



- A: Why do you think they won't let their daughter get her hair permed?
B: They probably think it's too expensive and that she has beautiful hair.
A: They may also feel that she . . .

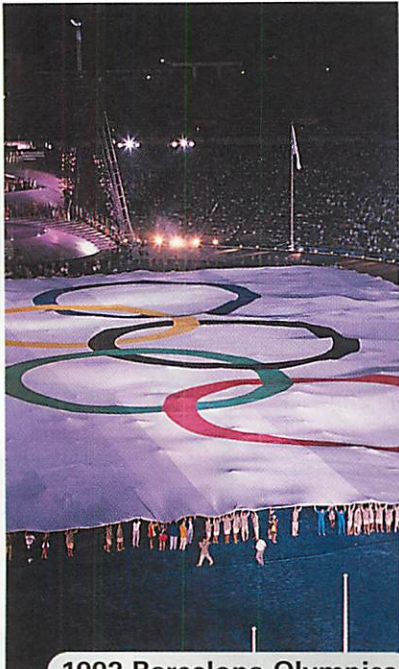
B Pair work Now put yourselves in the children's shoes. Talk about the parents' decisions, and think of two arguments their children might make.

- A: Why do you think the 12-year-old wants to get her hair permed?
B: She probably wants to keep up with her friends. It's important at that age to fit in.
A: That's true. And she might want to . . .

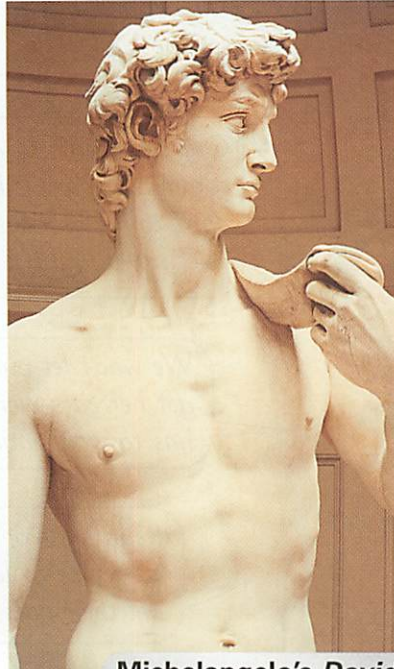
C Class activity Take a vote. Do you agree with the parents or the children? Why?

Student A

A Pair work Ask your partner these questions. Put a check (✓) if your partner gives the correct answer. (The correct answers are in **bold**.)



1992 Barcelona Olympics



Michelangelo's *David*



Marilyn Monroe

Test Your Knowledge

- 1. Was Julius Caesar emperor of Athens, **Rome**, or Constantinople?
- 2. What did Thomas Edison invent in 1879? Was it the television, the telephone, or the **lightbulb**?
- 3. In which year did Mexico gain its independence? Was it in 1721, **1821**, or 1921?
- 4. Where were the 1992 Olympics held? Were they in Los Angeles, **Barcelona**, or Tokyo?
- 5. When did World War I take place? Was it from 1898 to 1903, from 1911 to 1915, or **from 1914 to 1918**?
- 6. What sculptor made the famous statue of David? Was it Leonardo da Vinci, Auguste Bartholdi, or **Michelangelo**?
- 7. Who was the first human in space? Was it **Yuri Gagarin**, Alan Shepard, or John Glenn?
- 8. When were the first audio CDs put on the market? Was it in 1973, **1983**, or 1993?
- 9. What was the actress Marilyn Monroe's real name? Was it Mary Lou Dreyer, **Norma Jean Baker**, or Billy Jean Monkton?
- 10. Was Cleopatra the queen of **Egypt**, Rome, or Greece?

B Pair work Answer the questions your partner asks you. Then compare quizzes. Who has the most correct answers?

C Class activity Think of three more questions of your own. Can the rest of the class answer them?

interchange 11 IF THINGS WERE DIFFERENT . . .

A Choose eight people from the list. Write sentences describing things that they have or haven't done that you wish you could change.

my father/mother	my neighbor
my brother/sister	my co-worker
my spouse	my teacher
my boyfriend/girlfriend	my boss
my best friend	my country's leader

1. Our teacher should have warned us before she gave us that quiz.
2. My boss shouldn't have made me work so late before the holiday.

B Pair work Share your sentences with a partner. Take turns asking and answering questions about how things would have been different.

A: Our teacher should have warned us before she gave us that quiz.

B: Why? What would you have done if you had known about it?

A: If I'd known about it, I probably would have studied, and . . .



Student B

A Pair work Answer the questions your partner asks you.

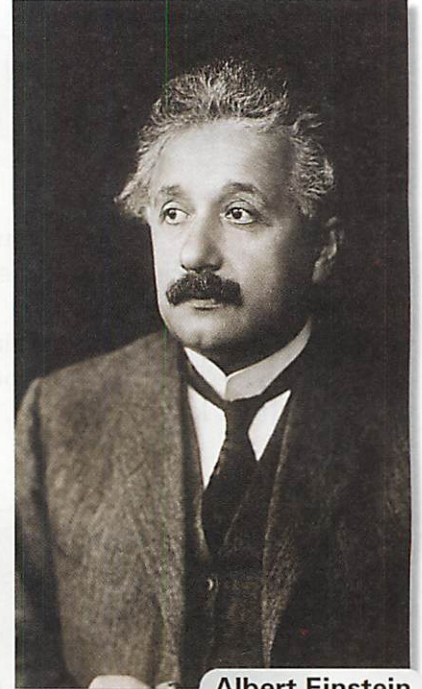
B Pair work Ask your partner these questions. Put a check (✓) if your partner gives the correct answer. (The correct answers are in **bold**.) Then compare quizzes. Who has the most correct answers?



Laika, first dog in space



Volkswagen "Beetle"



Albert Einstein

Test Your Knowledge

1. When did the Wright brothers make their first airplane flight? Was it in 1893, **1903**, or 1923?
2. What was the first living thing in space? Was it **a dog**, a monkey, or a mouse?
3. When did Walt Disney make his first cartoon movie? Was it in 1920, **1938**, or 1947?
4. In which century did the composer Mozart live? Was it the seventeenth, **eighteenth**, or nineteenth century?
5. Who was the novel *Frankenstein* written by? Was it Jane Austen, John Keats, or **Mary Shelley**?
6. Who discovered penicillin? Was it **Alexander Fleming**, Marie Curie, or Albert Einstein?
7. When was the first Volkswagen "Beetle" car built? Was it during the 1920s, **the 1930s**, or the 1940s?
8. Who used the first magnetic compass? Was it the Portuguese, **the Chinese**, or the Dutch?
9. When did the British return Hong Kong to China? Was it in 1995, 1996, or **1997**?
10. Was the theory of relativity created by **Albert Einstein**, Charles Darwin, or Isaac Newton?

C Class activity Think of three more questions of your own. Can the rest of the class answer them?

interchange 12 ENTREPRENEURS

A Group work Decide on an interesting business to open with your group – for example, a video arcade, a health club, a music store, or a café.

B Group work What do you have to do in order to succeed in the business you chose? Use these questions to identify at least five different factors.

What are the most important things you need in order to run the business?
How important is the name of the business?
Do you think the location of the business is important?
How important is advertising or having a gimmick?

C Group work Now design a plan for the business. Determine these factors:

name	special features
product or service	slogan
location	type of advertising
decor	other considerations

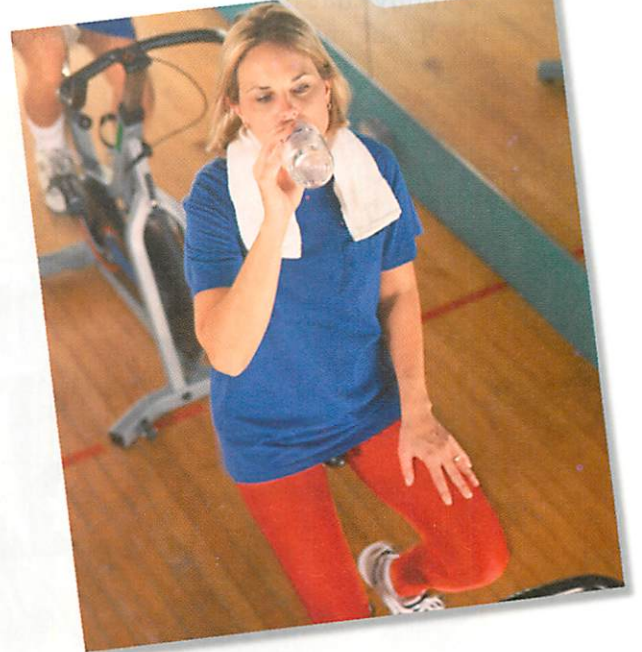
A: So, what are we going to call our café?

B: I think that before we choose a name, we need to decide on a theme.

C: I agree. Almost everything else will depend on . . .

D Class activity Present your plan to the class. Who has the best concept?

a health club



a café



a music store



interchange 13 PHOTO PLAYS

A Pair work Look at these pictures. What do you think might have happened in each situation? Talk about possibilities for each picture.

A: Maybe the woman thought of something funny that had happened earlier.

B: Or, she might not have understood . . .

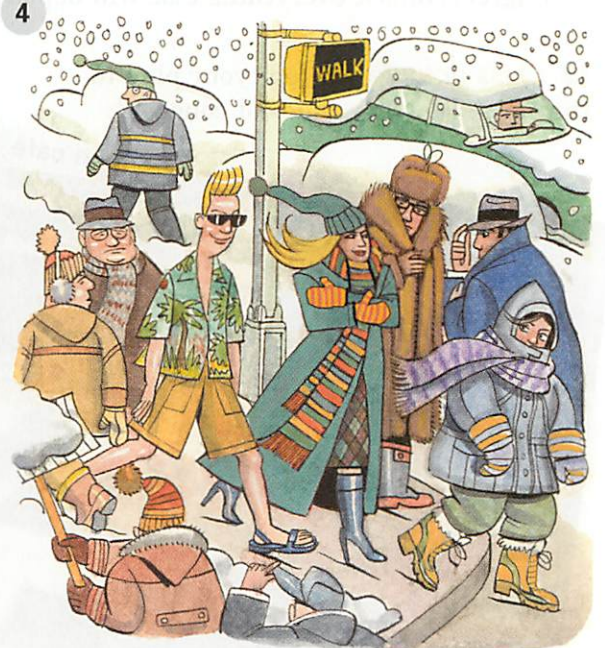
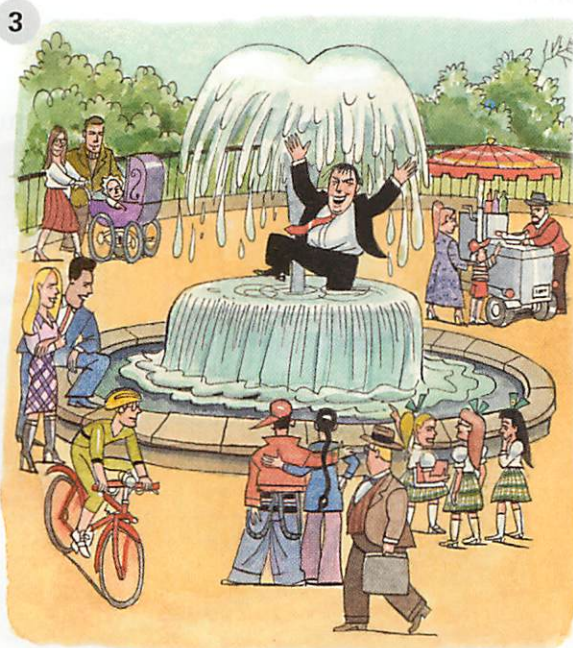
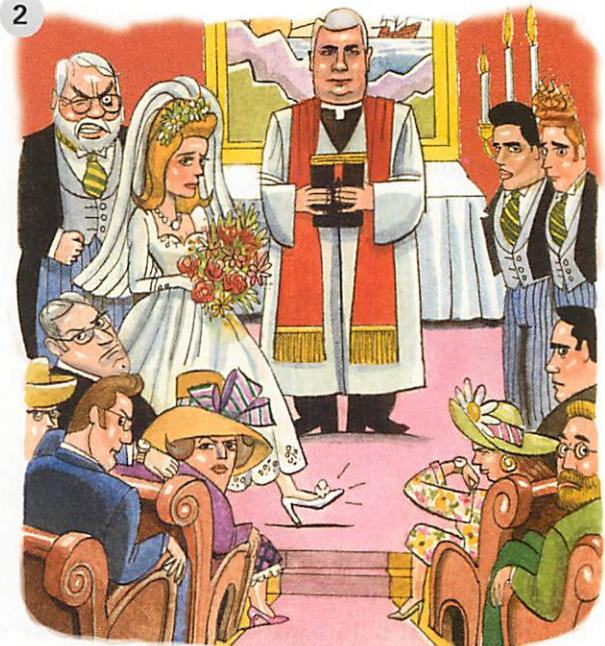
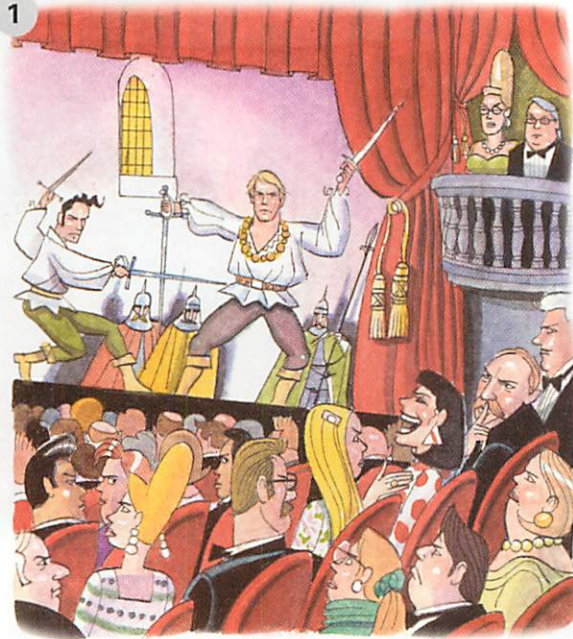
useful expressions

Maybe he/she was . . . when . . .

Or perhaps he/she was . . .

He/She may have . . . when . . .

He/She might have . . .



B Group work Agree on one interpretation of each situation and share it with the class. Be ready to answer any questions.

interchange 14 WHO MAKES IT HAPPEN?

A Group work Think about the people involved in making a movie. What does each person do?

screenwriter	composer	costume designer
director	special-effects designer	set designer
producer	stunt person	sound-effects technician
film editor	cinematographer	extra
actor	lighting technician	makeup artist

A: What does a screenwriter do?

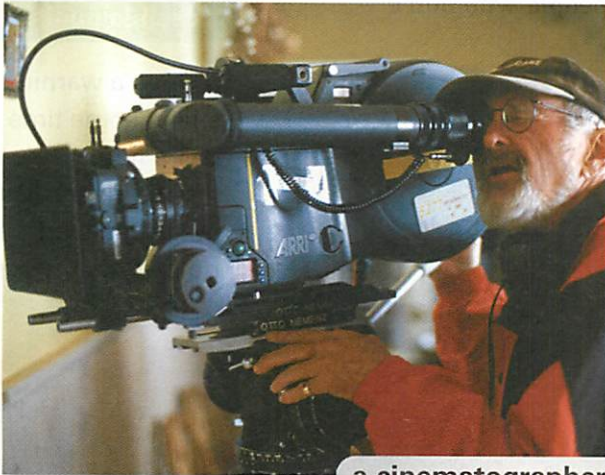
B: That's the person that writes the script for the movie. It can be an original script or an adaptation of a book or play.

B Group work Imagine you are going to make a movie. What kind of movie will it be? Decide what job each person in your group will do.

A: You should be the director because you're the best leader.

B: But I'm also creative, and I'd rather be the costume designer.

C Class activity Present your movie idea to the class. Explain how each person will contribute to the making of the film.



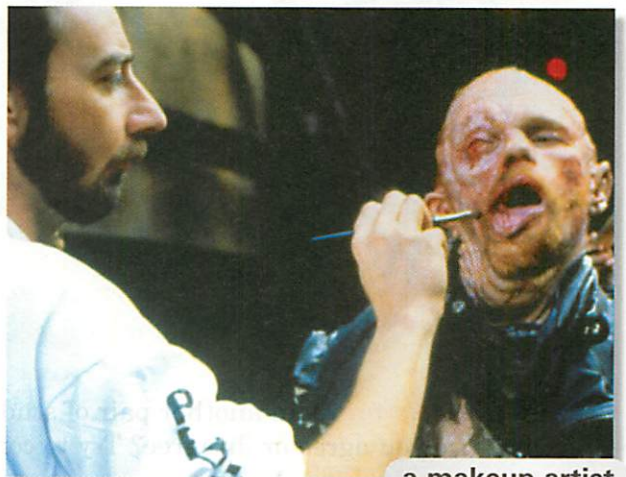
a cinematographer



a costume designer



a special-effects designer



a makeup artist

interchange 15 YOU BE THE JUDGE!

A Pair work What punishment (if any) is appropriate for each possible offense? Complete the chart.

Offense	Punishment
1. failing to clean up after a dog
2. crossing the street in dangerous places
3. leaving trash on public streets
4. using a cell phone while driving
5. buying pirated CDs and DVDs
6. driving without a seat belt
7. riding a motorcycle without a helmet
8. painting graffiti on public property
9. stealing from your company
10. shoplifting
11. hacking into a government computer
12. (your own idea)

A: What do you think should be done about people who don't clean up after their dog?
 B: They should be required to pay a fine.
 A: I don't agree. I think . . .

possible punishments

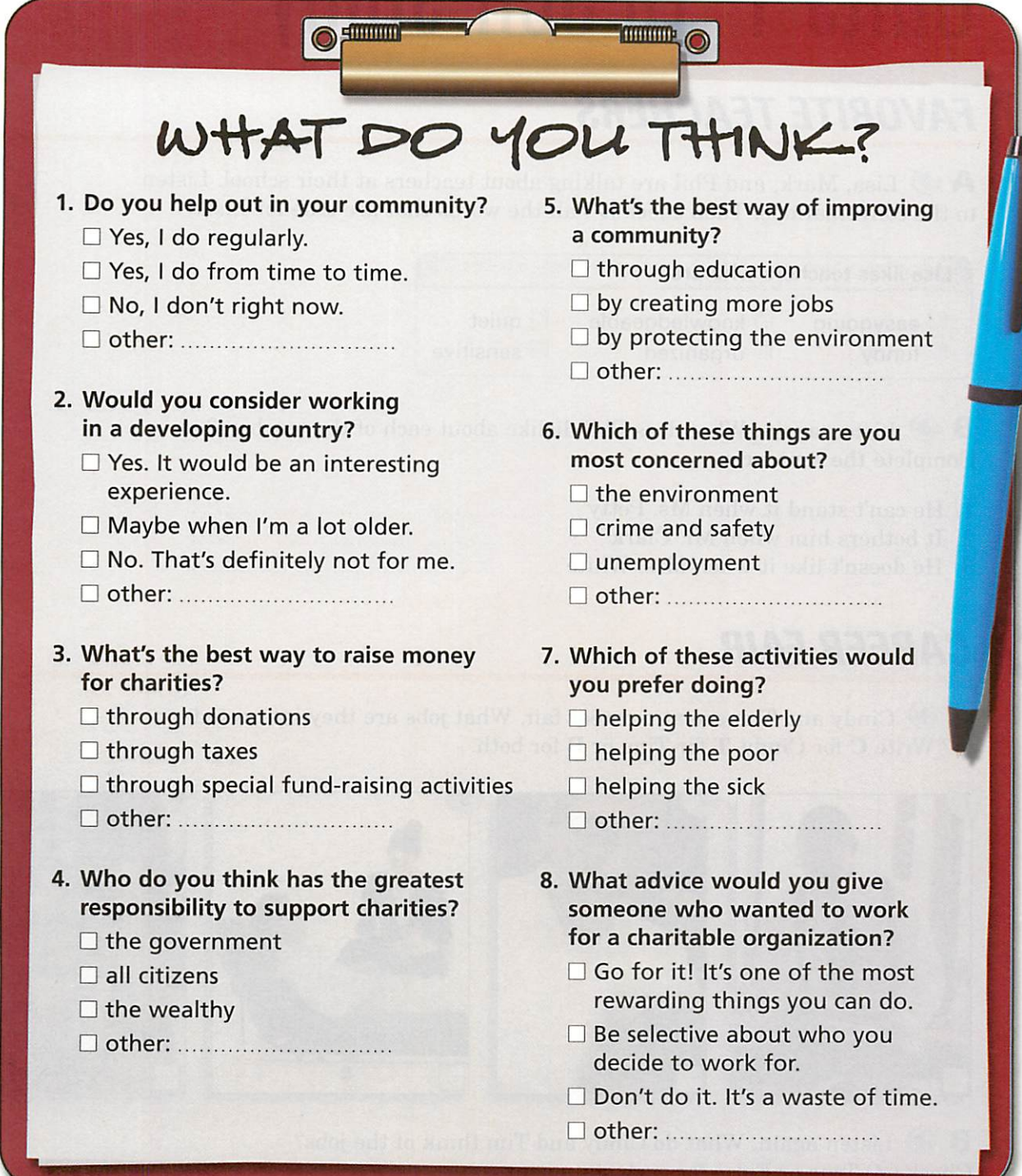
- receive a warning
- spend some time in jail
- pay a fine
- lose a driver's license
- get suspended
- do community service



B Group work Join another pair of students. Then compare and discuss your lists. Do you agree or disagree? Try to convince each other that you are right!

interchange 16 VIEWPOINTS

A Complete this survey with information about yourself.



WHAT DO YOU THINK?

- 1. Do you help out in your community?**
 - Yes, I do regularly.
 - Yes, I do from time to time.
 - No, I don't right now.
 - other:
- 2. Would you consider working in a developing country?**
 - Yes. It would be an interesting experience.
 - Maybe when I'm a lot older.
 - No. That's definitely not for me.
 - other:
- 3. What's the best way to raise money for charities?**
 - through donations
 - through taxes
 - through special fund-raising activities
 - other:
- 4. Who do you think has the greatest responsibility to support charities?**
 - the government
 - all citizens
 - the wealthy
 - other:
- 5. What's the best way of improving a community?**
 - through education
 - by creating more jobs
 - by protecting the environment
 - other:
- 6. Which of these things are you most concerned about?**
 - the environment
 - crime and safety
 - unemployment
 - other:
- 7. Which of these activities would you prefer doing?**
 - helping the elderly
 - helping the poor
 - helping the sick
 - other:
- 8. What advice would you give someone who wanted to work for a charitable organization?**
 - Go for it! It's one of the most rewarding things you can do.
 - Be selective about who you decide to work for.
 - Don't do it. It's a waste of time.
 - other:

B Pair work Compare your responses. Do you and your partner have similar viewpoints?

C Class activity Take a class poll. Which choice was the most popular for each question? Talk about any "other" responses people added.