

LESSON 11

Is this an apple?

No, it isn't. (isn't=is not)

It's **an orange**. (It's=It is)



1



a peach

2



a lemon

3



a melon

4



a banana

LESSON 12

Is that a car?

No, it isn't.

It's a bus.



a train



a plane



a boat

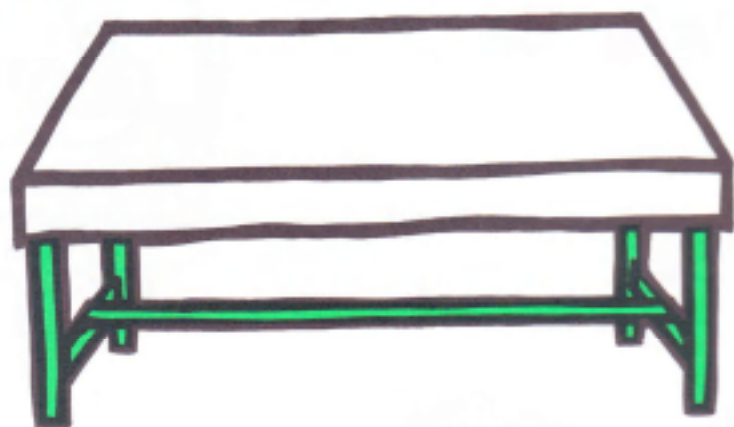


a bicycle

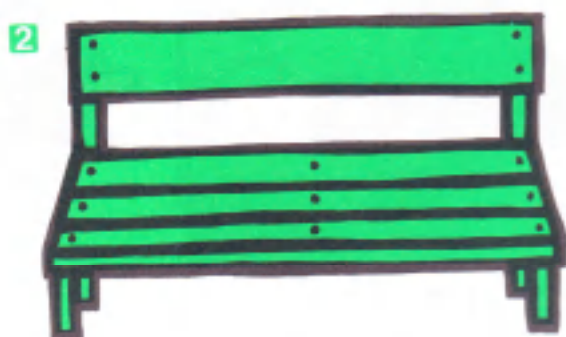
LESSON 13

Is this a desk or a table?

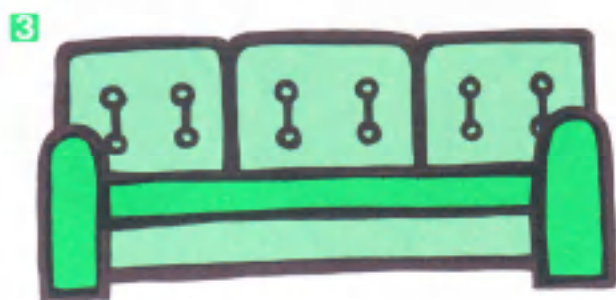
It's a table.



a chair



a bench



a sofa



a bed

LESSON 14

Is that a lion or a cat?

It's a lion.



1



a rabbit

2



a bear

3



a monkey

4



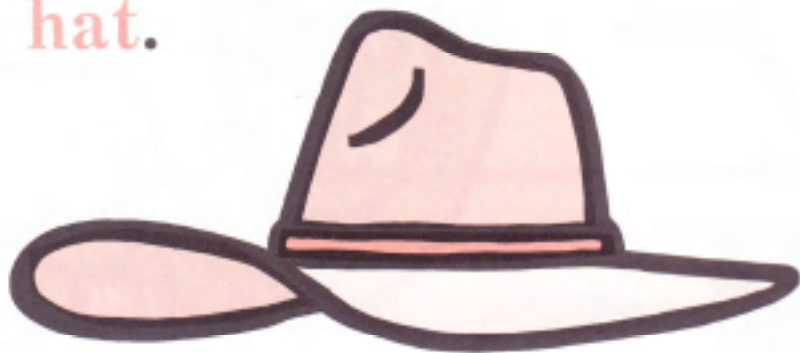
a wolf

LESSON 15

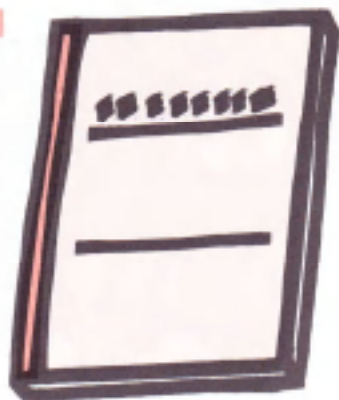
What's this?

(What's=What is)

It's **a hat.**



1



a notebook

2



a skirt

3



a letter

4



a bag