

Practice TOEIC Test 2

General Directions

This exam is designed to test how well you can understand and use the English language. The test takes approximately two hours to complete. It consists of seven separate parts, each with its own directions. Before you begin to work on a part, be certain that you understand the directions.

Some items will seem harder than other items. However, you should answer every one if possible. Remember, you are not penalized for guessing. If you are not able to answer every question, don't worry.

All your answers should be marked on the answer sheets found on pages 252-253. Remove or copy these sheets before the test begins. When you are marking an answer, fill in the circle corresponding to the letter that you have chosen. The space in the circle should be completely filled in so that the letter inside is not visible, as shown in the example below:

Look at the example

Q. Ms. Martindale _____ to her office this morning.

- (A) going
- (B) went
- (C) gone
- (D) go

(A) (B) (C) (D)

The sentence should correctly read "Ms. Martindale went to her office this morning." You should choose answer (B).

For each question, you may mark only one answer. If you decide to change your answer, you should erase your original answer completely.

Listening Comprehension

In this first section of the exam, your ability to understand spoken English will be tested. This section consists of four separate parts, each having its own directions.

Part I

Directions: For each item, there is a photograph in the book and four short sentences about it on the audio program. The sentences are NOT written out, so you must listen carefully.

You must choose the one sentence — (A), (B), (C), or (D) — that is the best description of what can be seen in the photograph. Then mark the letter that corresponds to the best answer on your answer sheet.

Look at the example



You see this photograph:

Listen to the four sentences:

- (A) (B) (C) (D)

Choice (C) — "He's waving to someone" — is the best description of what can be seen in the photograph.

1.



2.



3.



4.



GO ON TO THE NEXT PAGE 

5.

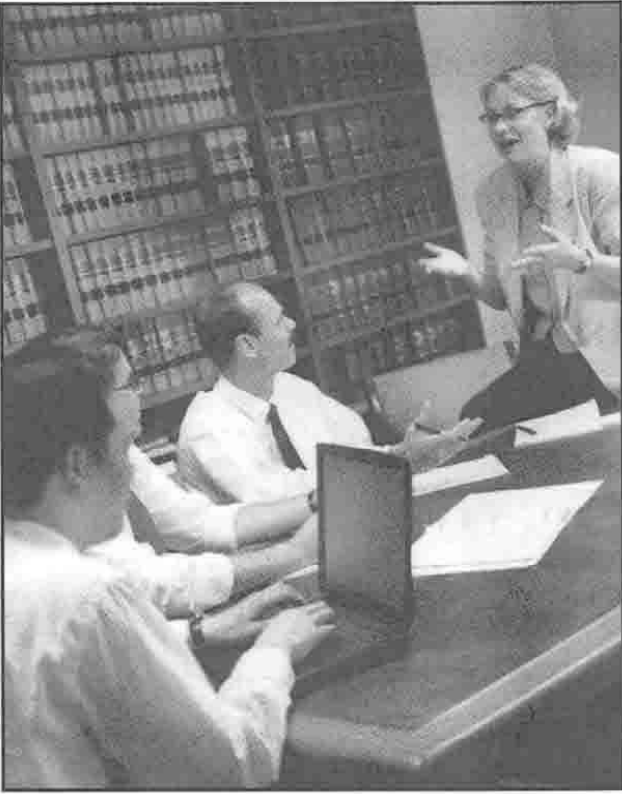


6.



Printed documents are strictly prohibited.

7.



8.



GO ON TO THE NEXT PAGE 

9.



10.



11.



12.

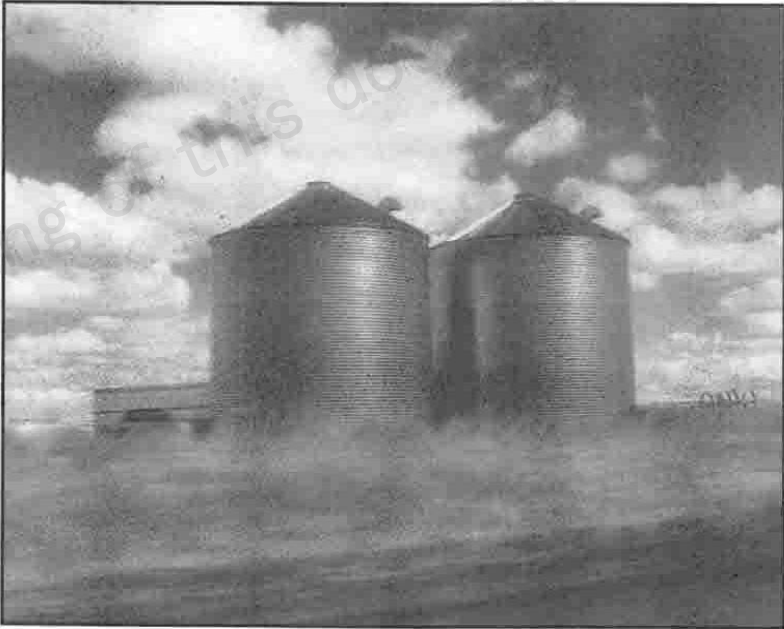


GO ON TO THE NEXT PAGE 

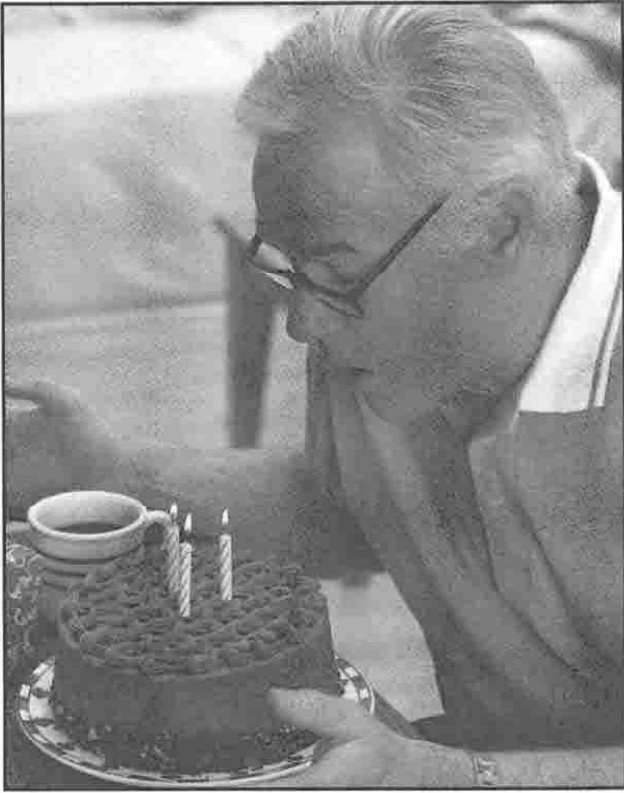
13.



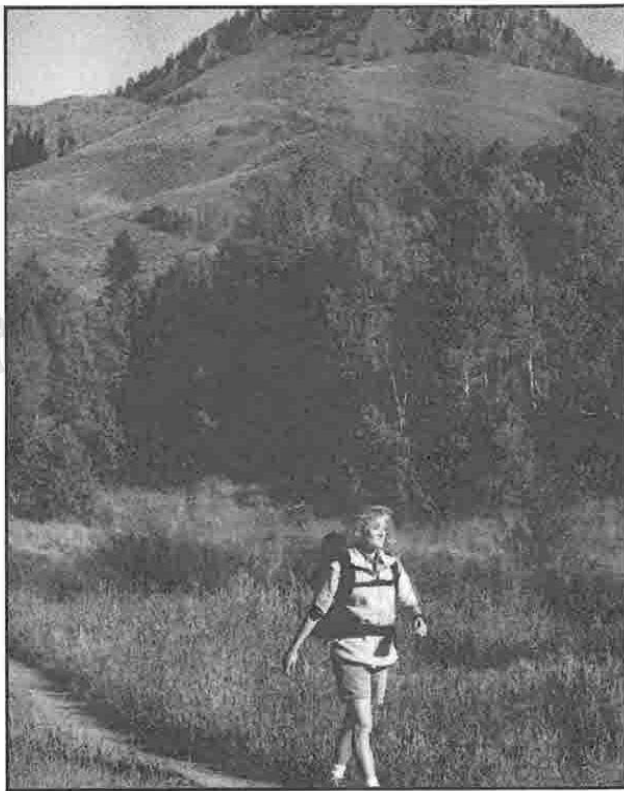
14.



15.



16.

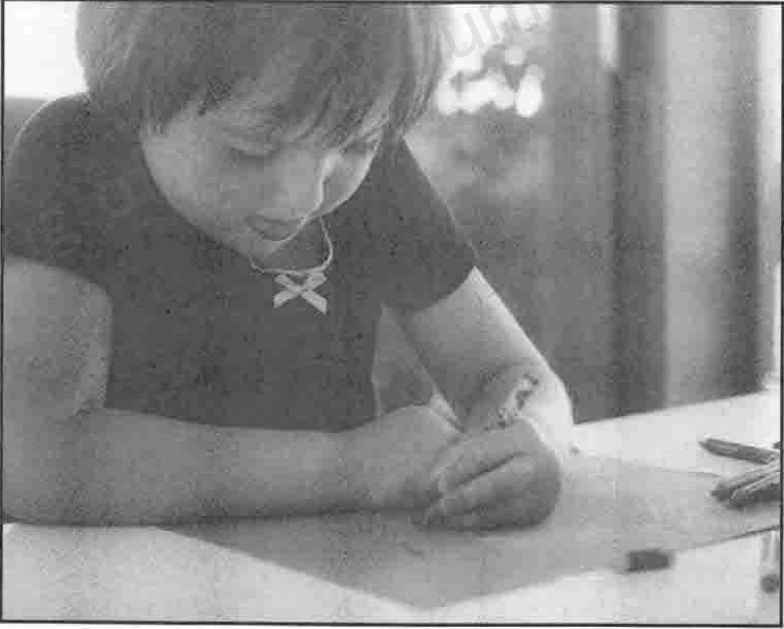


GO ON TO THE NEXT PAGE 

17.



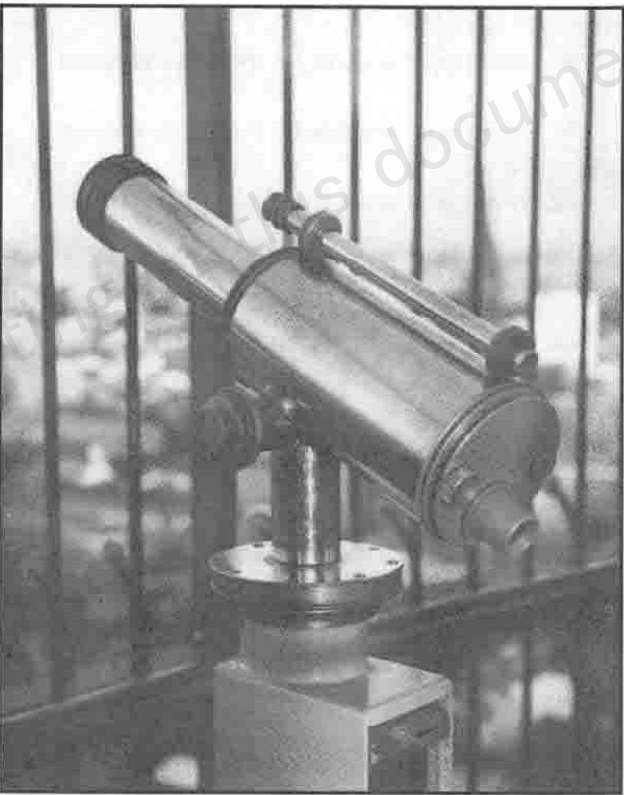
18.



19.



20.



GO ON TO THE NEXT PAGE

Directions: In this part of the test, you hear a question asked on the audio program. After that, you hear three possible responses to the question. Each question and response is given only once and is not written out in your book, so listen carefully. Then mark the letter that corresponds to the best response to the question on your answer sheet.

Listen to a sample

You hear:

You then hear:

- B C

Choice (A). "At the gymnasium." is the best response to the question "Where have you been, Steve?" You should mark (A) on your answer sheet.

21. Mark your answer on the answer sheet.
22. Mark your answer on the answer sheet.
23. Mark your answer on the answer sheet.
24. Mark your answer on the answer sheet.
25. Mark your answer on the answer sheet.
26. Mark your answer on the answer sheet.
27. Mark your answer on the answer sheet.
28. Mark your answer on the answer sheet.
29. Mark your answer on the answer sheet.
30. Mark your answer on the answer sheet.
31. Mark your answer on the answer sheet.
32. Mark your answer on the answer sheet.
33. Mark your answer on the answer sheet.
34. Mark your answer on the answer sheet.
35. Mark your answer on the answer sheet.
36. Mark your answer on the answer sheet.
37. Mark your answer on the answer sheet.
38. Mark your answer on the answer sheet.
39. Mark your answer on the answer sheet.
40. Mark your answer on the answer sheet.
41. Mark your answer on the answer sheet.
42. Mark your answer on the answer sheet.
43. Mark your answer on the answer sheet.
44. Mark your answer on the answer sheet.
45. Mark your answer on the answer sheet.
46. Mark your answer on the answer sheet.
47. Mark your answer on the answer sheet.
48. Mark your answer on the answer sheet.
49. Mark your answer on the answer sheet.
50. Mark your answer on the answer sheet.

Directions: In this part of the test, you hear short conversations involving two speakers. Each conversation is spoken only once and is not written out in the book, so listen carefully.

In your book, you read a question about each conversation. Following each question are four answer choices— (A), (B), (C), or (D). Mark the letter that corresponds to the best answer on your answer sheet.

Look at the example

You hear:

You read:

How will the man and his wife travel to the Grand Canyon?

- (A) By plane.
- (B) In a rental car.
- (C) By bus.
- (D) In a taxi.

(A) (B) (C) (D)

Choice (B), "In a rental car," is the best answer to the question, "How will the man and his wife travel to the Grand Canyon?" You should choose (B).

51. When will the awards ceremony be held?
- (A) Friday morning.
 - (B) Friday afternoon.
 - (C) Saturday morning.
 - (D) Saturday afternoon.
52. Where does this conversation probably take place?
- (A) In an office furniture store.
 - (B) In a grocery store.
 - (C) In a bookstore.
 - (D) In a computer store.
53. What does the man suggest the woman do?
- (A) Study Chinese on her own.
 - (B) Take several classes in Chinese before she leaves.
 - (C) Ask the company to hire an interpreter for her.
 - (D) Ask the company to provide a private teacher.
54. What are they probably discussing?
- (A) A photograph.
 - (B) The stock market.
 - (C) A painting.
 - (D) The walls of a room.
55. What did the man initially think about the information sheet?
- (A) That it would be more complicated.
 - (B) That it would be shorter.
 - (C) That it would not be available so soon.
 - (D) That it would be more helpful.
56. Who is Mr. Weisberg?
- (A) A farmer.
 - (B) A painter.
 - (C) A public relations expert.
 - (D) A journalist.

GO ON TO THE NEXT PAGE 

57. Why doesn't the woman accept the man's invitation?
(A) She doesn't enjoy skiing.
(B) She has to go to the office.
(C) She has some work to complete.
(D) She isn't feeling well.
58. Who has the notes now?
(A) George.
(B) Mr. Branch.
(C) Mr. Branch's assistant.
(D) The woman.
59. What can be inferred from this conversation?
(A) Last year was a very good year for the company.
(B) Ted was happy with the raise he got this year.
(C) Last year Ted made more money than this year.
(D) Ted did not get a big raise last year.
60. What is Mr. Sutcliff doing?
(A) Writing a check.
(B) Solving a specific problem.
(C) Getting a physical examination.
(D) Having his car repaired.
61. What will the man probably do next?
(A) Go to his son's school.
(B) Go straight home.
(C) Give a presentation.
(D) Meet with the woman.
62. Which of these does the woman NOT mention as being available at a special price?
(A) Toothpaste.
(B) Soup.
(C) Shampoo.
(D) Tuna fish.
63. What time is the plane now scheduled to leave?
(A) 12:30.
(B) 1:30.
(C) 2:00.
(D) 3:00.
64. What does the woman think will happen to the other driver?
(A) He will win the race.
(B) He will be stopped by the police.
(C) He will have an accident.
(D) He will lose his ticket.
65. Where does this conversation probably take place?
(A) At a ball game.
(B) At a camp ground.
(C) At a circus.
(D) At a restaurant.
66. What mistake did the woman make?
(A) She didn't send an invoice to Mr. van Meter.
(B) She didn't give the new clerk enough information.
(C) She didn't ask Mr. van Meter for a discount.
(D) She didn't send an e-mail to Mr. van Meter.
67. What does the woman imply?
(A) The expansion is being done without planning.
(B) The company will never agree to the plan.
(C) The zoning commission proceeds slowly.
(D) The expansion has already been approved.
68. How many copies does the man need?
(A) One.
(B) Four.
(C) Fifty.
(D) One hundred.

69. What kind of weather are they discussing?
- (A) Snowy.
 - (B) Windy.
 - (C) Cold.
 - (D) Sunny.
70. Why is the woman not interested in subscribing to the *Daily Gazette*?
- (A) She already gets another newspaper.
 - (B) She never has time to read a newspaper.
 - (C) It's more expensive than other newspapers.
 - (D) She isn't interested in the daily news.
71. What does the sign probably say?
- (A) "One way, do not enter."
 - (B) "Road closed for repairs"
 - (C) "Bank Street straight ahead."
 - (D) "Left turn only."
72. How long has the woman probably worked at her present job?
- (A) Two weeks.
 - (B) Four months.
 - (C) Eight months.
 - (D) One year.
73. What does the man NOT like about the apartment?
- (A) It's too dark.
 - (B) It doesn't have a good view.
 - (C) It is unfurnished.
 - (D) It's too small.
74. What is the problem?
- (A) The man completed the wrong form.
 - (B) The man's responses were too long.
 - (C) The man gave the wrong responses.
 - (D) The man should have printed his responses.
75. What is the woman suggesting that the man do with the shoe?
- (A) Try it on.
 - (B) Repair it.
 - (C) Polish it.
 - (D) Hit a nail with it.
76. Why is the Sunflower Café not open now?
- (A) It received a bad review in a magazine.
 - (B) It was not a popular place to eat.
 - (C) It suffered some damage in a fire.
 - (D) It had poor food and slow service.
77. What is the man mistaken about?
- (A) How long Joan will be gone.
 - (B) When Joan left.
 - (C) Where Joan went.
 - (D) Why Joan went to Milan.
78. What was damaged?
- (A) A paperweight.
 - (B) A lamp.
 - (C) An old piece of wood.
 - (D) An antique desk.
79. What does the woman suggest the man do?
- (A) Put the key in the cabinet.
 - (B) Look for the key in Mr. Okuda's desk.
 - (C) Leave the cabinet where it is.
 - (D) Call Mr. Okuda at home.
80. What does the man want the room to have?
- (A) A balcony.
 - (B) A convenient parking spot.
 - (C) A sitting room.
 - (D) A view of the ocean.

Part IV

Directions: During this part of the exam, there are a number of brief talks. These talks are not written out and are spoken only once, so you must listen carefully.

There are two or more questions about each of the talks. Following the questions are four possible answers — (A), (B), (C), and (D). You must decide which of these best answers the question and then mark the letter that corresponds to the best answer on your answer sheet

81. For how long has the Robot Trade Fair been held in Japan?
- (A) This is the first year.
 - (B) This is the third year.
 - (C) This is the fifteenth year.
 - (D) This is the thirtieth year.
82. The speaker did NOT mention that the following type of robot could be seen at the trade fair?
- (A) Robots used to build cars.
 - (B) Security-guard robots.
 - (C) Robots used to clean teeth.
 - (D) Toy animal robots.
83. What does the speaker say about the robotic device that may be used by surgeons?
- (A) It is capable of extremely precise work.
 - (B) It has been in use for several years.
 - (C) It is too expensive for most doctors to ever use.
 - (D) It requires many years of development before it can be used.
84. What characteristic of Quiet Springs bottled water does the speaker especially emphasize?
- (A) Its low price.
 - (B) Its large bottles.
 - (C) Its fresh taste.
 - (D) Its nutritional value.
85. What does the speaker imply about most other brands of bottled water?
- (A) They will soon contain vitamins too.
 - (B) They are not as pure.
 - (C) They are slightly less expensive.
 - (D) They are not available in two sizes.
86. Where does the water used in Quiet Springs come from?
- (A) From a mountaintop.
 - (B) From a farm.
 - (C) From a river.
 - (D) From a glacier.
87. What does the speaker suggest for people who want to save money?
- (A) Buying four boxes of half-liter bottles.
 - (B) Bottling water themselves.
 - (C) Taking vitamin pills rather than drinking bottled water.
 - (D) Buying four one-liter bottles in a pack.
88. Which of these San Francisco Denim Company plants will remain open?
- (A) The one in New Orleans, Louisiana.
 - (B) The one in Panama City, Panama.
 - (C) The one in Windsor, Ontario.
 - (D) The one in Guadalajara, Mexico.

89. What does the speaker say about the South San Francisco plant?
- (A) It was closed down several years ago.
 - (B) It produces clothing other than jeans.
 - (C) It is no longer the company's main plant.
 - (D) It has recently become more efficient.
90. What percentage of their income do consumers today spend on clothing?
- (A) One percent.
 - (B) Eight percent.
 - (C) Fourteen percent.
 - (D) Forty percent.
91. What is the main purpose of the talk?
- (A) To discuss Indian handicrafts and jewelry.
 - (B) To announce the new appointment of an Indian diplomat.
 - (C) To provide information about an upcoming event at the MiraVista Hotel.
 - (D) To describe the cuisine of India.
92. Who is Mr. Sohan Bhatt?
- (A) A chef from India.
 - (B) A spokesperson for the hotel.
 - (C) A representative of the Indian Embassy.
 - (D) A jewelry maker from India.
93. Where will the opening ceremony of the food festival take place?
- (A) At the Indian Embassy.
 - (B) In the Wellington Restaurant.
 - (C) In the MiraVista Gallery.
 - (D) In the Somerset Banquet Hall.
94. Which of the following would be the best title for this talk?
- (A) Product Recalls: What Makes Them Successful?
 - (B) Risky Toys for Children.
 - (C) Why Companies Should Avoid Product Recalls.
 - (D) How to Successfully Market a Motorcycle.
95. For which of these products would a recall probably be most successful?
- (A) A toy airplane with sharp edges that may injure children.
 - (B) A microwave oven that doesn't heat food properly.
 - (C) A big-screen television with a faulty sound system.
 - (D) A car with tires that may fail at high speeds.
96. Which of the following does Warren Holt cancel in this message?
- (A) His dinner with Robert Panella.
 - (B) His trip to Miami.
 - (C) His meeting with Ms. Watson.
 - (D) His breakfast with Robert Panella.
97. Which of the following does Warren Holt ask Robert Panella to do?
- (A) Meet him at the airport.
 - (B) Confirm a meeting.
 - (C) Reserve a rental car for him.
 - (D) Return his phone call.
98. How long were Kevin and Sean Doyle missing?
- (A) Two days.
 - (B) Three days.
 - (C) Eight days.
 - (D) Ten days.

99. Where were Kevin and Doyle found?

- (A) In a campground.
- (B) In an abandoned gold mine.
- (C) In a small cabin.
- (D) In a hollow in the woods.

100. The two boys were probably NOT suffering from which of the following?

- (A) Hunger.
- (B) Thirst.
- (C) Exhaustion.
- (D) Cold.

**THIS IS THE END OF THE LISTENING COMPREHENSION SECTION OF THE TEST.
GO ON TO THE READING COMPREHENSION SECTION.**

Printing of this document are strictly prohibited.

YOU HAVE ONE HOUR AND FIFTEEN MINUTES IN WHICH TO COMPLETE
THE LAST THREE PARTS OF THE TEST.

Reading Comprehension

In this second section of the exam, your ability to understand written English will be tested. This section consists of three separate parts, each with its own directions.

Part V

Directions: This part of the test consists of incomplete sentences. Beneath each sentence, four words or phrases appear. Select the answer choice — (A), (B), (C), or (D) — that best completes the sentence. Then mark the letter that corresponds to the best answer on your answer sheet.

Example

Mr. Morales read over the contract with great _____.

- (A) interesting
- (B) interest
- (C) interested
- (D) interestingly

This sentence should correctly read "Mr. Morales read over the contract with great interest." Therefore, the best answer is (B).

(A) (C) (D)

101. Dominique Lamarque, the firm's information technology officer, has developed a new computer program that should _____ the employee's work loads.
- (A) lighter
 - (B) lightening
 - (C) lighten
 - (D) light
102. Liquid assets are _____ converted into cash.
- (A) easy
 - (B) easily
 - (C) easier
 - (D) ease
103. Because the utility bills had not been paid for three months, the electricity was cut _____.
- (A) off
 - (B) out
 - (C) down
 - (D) into
104. The value of Crosswell Corporation's stock has _____ slightly since January.
- (A) falling
 - (B) fell
 - (C) fall
 - (D) fallen
105. Igor Sikorski was the first person _____ a modern helicopter.
- (A) to develop
 - (B) the development of
 - (C) developing
 - (D) developed
106. The board voted to raise prices in small _____.
- (A) implements
 - (B) incidents
 - (C) increments
 - (D) indications
107. My brother invited me to attend the tennis matches with him on Saturday, but I would _____ stay home and watch them on television.
- (A) prefer
 - (B) rather
 - (C) want
 - (D) like
108. Most employees respond with _____ when they are given the freedom to develop their own work methods.
- (A) enthusiastic
 - (B) enthusiast
 - (C) enthusiastically
 - (D) enthusiasrn
109. Even _____ the bid arrived after the deadline, it will still be considered.
- (A) though
 - (B) when
 - (C) so
 - (D) although
110. The two _____ systems of accounting in use today are the cash system and the accrual system.
- (A) more popular
 - (B) popularity
 - (C) most popular
 - (D) popularized

111. Paris is famous for the many sidewalk cafés that _____ its boulevards.
- (A) line
 - (B) along
 - (C) align
 - (D) beside
112. The first buildings to be _____ were mainly factories.
- (A) air conditioner
 - (B) air conditioning
 - (C) air conditioned
 - (D) air condition
113. I hope that all of you will _____ Ms. Mato your undivided attention for the next half hour.
- (A) take
 - (B) pay
 - (C) give
 - (D) turn
114. The *Brunswick Explorer* is a submersible robotic vehicle designed to search for mineral deposits far _____ the surface of the sea.
- (A) between
 - (B) below
 - (C) behind
 - (D) beyond
115. The economy has been sluggish for the last few quarters, but several signs _____ to a speedy recovery.
- (A) indicate
 - (B) show
 - (C) demonstrate
 - (D) point
116. _____ business experts call the "point of sale" is the location in a retail establishment where customers actually make their purchases.
- (A) What
 - (B) That
 - (C) How
 - (D) Some
117. Because his partner had to go to Sydney, Mr. Zazueta had to finish work on the advertising campaign on _____.
- (A) his own
 - (B) himself
 - (C) alone
 - (D) solo
118. In the _____ 1940's, television first began to seriously compete with radio for audiences and advertising.
- (A) high
 - (B) late
 - (C) deep
 - (D) last
119. Ms. Csupo said that she would return to work at least _____ Wednesday, but she didn't come back until Friday.
- (A) at
 - (B) until
 - (C) in
 - (D) by
120. Farmers in the Nile Delta of Egypt _____ cotton, wheat, corn, and rice.
- (A) grow up
 - (B) raise
 - (C) bring up
 - (D) rise

121. The lecturer at the Cultural Center _____ about the Maori music and art of New Zealand.
- (A) told
 - (B) discussed
 - (C) talked
 - (D) mentioned
122. During the flu season, temporary workers were needed to _____ for permanent workers who were out sick.
- (A) fill up
 - (B) fill
 - (C) fill out
 - (D) fill in
123. The council will contact you as _____ as they have made a decision.
- (A) long
 - (B) soon
 - (C) much
 - (D) far
124. Mr. Lupescu decided that he was not _____ to life in a small town, and so he returned to the capital.
- (A) suited
 - (B) suitable
 - (C) suitor
 - (D) suiting
125. Most, _____ not all, of this report was written by Ms. Cribari.
- (A) of
 - (B) if
 - (C) and
 - (D) or
126. Many of the women in the office spent _____ lunch hour discussing the company's latest proposals.
- (A) her
 - (B) their
 - (C) hers
 - (D) theirs
127. Rooms at the Aqua Bay Resort are considerably more expensive during the _____ season.
- (A) tip
 - (B) summit
 - (C) peak
 - (D) higher
128. Our expert service staff will do anything they _____ to insure that you are satisfied with your purchase.
- (A) ought
 - (B) will
 - (C) have
 - (D) can
129. We were told that we could complete this assignment _____ we pleased.
- (A) however
 - (B) anyhow
 - (C) no matter
 - (D) whatever
130. The _____ of this investigation is to determine if anyone in this department was responsible for the accident that occurred.
- (A) purpose
 - (B) explanation
 - (C) account
 - (D) reason

131. Although training programs for employees are quite expensive, in the long _____, they are good investments in human capital.
- (A) terms
 - (B) run
 - (C) period
 - (D) time
132. With the arrest of the third suspect, the police announced that the case was _____.
- (A) shut
 - (B) closed
 - (C) full
 - (D) up
133. Please sign the last page of the rental agreement and _____ all the other pages.
- (A) initial
 - (B) initiate
 - (C) initialize
 - (D) initiation
134. Last weekend, Barclay Department Stores reduced prices so much that customers were practically breaking _____ the doors to get to the bargains.
- (A) out
 - (B) up
 - (C) down
 - (D) into
135. After his meeting in Geneva, Mr. Yee decided to _____ skiing in the Swiss Alps.
- (A) play
 - (B) do
 - (C) go
 - (D) get
136. Michael Barnes and I have known _____ since we were in high school.
- (A) one other
 - (B) another one
 - (C) the two of us
 - (D) each other
137. _____ of their final destination, Comet Express first ships all packages to St. Louis.
- (A) Regardless
 - (B) Regarding
 - (C) Regards
 - (D) Disregarded
138. When the company raised prices, new price _____ had to be put on all merchandise.
- (A) labels
 - (B) tickets
 - (C) blanks
 - (D) tags
139. The maintenance crew soon had the high pressure pump back in perfect _____ order.
- (A) work
 - (B) worked
 - (C) working
 - (D) worker
140. After he won the award, Mr. Galves was grinning from _____.
- (A) eye to eye
 - (B) mouth to mouth
 - (C) head to toe
 - (D) ear to ear

GO ON TO THE NEXT PART.

Part VI

Directions: In each sentence in this section, four words or phrases are underlined and marked (A), (B), (C), and (D). You must choose the *one* underlined expression that must be rewritten in order to form a correct sentence. Then mark the letter that corresponds to the best answer on your answer sheet.

Example

Every workers in this department will receive a bonus
A B C
in September.
D

- B C D

Choice (A), *workers*, is incorrectly used in this sentence. The correct sentence should read "Every worker in this department will receive a bonus in September." You should mark letter (A).

As soon as you are ready, you can begin working on this section.

141. An important step in any decision-making process
A B
is the gathering of informations.
C D
142. Many individuals have done contributions to the
A B
recent success of the company.
C D
143. Neither my plan or the one that was proposed by
A B C
Ms. Paros was accepted.
D
144. Ms. Woodford, the sales manager, suggested it
A B
that the entire sales staff attend the seminar.
C D
145. Today there are a number of software programs that
A B
can be used to creating attention-getting graphics
C
for business presentations.
D
146. There are not lifeguards on duty at Half Moon Beach
A B
between 7 p.m. and 9 a.m.
C D
147. This new type of film will not be available at
A B
stores retail until after January 1.
C D
148. A framed photograph of some beautiful mountains
A B
were hung behind Ms. Hegi's desk.
C D
149. Hong Kong's film industry is the three most prolific
A B C
in the world.
D
150. The bill for dinner was twice more than I thought
A B C
it would be.
D

151. The north tower of the skyscraper was connected together to the south tower by a walkway at the tenth floor.
A B C D
152. The Saxon Motor Works, which produces only two thousand automobiles a year, practically builds each vehicle by the hand.
A B C D
153. Supertankers are too much large to fit through the locks of the Panama Canal.
A B C D
154. An accountant must analyze a firm's transactions and decide how to classify it.
A B C D
155. The gross national product is one commonly-used measurement of a nation's wealthy.
A B C D
156. Although the wholesale price of coffee has dropped out, the price of a cup of coffee at a coffee shop does not seem to have been affected.
A B C D
157. After she spoke to the police, the journalist asked us to give ours version of the incident.
A B C D
158. Mr. Samuels always complains about the service on Central Airlines, but I find it no worst than that on most other airlines.
A B C D
159. It was suggested that a conference call is substituted for a face-to-face meeting in Stockholm in order to save the firm some money.
A B C D
160. Flex-time, a non-traditional method of scheduling workers, was original developed in Germany.
A B C D

GO ON TO THE NEXT PART.

Part VII

Directions: Questions in this part of the test are based on a wide range of reading materials, including articles, letters, advertisements, and notices. After reading the passage, decide which of the four choices — (A), (B), (C), or (D) — best answers the question, and then mark the letter that corresponds to the best answer on your answer sheet. All answers should be based on what is stated in or on what can be inferred from the readings.

Now read the following example

La Plata Dinner Theater announces the opening of *Life on the River*, a musical play based on a book by Mark Twain. Dinner is served from 6:30 to 8:00, and the performance begins at 8:30 every evening.

What is opening?

- (A) A bookstore
- (B) An art exhibit
- (C) A musical play
- (D) A new restaurant

(A)

(B)

(D)

The reading states that *Life on the River* is a musical play that is opening at La Plata Dinner Theater. You should choose (C).

Questions 161 through 163 refer to the following announcement:

21st Annual Children's Book Fair

Vienna, Austria
City of Vienna Exhibition Center
May 19-23 10 AM - 8 PM daily

The European Book Foundation will open the doors of the 21st annual children's book fair from Thursday May 19 through Monday May 23. More than 200 exhibitors will take part, including the most important bookstores and publishing houses devoted to children's literature and education. For the first two days, from 10 to 2, the fair is open exclusively to groups of pupils on official school excursions. After 2 on these days, and from the 21st to the 23rd, it is open to all interested members of the public. There will be workshops on literature, art, and computing as well as dancing, music, and puppet shows.

This year, for the first time, Lorenzo the Magnificent will be performing magic on Saturday and Sunday. Meet-the-author sessions and book-signings take place daily.

161. At which of these times may only official school groups attend the fair?
- (A) Thursday at 3 p.m.
 - (B) Friday at 11 a.m.
 - (C) Friday at 5 p.m.
 - (D) Saturday at 10 a.m.
162. Who may attend the fair May 21 to May 23?
- (A) Only members of the European Book Foundation
 - (B) Only children and their parents
 - (C) Anyone who wants to
 - (D) Only publishers and bookstore owners
163. What is taking place at the book fair for the first time this year?
- (A) Magic shows by Lorenzo the Magnificent
 - (B) Computer workshops
 - (C) Sessions at which books are signed by the author
 - (D) Puppet shows

GO ON TO THE NEXT PAGE 

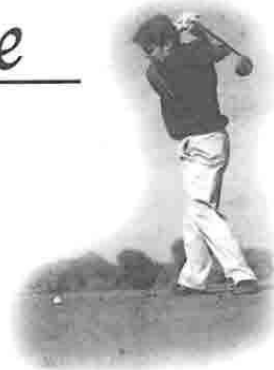
Aaron Springs Golf Course

18 holes

(408) 474-1937

Santa Lucia Highway

Open to the public



Whether golf courses are listed alphabetically or by quality of play, Aaron Springs is at the top! The quality of the golf holes and the dramatic beauty of the parkland setting gets better as play continues. The last three holes offer stunning views of the Pacific Ocean. In fact, the par 4, 204 yard 17th hole was featured in *Golf World Magazine* in their list of the most spectacular holes on the West Coast when the course opened three years ago. This course can truly be enjoyed by golfers of any level, assuming the golfer is a skillful putter, because the greens are quite challenging. Greens/cart fees:

\$65 Mon. - Wed., \$75 Thurs. and Fri. and \$85 Sat. and Sun.

164. What is the purpose of this advertisement?

- (A) To interest golfers in playing at Aaron Springs
- (B) To urge readers to join a club
- (C) To get people to subscribe to *Golf World Magazine*
- (D) To sell golf clubs to golfers

166. On which of the following days are the fees highest?

- (A) Tuesday
- (B) Thursday
- (C) Friday
- (D) Sunday

165. What does the advertisement suggest about the 17th hole?

- (A) It is one of the most difficult holes on any West Coast golf course.
- (B) It is particularly beautiful.
- (C) It is the longest hole at Aaron Springs.
- (D) It does not provide a view of the Pacific Ocean.

Questions 167-169 are based on the following memo:



Interoffice Memo

TO: All Employees

FROM: John Kendall, Managing Director

I am happy to announce that, as the next step in our on-going water and energy conservation program, we have chosen Ms. Anna Fiori, currently serving as assistant financial officer, as our new energy management coordinator.

Ms. Fiori will be exploring areas in which we can save energy and boost our efficiency.

These areas include:

- The operation of our manufacturing processes
- Our lighting, heating/air conditioning, plumbing, and landscaping practices
- Our purchasing practices

Please e-mail or call Ms. Fiori to communicate any ideas you may have for saving energy or improving efficiency here at Ventura Enterprises. Also, contact her if you believe that any changes create problems for you, your colleagues, or your department. She'll be announcing accomplishments and successes in our weekly newsletter.

167. What is John Kendall's purpose in writing this memo?
- (A) To notify workers about a new program
 - (B) To announce the beginning of a newsletter
 - (C) To discuss the opening of a new plant
 - (D) To announce that a position has been filled

169. According to the memo, how will employees be informed of changes made by Ms. Fiori?
- (A) In a newsletter
 - (B) By e-mail
 - (C) By telephone
 - (D) In a memo

168. Which of the following would probably NOT be part of Ms. Fiori's duties?
- (A) Making sure water is not wasted when lawns are being watered
 - (B) Trying to buy the most energy-efficient equipment
 - (C) Saving money on office supplies
 - (D) Looking for ways to save energy in the manufacturing of products

GO ON TO THE NEXT PAGE 

Questions 170 and 171 are based on the following announcement:

Pan-Pacific Airline's popular low-cost flights from Seattle-Tacoma to Tokyo and from Tokyo to Seoul are airborne once again. Four years ago, after Pan-Pacific acquired ailing Crown International Airlines, it was bound by an agreement made by Crown International not to fly from Sea-Tac to Tokyo. However, the path for the renewal of service was cleared by a liberalized aviation agreement signed earlier this year by the U.S. and Japanese governments.

170. What is the main purpose of this announcement?
- (A) To discuss the merger of two airlines
 - (B) To describe Crown International Airlines new image
 - (C) To report the restoration of a discontinued air route
 - (D) To announce direct service between Seattle and Seoul
171. According to the announcement, what allowed Pan-Pacific to fly from Seattle to Tokyo?
- (A) An agreement between U.S. and Japanese government agencies
 - (B) A growing demand by the public
 - (C) The acquisition of routes from Crown International Airways
 - (D) An agreement between Japanese and U.S. airlines

Questions 172 to 175 are based on the following notice:

You must rinse off all surfaces of your

2 fountain, including the polished decorative stones (if
provided with your unit) before using the fountain for
4 the first time. Any dirt or residue which remains on
the fountain may obstruct water flow, thereby
6 causing unnecessary noise. Should you experience
noise from the pump, please disassemble it, flush
8 parts with water to remove particles, wipe dry, and
reassemble. Please refer to our instruction manual
10 should the noise remain, as this may be caused by a
variety of other factors.

12 Due to the imperfect edges which are
inherent in this fountain or any made from natural
14 stone, water may splash outside the base of the unit.
Therefore, we strongly recommend that you place
16 your fountain on a waterproof surface or that you
cover the surface with some waterproof barrier.

18 For further information, please call 1-800-
SERENITY or e-mail us at custserv@serenity.com

172. Which of the following is the best heading for this notice?
- (A) Hints for Using Your Serenity Fountain
 - (B) How to Repair Your Fountain's Water Pump
 - (C) Finding and Processing Decorative Stones
 - (D) Protecting Surfaces from Water Damage
173. What can be inferred about the decorative stones mentioned in the notice?
- (A) They must be polished before use.
 - (B) They have already been rinsed.
 - (C) They may obstruct the flow of water.
 - (D) They do not come with all fountains.

174. What does the word *this* in line 10 refer to?

- (A) The pump
- (B) The noise
- (C) The water
- (D) The manual

175. What does the reading say about the imperfect edges of the fountain?

- (A) They may scratch the surface on which they are placed.
- (B) They may cause personal injury if not handled carefully.
- (C) They are a flaw found in some fountains, but can be repaired.
- (D) They may cause water to splash out of the fountain.

Questions 176 to 180 are based on the following newspaper feature:

Recipe Revelations by Joan Travis

Today is the first day of the Chinese New Year. Penny Zhang, proprietor of the Bamboo Forest, tells us that the traditional meal she serves at her restaurant on Chinese New Year ends with a sweet cake called Nin Go. It is believed that those who eat this delicacy will have good luck in the year ahead.

Nin Go Cake

- | | |
|---------------------------------|--|
| 2 cups water | 1/2 cup raisins |
| 1 cup sugar | 1/2 cup dried dates, apricots, or cherries
(if desired) |
| 2 1/2 cups glutinous rice flour | |

Put sugar in a large mixing bowl and add water. Stir in flour 1/2 cup at a time, mixing until a smooth batter forms. Add fruit. Coat 10 inch pan with cooking spray, then pour in batter. Place cake in steamer basket and set over boiling water. Steam for 40-50 minutes, or until the Nin Go has risen and become translucent. Allow cake to cool, slice into wedges, and serve.

Nutritional information (per slice):

271 calories, 64.7 grams carbohydrates, 0 mg cholesterol, 0.6 grams fat, 2.2 grams protein, 3 mg sodium.

"Recipe Revelations" is a weekly feature that publishes recipes from local restaurants. If there is a recipe you would like to see, contact the Daily Bugle food editor by e-mail (Jtravis@dailybugle.com) or call 272-747-0216.



176. Which of the following is given as an OPTIONAL ingredient of Nin Go?

- (A) Cherries
- (B) Salt
- (C) Raisins
- (D) Flour

177. How long should the flour be stirred into the sugar and water?

- (A) Until it forms a smooth mixture
- (B) For 40-50 minutes
- (C) Until it becomes translucent
- (D) Until it is cool and ready to eat

GO ON TO THE NEXT PAGE

178. How is Nin Go cooked?

- (A) It is baked.
- (B) It is boiled.
- (C) It is fried.
- (D) It is steamed.

179. Which of the following is NOT present in Nin Go?

- (A) Fat
- (B) Sodium
- (C) Cholesterol
- (D) Protein

Questions 181 and 182 are based on the following newspaper article:

Trevor Baylis, inventor of the wind-up radio designed for areas of Africa and other locales where there is no electricity and batteries are expensive, has now developed a wind-up computer. The laptop, powered by a spring that runs a small generator, is just the first of 150 new wind-up products Baylis is perfecting.

Next up: a wind-up television and a wind-up indoor lighting system.

180. Which of the following is most likely to appear in the column "Recipe Revelations" the following week?

- (A) Another way to have good luck in the New Year
- (B) A recipe used at some other restaurant
- (C) More recipes for Chinese New Year dishes
- (D) Another way of preparing Nin Go

181. Which of these wind-up products was first developed by Trevor Baylis?

- (A) A television
- (B) An indoor lighting system
- (C) A radio
- (D) A laptop computer

182. It can be inferred from the article that Baylis's products could also be marketed in which of these ways?

- (A) As a high-technology substitute for existing products
- (B) As a substitute for existing products in case of an electrical emergency
- (C) As a low-cost substitute for existing products
- (D) As a substitute for existing products when little or no maintenance is required



The Art of Communicating Globally

by Richard Pryce and Sachiko Mori-Pryce

St. George Press, Ltd.

What's the best time to call someone in Australia if you are in New York? What greeting do you use to begin a business letter to someone in Turkey? How do you find the e-mail address of a company in South Africa? What's the country code you'll need to call someone in Brazil? These and countless other questions are answered in this new guidebook. It covers the ins and outs of transnational contact by phone, fax, mail, and e-mail. There are more than 500 pages of useful tips on how to address business people in 110 countries, how to polish your English for international correspondence, how to design stationery and forms for use in various nations, and how to say hello, thank you and other important phrases in more than 70 languages. The book also provides information about translation software, postal codes, the meaning of various telephone signals in different countries, and many other topics. Like the popular guidebook *Negotiating Your Way Around the Globe* that the couple previously collaborated on, this volume should occupy a prominent place on the office bookshelves of all our readers.

183. The magazine in which this review appeared is probably directed at which of these groups?
- (A) Commercial artists
 - (B) International business persons
 - (C) Communication experts
 - (D) World travelers
184. The book that is reviewed probably does NOT answer which of these questions?
- (A) What does it mean if I telephone an office in Malaysia and hear a series of chimes?
 - (B) What is the country code I need to send a fax to someone in Venezuela?
 - (C) How do I say "Hello" if I call someone in Finland?
 - (D) What should I wear to a business luncheon in Egypt?

185. How many pages does the book *The Art of Communicating Globally* probably have?
- (A) 70
 - (B) 110
 - (C) 512
 - (D) 1,246
186. What does the review say about the book *Negotiating Your Way Around the Globe*?
- (A) It is not as popular as *The Art of Communicating Globally*.
 - (B) It was written by the same authors who wrote *The Art of Communicating Globally*.
 - (C) It will not be needed by someone who has the book *The Art of Communicating Globally*.
 - (D) It is more expensive than *The Art of Communicating Globally*.

GO ON TO THE NEXT PAGE

Questions 187 to 189 are based on the following e-mail:

Johnstone...

SUBJECT: Additional time needed for audit
DATE: Thurs. 1 Aug. 2002 15:45 EDT
FROM: Mark Chambers <mchambers@jcvassociates.com>
TO: Michelle Kinsdale <mich_kinsdale@sunburst.com>
CC: Paul Avilo <paul_avilo@sunburst.com>

Ms. Kinsdale:

It appears that it's going to take us a little longer than we anticipated to complete our audit of Sunburst Electronics.

From discussions with your marketing manager Paul Avila, I've learned that various members of the marketing team did not save all their travel receipts. We'll have to reconstruct these from the records of credit card companies, hotels, airlines, and so on. Of course, this will be more time-consuming than reviewing the original documents. I've discussed this problem with Mr. Avila and he will in the future hold all receipts for a period of three years.

As agreed in our contract, we will be billing you for this additional time at our regular rate of \$120 an hour (in addition to the basic audit fee of \$10,000).

On the positive side, all your employees have been remarkably cooperative and helpful. I can see that they have spent a lot of time getting ready for this audit.

Thanks!
Mark Chambers, CPA
Johnstone, Chambers, Voorhees & Associates

187. What basic message is Mr. Chambers sending Ms. Kinsdale?

- (A) The audit will take longer and cost more than expected.
- (B) He will be unable to finish the audit.
- (C) He has lost some important documents.
- (D) The audit fee has been reduced.

189. How much will Mr. Chambers' company charge Ms. Kinsdale's company for the additional work?

- (A) A total of \$120
- (B) \$120 for each additional hour
- (C) A total of \$10,000
- (D) \$10,000 a year for three years

188. What problem does Mr. Chambers discuss in this e-mail?

- (A) He has been unable to get information from credit card companies.
- (B) Some necessary documents are not available.
- (C) The staff has been very uncooperative.
- (D) Mr. Avila has refused to keep receipts in the future.

Questions 190 to 194 are based on the following document:

Fast Ferry Schedule

Buenos Aires-Montevideo-Buenos Aires				
Ferry	Departs Buenos Aires	Arrives Montevideo	Departs Montevideo	Arrives Buenos Aires
<i>Juan Patricio</i>	7:45	10:00	11:00	13:15
	14:15	16:30	17:30	19:15
<i>Atlantico</i>			7:30	9:45
	10:45	13:00	14:30	16:45
	18:00	20:15		
Buenos Aires-Colonia-Buenos Aires				
Ferry	Departs Buenos Aires	Arrives Colonia	Departs Colonia	Arrives Buenos Aires
<i>Isabella</i>	8:05	9:00	10:30	11:25
	13:05	14:00	15:30	16:25
	18:05	19:00	20:30	21:25
<i>Delfin</i>			7:20	8:15
	9:45	10:35	12:10	13:05
	14:25	15:20	17:00	17:55
	19:25	20:15		

190. Which of these ferries sails earliest in the morning?
- (A) *Juan Patricio*
 (B) *Atlantico*
 (C) *Isabella*
 (D) *Delfin*
191. What can be inferred about the *Atlantico*?
- (A) It sails only five days a week.
 (B) It is the fastest of the four ships.
 (C) It stays overnight in Montevideo.
 (D) It is larger than the *Juan Patricio*.
192. After arriving in Montevideo at 10:00, how long does the *Juan Patricio* remain there?
- (A) 45 minutes
 (B) One hour
 (C) One hour and 45 minutes
 (D) Three hours
193. When does the last ferry leave Colonia every day?
- (A) 15:30
 (B) 17:00
 (C) 20:30
 (D) 21:25
194. How many round trips does the *Isabella* complete every day?
- (A) One
 (B) Two
 (C) Three
 (D) Six

GO ON TO THE NEXT PAGE 

Questions 195 to 198 are based on the following article:

Prices for patchouli oil have soared this year from about \$10 a pound last January to over \$75 a pound, and it is predicted that prices will reach \$100 a pound by the end of the year. This aromatic oil is distilled from the leaves of the patchouli plant and is one of the most important ingredients in nearly all commercially produced scents. Although sometimes used as a “stand-alone” scent, especially back in the 1960’s, today it is primarily used to “fix” other scents in products: costly French perfumes, shampoos, hand soaps, scented candles, room deodorants, and many others.

Traders in essential oils are particularly concerned about the leap in patchouli prices because, until recently, they have been remarkably stable. Traders say that prices have been driven up by a huge production

shortfall on the Indonesian island of Sumatra, where the bulk of the world’s patchouli plants are grown and the fragrant oil is distilled. Sumatran farmers have been shunning patchouli production lately because of the static low prices. The prolonged drought in Indonesia has also contributed to lower production. Demand for patchouli, however, has continued to accelerate quickly, particularly in the United States, which account for 60 to 70 percent of annual patchouli consumption worldwide.

With prices at record levels, many farmers have returned to growing patchouli, but even in the tropics, it will be some time before the patchouli plants are ready to be harvested. Once these plants are mature, prices will probably stabilize but in the meantime, prices will probably continue to skyrocket.

195. How much will a pound of patchouli probably cost by the end of the year?
- (A) \$10
 - (B) \$75
 - (C) \$100
 - (D) \$150
196. What part of the patchouli plant contains the aromatic oil?
- (A) The flowers
 - (B) The roots
 - (C) The stems
 - (D) The leaves
197. Which of these products probably does NOT contain patchouli oil?
- (A) Fragrant fruit juices
 - (B) Candles that smell like vanilla
 - (C) Expensive perfume from France
 - (D) Hand-milled scented soap
198. What does the author say about the demand for patchouli oil?
- (A) It has recently stabilized
 - (B) It has been growing rapidly.
 - (C) It has grown in the United States but dropped elsewhere.
 - (D) It has been slowly going down as prices have risen.

Questions 199 and 200 are based on the following advertisement:



Think Globally

With World View Software!

Keep time with the rest of the world by converting your computer screen into a world clock. Clocks located at the top of the screen display the current time for every time zone in the world in an attractive graphical display. The display can be customized to display the local time for virtually any world city you choose. World View Software adjusts automatically for Daylight Saving Time. Can also be set up as a screen saver.

Typically costs \$45.00 or more at retail stores and \$40 when you order from the software maker, but now available for Nationwide Airline passengers at the discount rate of only \$34.95 when you order directly from Sky Catalogue!

199. The advertisement indicates that which of these can be adjusted by users of World View Software?
- (A) The colors of the graphical display
 - (B) The cities that are displayed
 - (C) The time zones that are shown
 - (D) The position of the clocks on the screen
200. According to the advertisement, where is World View Software available at the lowest cost?
- (A) From retail stores
 - (B) On board most airline flights
 - (C) Directly from the software maker
 - (D) From the Sky Catalogue

THIS IS THE END OF THE READING COMPREHENSION SECTION. IF YOU FINISH BEFORE TIME IS UP, YOU MUST WORK ONLY ON PROBLEMS IN THIS SECTION.