



Directions and invitations

VOCABULARY

- airport transfer
- apologize
- business
- acquaintance
- check in online
- exit
- intersection
- nearest
- passer-by
- past
- straight ahead

10.1 Finding your way

Take the west exit out of the station.
Go past the coffee shop on the left.
We're on the eighth floor.
Should I e-mail you a link to our website?

10.2 Asking for and giving directions

Excuse me, can you tell me how to get to the Celestine Hotel?
Make a left onto Hibiya Street.
It's on your right, just past the bank.
It's behind the station.

10.3 Apologies and invitations

I'm really sorry I'm late.
I'm afraid I couldn't find a parking space.
Would you like to join me for dinner?
Why don't we meet at the restaurant?
Is seven thirty all right with you?

10.4 Numbers - travel times

How long does it take to get there by bus?
It takes twenty minutes.
It's a twenty-minute ride.

10.5 How do I get there?

Speaking practice

10.6 Culture file

Airport transfer

MODULE 10.1

SPEAKING

LISTENING

Finding your way

Look at the photo. Describe the situation.

Ms. Kobayashi is telling Mr. Riley how to get to the Shiba Building.

59 Listen and mark the building on the map.



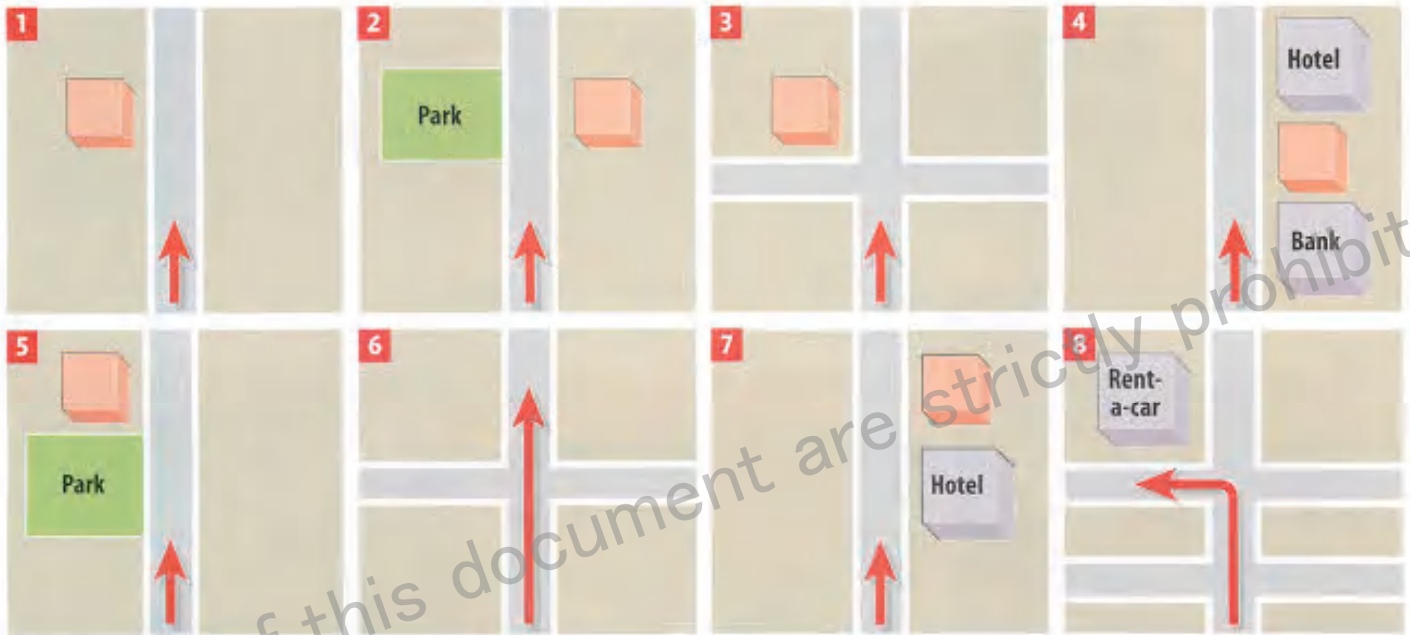
MODULE 10.2

Asking for and giving directions

READING

Match the sentences (a–f) with the maps below (1–8).

- a Go straight ahead.
- b It's on your left.
- c It's on your right, just past the hotel.
- d It's between the bank and the hotel.
- e It's across from the park.
- f Make a left at the second intersection
- g It's next to the park.
- h It's on the corner.



LISTENING

60 Look at the map on page 60. Listen and complete the conversation. Then practice with a partner.

- A** Excuse me, _____
 _____¹ how to get to the NN building?
- B** Yes. Go out of the station and make a _____² onto
 Dai-ichi keihin Street. Go _____³ the coffee shop, and make a
 left into Hibiya Street. The NN building is on your right, _____
 _____⁴ the NEC.
- A** Thank you very much.

SPEAKING

- 1** Look at the map on page 60. Work with a partner. Ask each other for directions from JR Tamachi Station to these places:
- a the nearest post office
 - b the Celestine Hotel
 - c the NEC
 - e Tokyo Joshi Gakuen
 - f Nippon Rent-a-car
 - g the Sports Center
- 2** Work with a partner. Choose a place on the map. Don't tell your partner. Give directions to the place from the Celestine Hotel. Your partner will tell you the name of the place.

MODULE 10.3

Apologies and invitations

LISTENING

61 Listen and complete the conversation. Then practice with a partner.

A Good afternoon, Ms. Kobayashi. I'm really sorry I'm _____ 1.

B Oh, that's all right.

A I'm afraid I _____ 2.

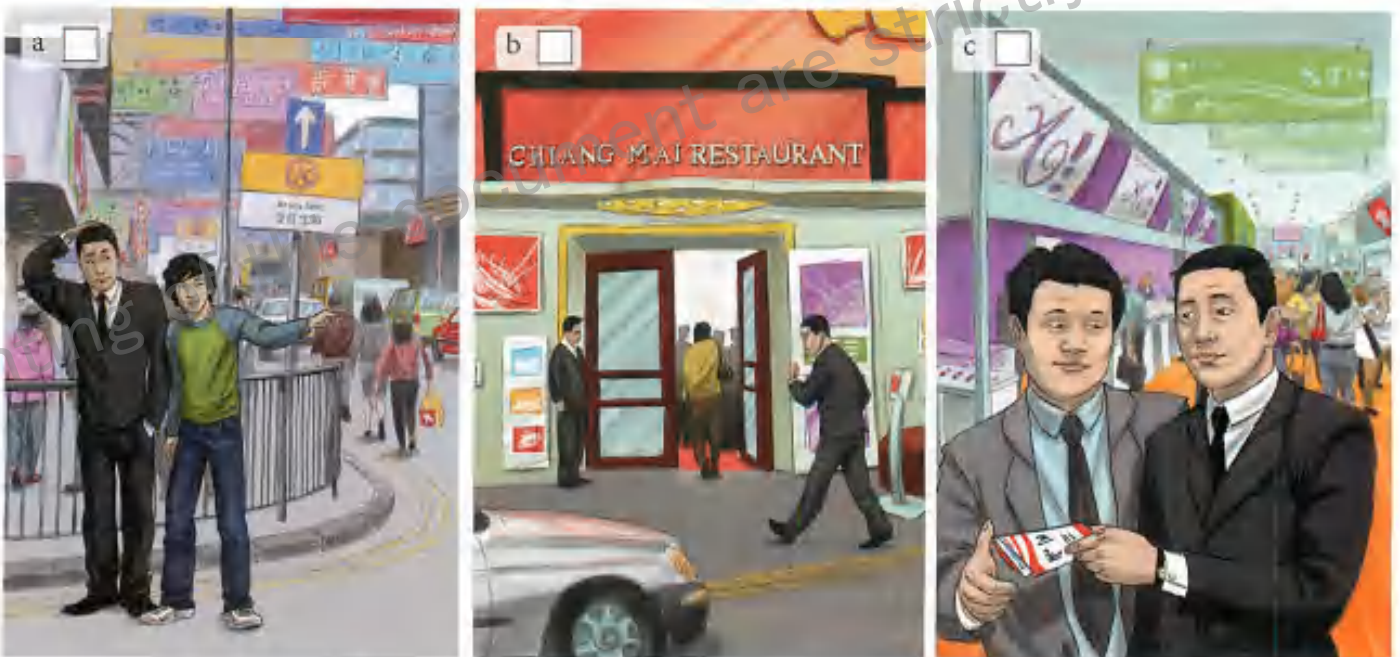
SPEAKING

Work with a partner. Take turns to apologize. Use these ideas.

Time:	evening	morning	morning	afternoon
Apologize to:	Mr. Jang, a colleague	Ms. Seok, a client	Ms. Ueda, a client	Mr. Wallace, your boss
For:	kept you waiting	didn't bring a new catalogue	didn't e-mail you yesterday	don't have the sales report
Reason:	couldn't find a parking space	not printed yet	kept bouncing back - must have wrong address	still working on it - Hong Kong office need to send data

LISTENING

1 62 Mr. Park is in Hong Kong for a trade show. Listen and number the pictures in the correct order.



2 62 Listen again. Circle the correct answers.

- a Mr. Lau is a *friend* / *business acquaintance*.
- b Mr. Lau invites Mr. Park to *lunch* / *dinner*.
- c He knows a good *Thai* / *Chinese* restaurant near the trade show.
- d It takes *five* / *ten* minutes to get there on foot.
- e Mr. Lau offers to *draw a map* / *text Mr Park the directions*.
- f They plan to meet at *6:30* / *7:30* p.m.
- g The passer-by *gives directions to the restaurant* / *can't help*.
- h Mr. Park apologizes for *getting lost* / *being late*.

LISTENING

1 63 Listen and complete the chart.

	<i>transportation</i>	<i>hours</i>	<i>minutes</i>
a	bus	_____	_____
b	plane	_____	_____
c	car	_____	_____
d	foot	_____	_____
e	train	_____	_____
f	cab	_____	_____

2 We can talk about travel times in two ways, e.g.

A *How long does it take to get there by bus?*

B *It takes twenty minutes. / It's a twenty-minute ride.*

Work with a partner. Take turns asking and answering about the other trips in the chart above.

Useful language:

by plane / flight on foot / walk by cab / ride

by car / drive by train / trip

SPEAKING

Student A Look at the airport transfer information below.

Student B Turn to page 85. Complete the information about journey times from the airport to the city center.

Start like this:

A *How long does it take to get from Bangkok airport to the city center?*

B *It takes about 15 minutes by train, on the high-speed rail link. / It's a 15-minute train ride.*

Airport	Journey time to city center
Suvarnabhumi International Airport (BKK) Bangkok, Thailand	High-speed rail link 15 minutes
Narita Airport (NRT), Japan	_____
Incheon International Airport (ICN), South Korea	50 minutes by taxi
Singapore Changi Airport (SIN), Singapore	_____
Hong Kong International Airport (HKG), Hong Kong	23 minutes by train
Taiwan Taoyuan International Airport, Taipei (TPE), Taiwan	_____
Ninoy Aquino International Airport Manila (MNL), Philippines	1 hour 30 minutes by bus

SPEAKING

Student A Look at the map of Chun Wan (Central District) in Hong Kong.
Student B Turn to page 86.



Ask Student B for directions to the following places from City Hall and mark them on your map. Then answer Student B's questions.
 Start like this: *Excuse me ...*

- a the nearest bus terminal
- b the Bank of China
- c the Gloucester Tower
- d the Ritz Carlton Hotel

Useful language:

Excuse me, how do I get to ...?
It's on your left / right.
Make a left / right.
It's next to / across from / between ... and ...
Go straight on.
It's on ... Street.

READING



A recent travel survey suggests that traveling to the airport and trying to get there on time is one of the most stressful parts of a journey – more than not forgetting your ticket or passport, or remembering to lock the doors when leaving your home.

20% of travelers worry more about the transfer from the airport into the local city center than the flight.

Experts suggest that checking in for your flight online and booking your airport transfer is a good way to reduce stress during the journey.

SPEAKING

Work with a partner. Ask and answer:

How long does it take to travel from your nearest airport into the city center – by car, by train, and by bus?

Which form of transport would you recommend / not recommend for an overseas visitor coming to your country for the first time?

How do you usually travel to and from the airport – in your home country / in another country you know well?

Have you ever had problems with your airport transfer? What happened?

Do you think that checking in online and booking your transfer is a good idea?

Useful language:

It takes about ...

I think it's a good idea to ...

I wouldn't recommend ... because ...

When I went to ..., the airport transfer was fantastic / terrible / really slow ...