



At the Circus

Conversation Time

A. ^{CD2}₂₇ Listen and repeat.



What's wrong?



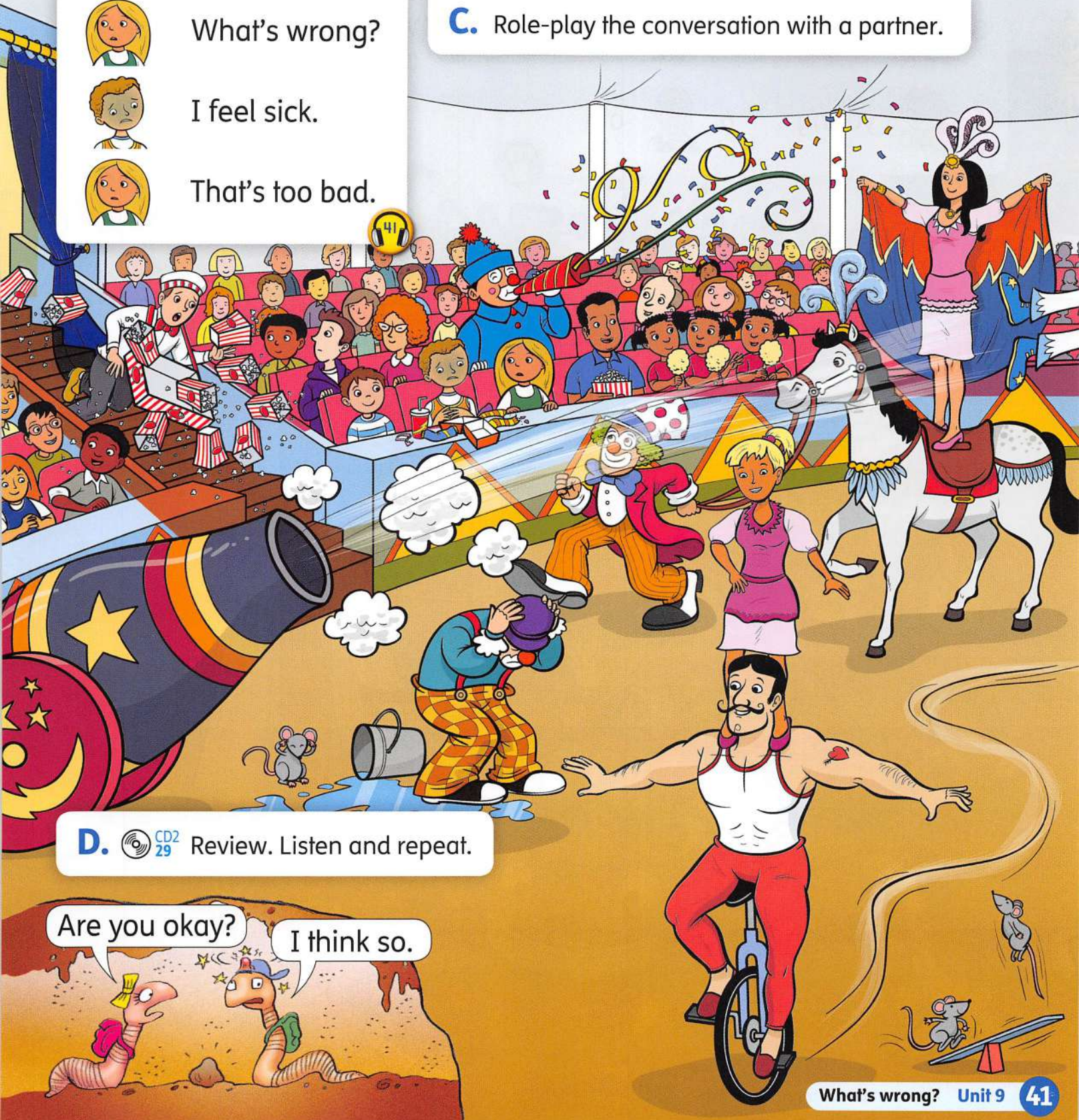
I feel sick.



That's too bad.

B. ^{CD2}₂₈ Listen and find the speakers.

C. Role-play the conversation with a partner.



D. ^{CD2}₂₉ Review. Listen and repeat.


Are you okay?


I think so.

A.  ^{CD2}₃₀ Listen and repeat.

1.  tall 2.  short

3.  fat 4.  thin

5.  young 6.  old



B.  ^{CD2}₃₁ Listen and write the letter.

C. Point and say the words.

D.  ^{CD2}₃₂ Listen and point.

E. Write the words.
(See pages 70–74.)



A.  **CD2**
33 Listen and repeat. 

He's
She's

short.


He's = He is

She's = She is

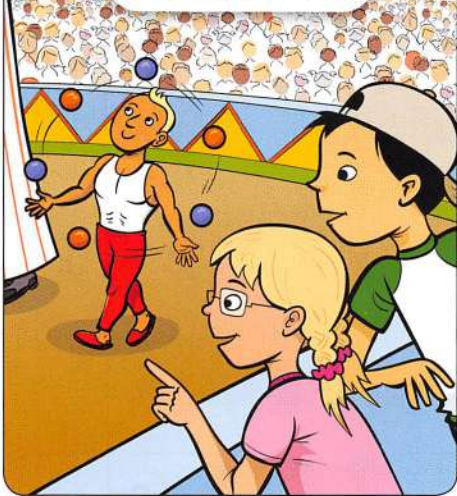
He isn't
She isn't

tall.

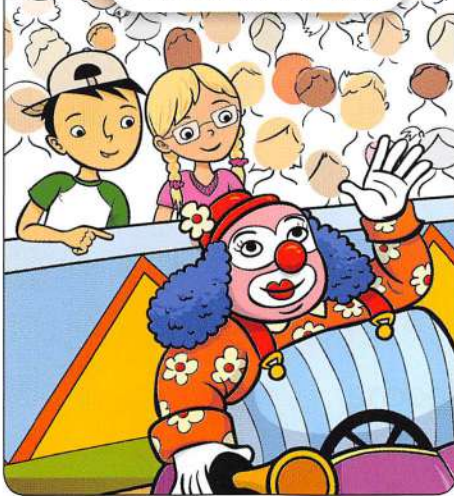
isn't = is not

B.  **CD2**
34 Listen and repeat. Then practice with a partner.

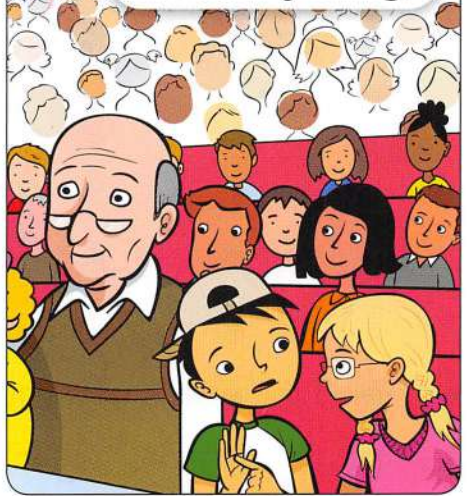
1. He's short.
He isn't tall.



2. She's fat.
She isn't thin.



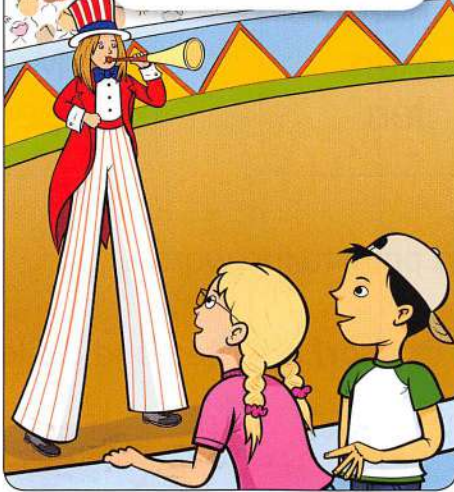
3. He's old.
He isn't young.



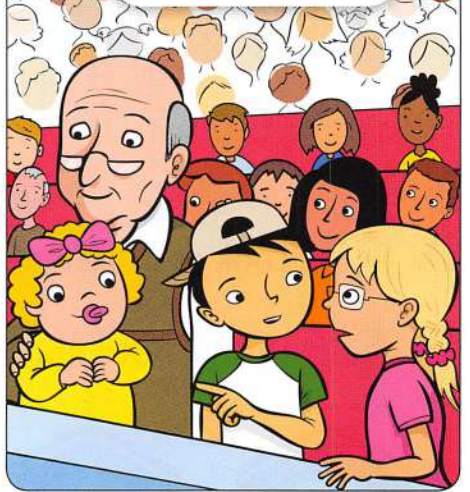
4. He's thin.
He isn't fat.



5. She's tall.
She isn't short.



6. She's young.
She isn't old.

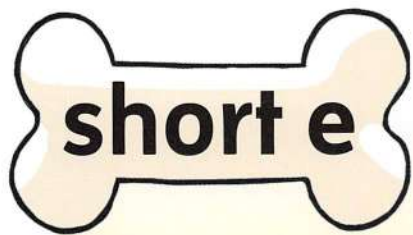


C. Look at page 42. Point to the picture and practice with a partner.

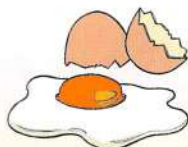
D.  **CD2**
35 **SONG**  Listen and chant.
(See "The Tall/Short Chant" on page 68.)



A. CD2 36 Listen and repeat. 45



bed



egg



pen



vet

B. CD2 37 Does it have **short e**? Listen and circle ✓ or X.

1.



✓ X

2.



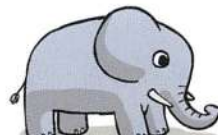
✓ X

3.



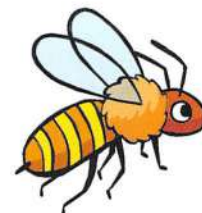
✓ X

4.



✓ X

5.



✓ X

C. Read the words with your teacher.

1.

-e-
-ed

bed
fed
Ted

2.

-e-
-en

hen
men
ten

3.

-e-
-eg

beg
Meg
peg

4.

-e-
-et

net
pet
set

D. CD2 38 Look at C. Listen and point to the words.

E. CD2 39 Does it have **short a** or **short e**? Listen and circle.

1.



2.



3.



4.



5.



6.

