

Ss

Begins with s

sax



seven



sit



socks



sun



Ends with s

class



kiss



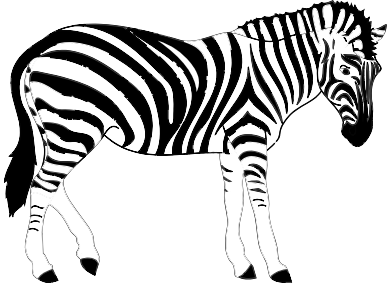
octopus



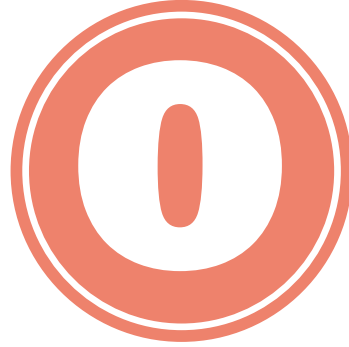
Zz

Begins with z

zebra



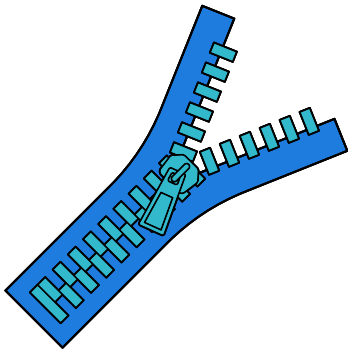
zero



zigzag



zipper



zoo

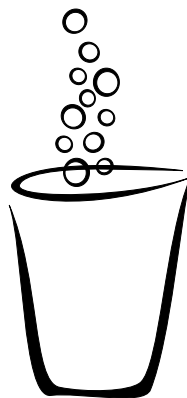


Ends with z

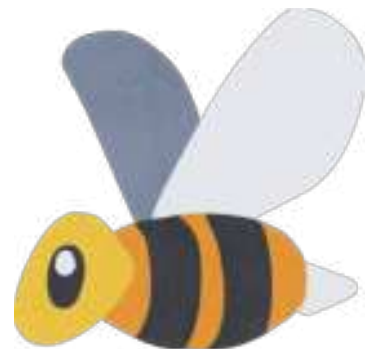
jazz



fizz



buzz

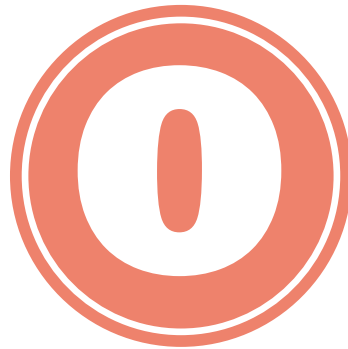
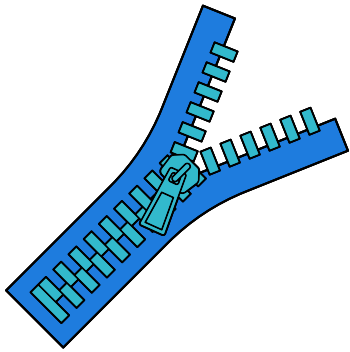
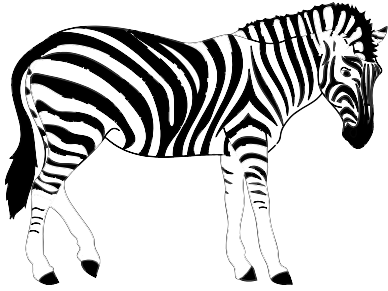


Ss

Zz

Say the word.

Does it begin with **s** or **z**?



Say the word.

Does it end with **s** or **z**?

