



SHAPES





square

The box is a square.



triangle

The umbrella is a triangle.

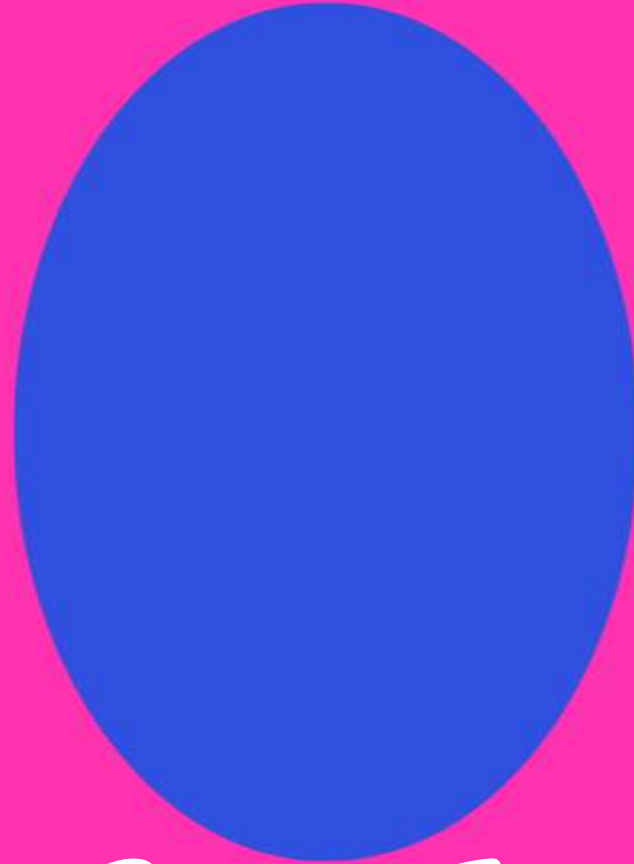


eTOC

English Teachers On Call

USE & PRINTING outside of eTOC are strictly PROHIBITED.

This document is for use in eTOC&Flex training sessions, use outside of eTOC is strictly prohibited. Copyright © Surely work.co- All Rights Reserved



circle

The pizza is a circle.

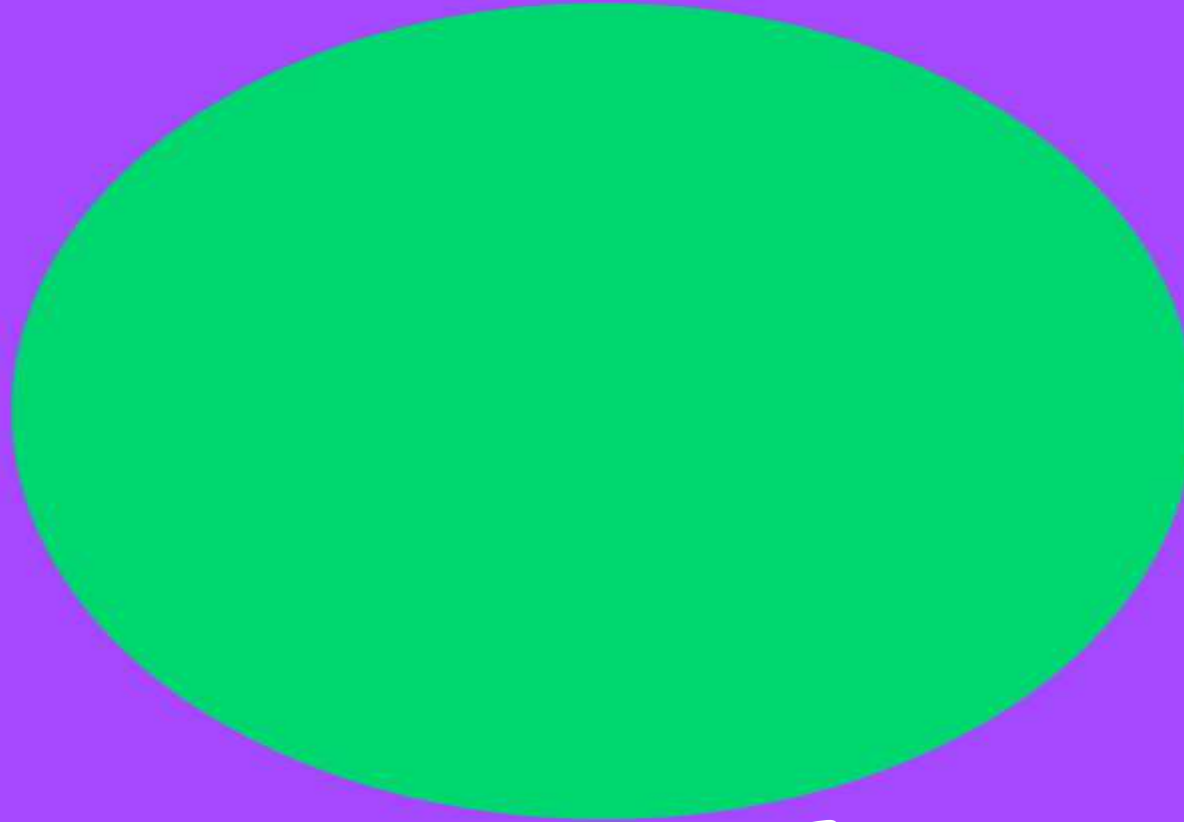




rectangle

The door is a rectangle.





oval

The egg is an oval.

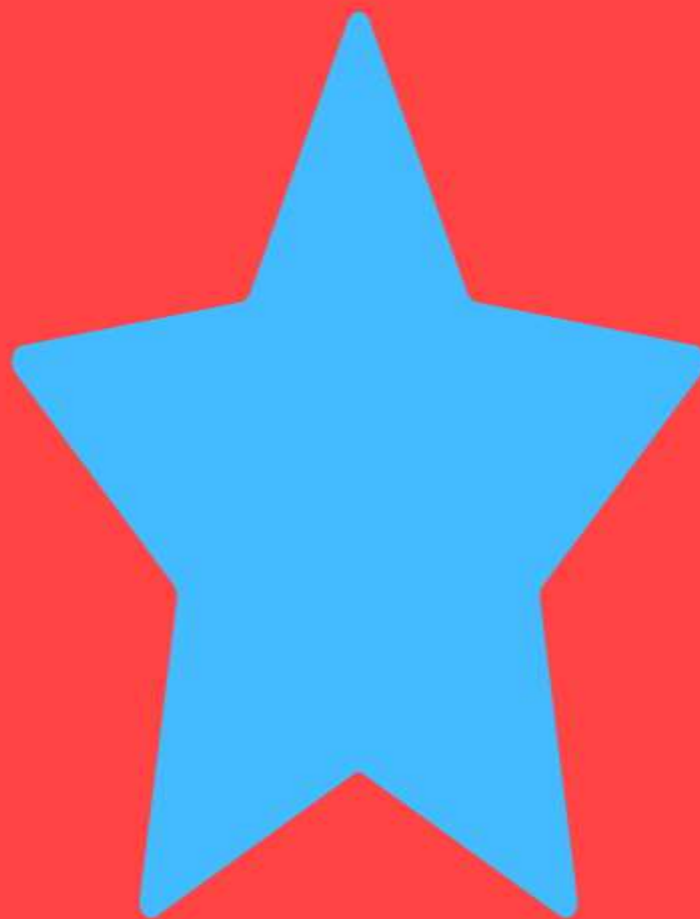


eTOC

English Teachers On Call

USE & PRINTING outside of eTOC are strictly PROHIBITED.

This document is for use in eTOC&Flex training sessions, use outside of eTOC is strictly prohibited. Copyright © Surely work.co- All Rights Reserved



star

You get a gold star.

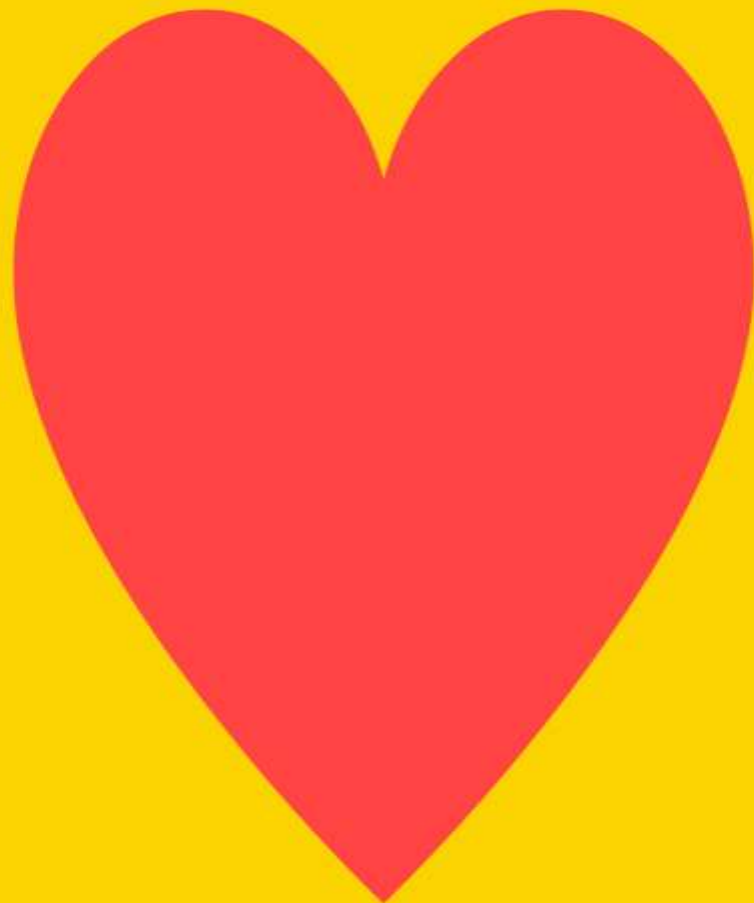


eTOC

English Teachers On Call

USE & PRINTING outside of eTOC are strictly PROHIBITED.

This document is for use in eTOC&Flex training sessions, use outside of eTOC is strictly prohibited. Copyright © Surely work.co- All Rights Reserved



heart

The heart is red.



eTOC

English Teachers On Call

USE & PRINTING outside of eTOC are strictly PROHIBITED.

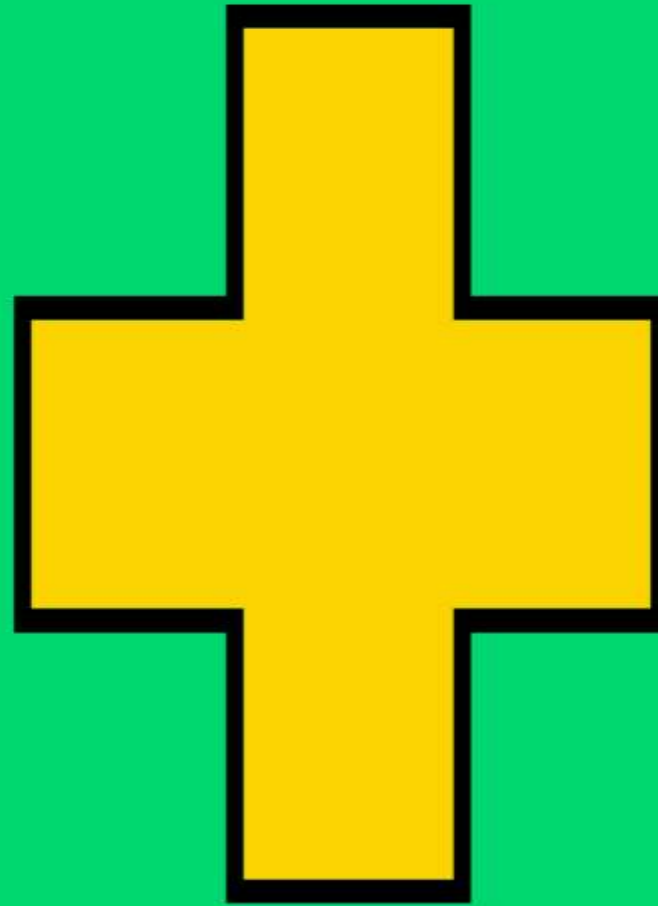
This document is for use in eTOC&Flex training sessions, use outside of eTOC is strictly prohibited. Copyright © Surely work.co- All Rights Reserved



diamond

The diamond is big.





CROSS

The hospital has a cross.



eTOC

English Teachers On Call

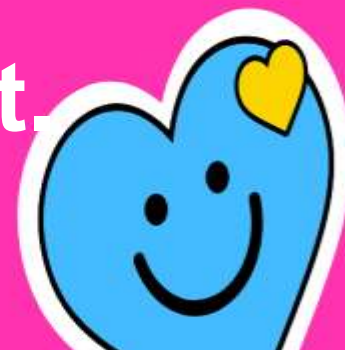
USE & PRINTING outside of eTOC are strictly PROHIBITED.

This document is for use in eTOC&Flex training sessions, use outside of eTOC is strictly prohibited. Copyright © Surely work.co- All Rights Reserved

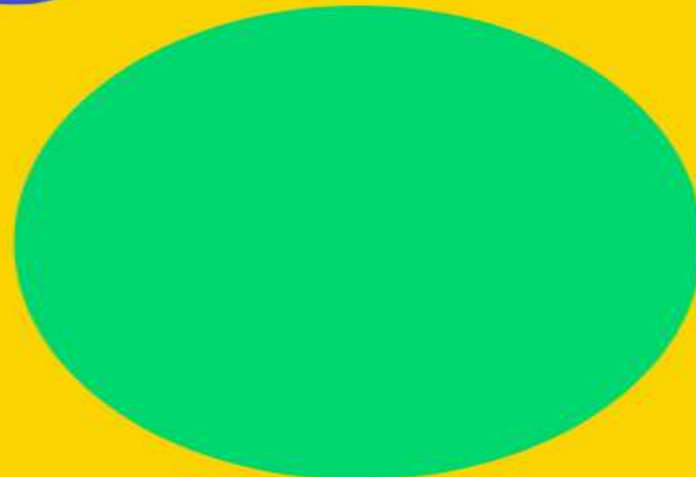
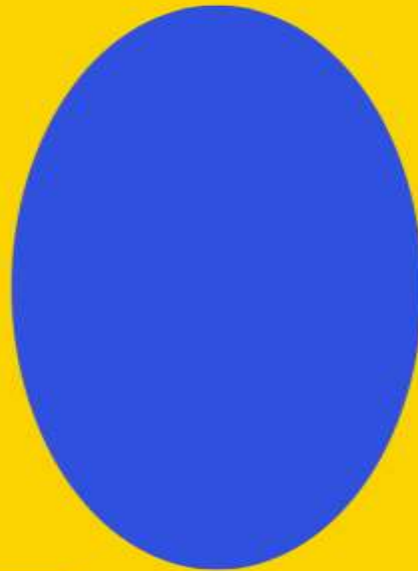


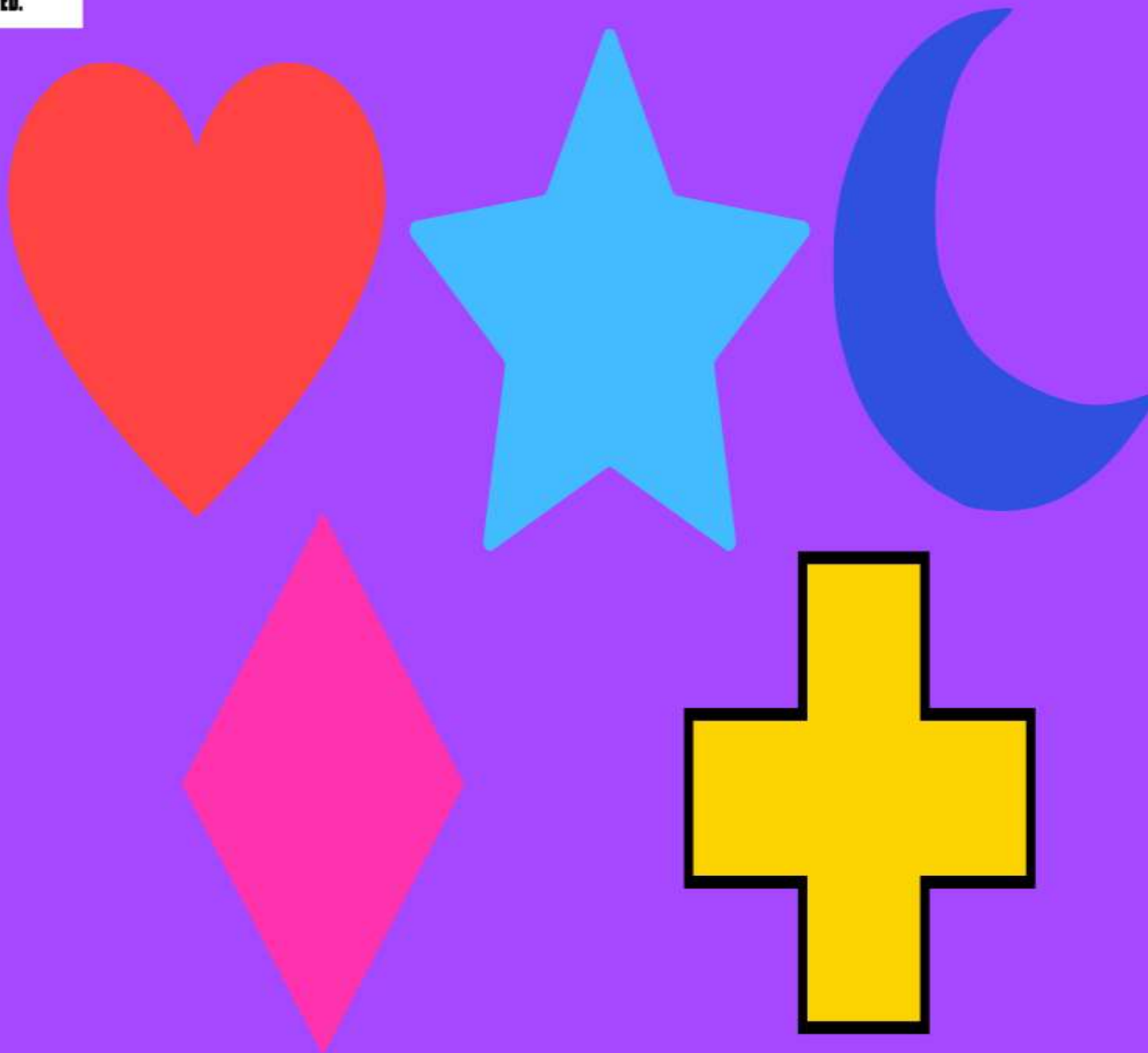
crescent

The moon is a crescent.



Identify each shape's name.





GREAT JOB!





THE END

