

eTOC

English Teachers On Call

**USE & PRINTING outside of eTOC are strictly PROHIBITED.**

This document is for use in eTOC&Flex training sessions, use outside of eTOC is strictly prohibited. Copyright © Surely work.co- All Rights Reserved

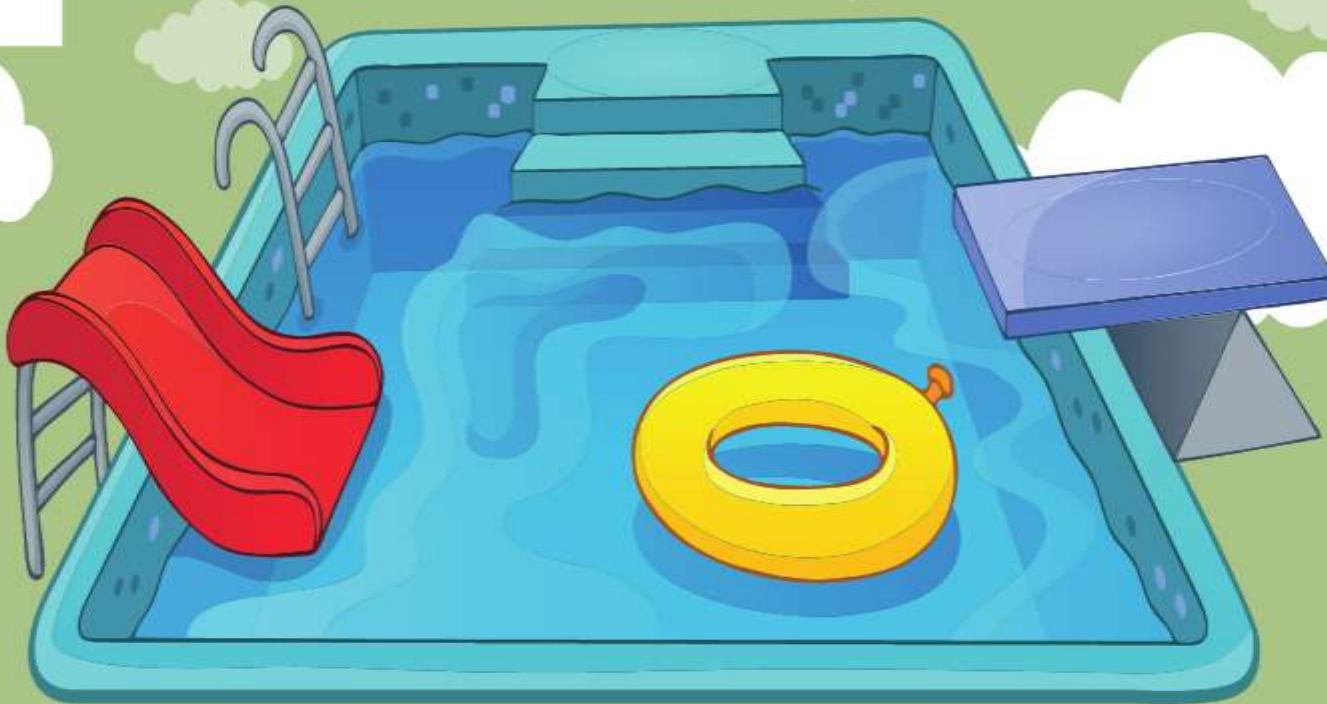
# CITY

1



# station

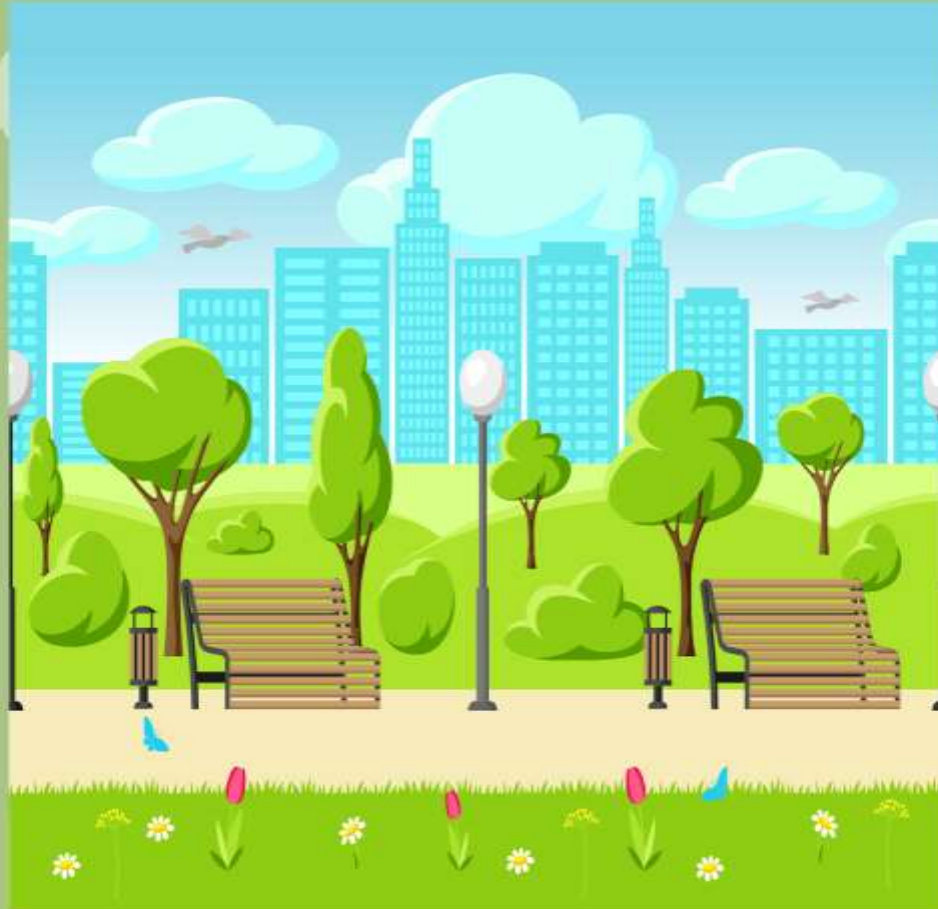
The station has trains.



# pool

**The pool has water.**





# park

**The park is windy.**

**eTOC**

English Teachers On Call

**USE & PRINTING outside of eTOC are  
strictly PROHIBITED.**

This document is for use in eTOC&Flex training sessions, use outside of eTOC is strictly prohibited. Copyright © Surely work.co- All Rights Reserved



# **school**

**The school is big.**





**hospital**

**The hospital is far.**





# ZOO

**The zoo has monkeys.**





# bus stop

**We wait at the bus stop.**





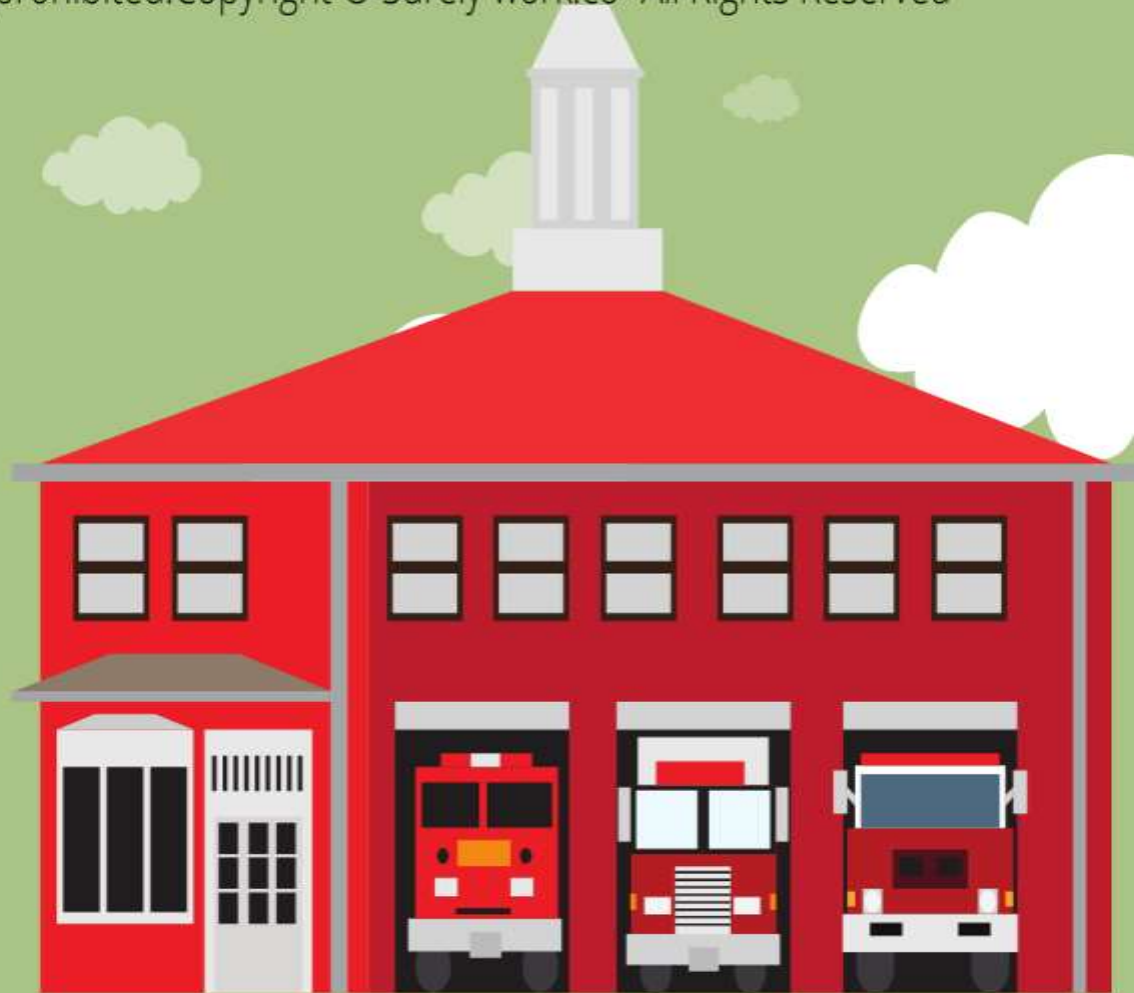


# restaurant



9

The restaurant food is delicious.



# fire station

The fire station is red.



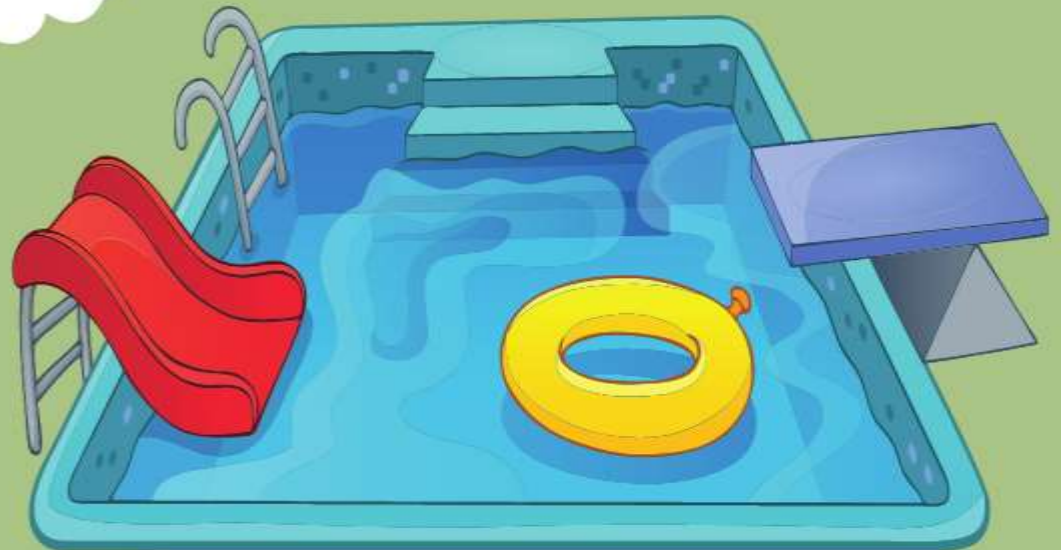


# supermarket

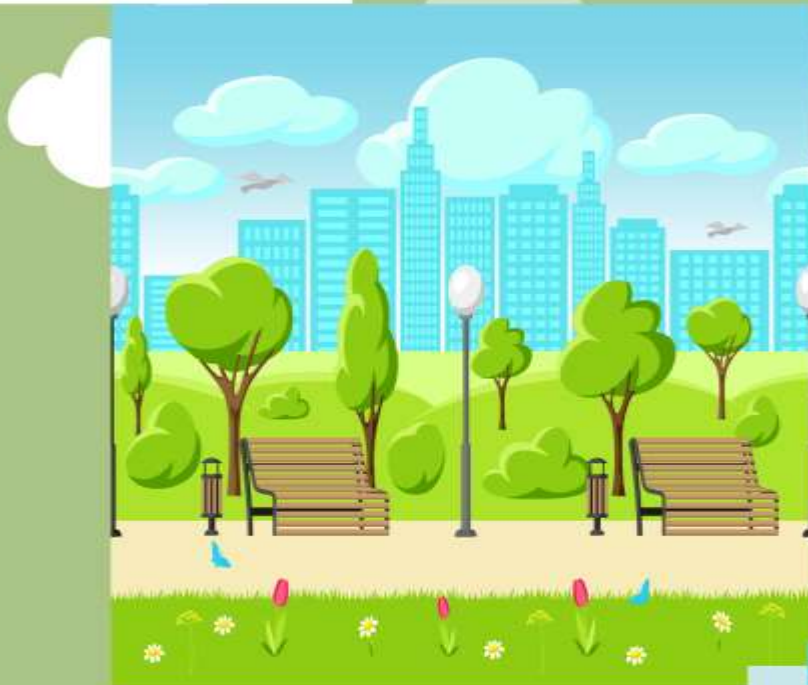
I go to the supermarket.



# Identify each place in the city's name.















# WELL DONE!







# THE END

