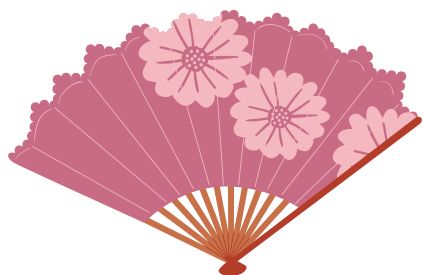


# Ff

Begins with **f**

**fan**



**fix**



**fork**



**fat**



**fox**



Ends with **f**

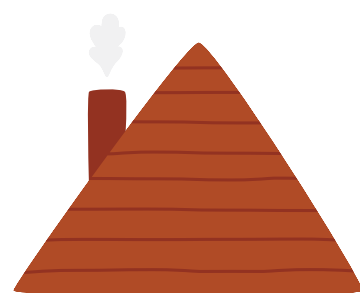
**leaf**



**elf**



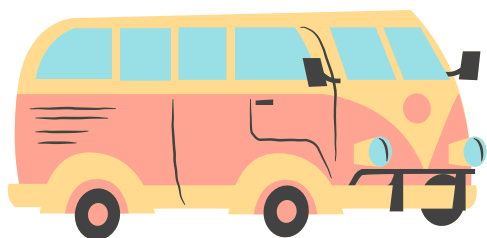
**roof**



# Vv

Begins with **v**

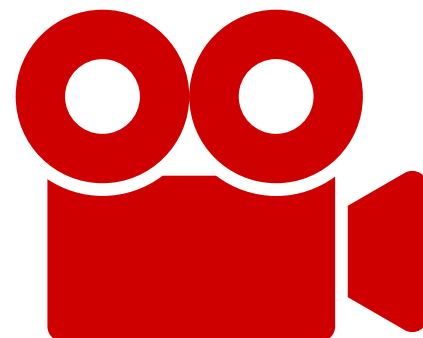
**van**



**vest**



**video**



**volcano**



**vegetables**

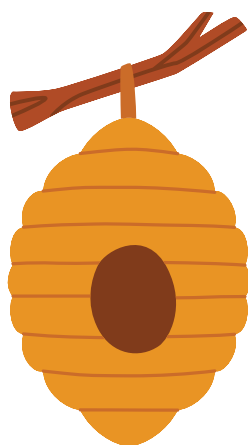


Ends with **v**

**five**



**hive**



**wave**

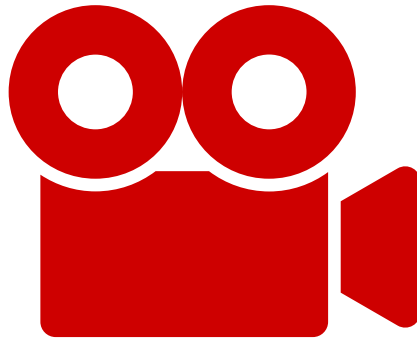
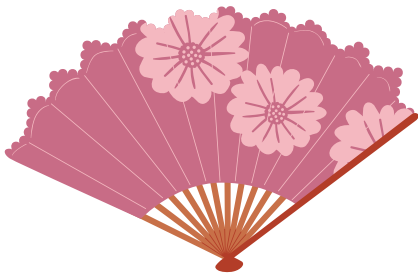
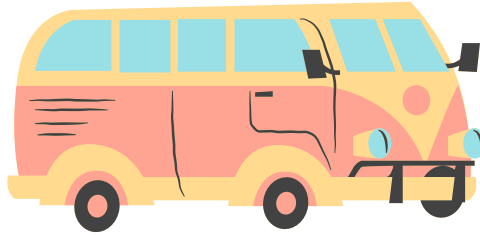


# Ff

# Vv

Say the word.

Does it begin with **f** or **v**?



Say the word.

Does it end with **f** or **v**?

