

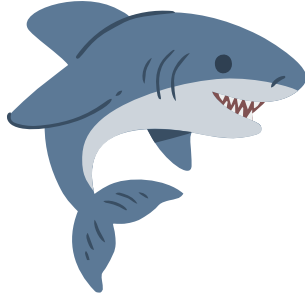
sh

Begins with **sh**

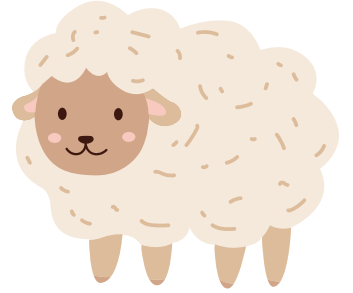
shape



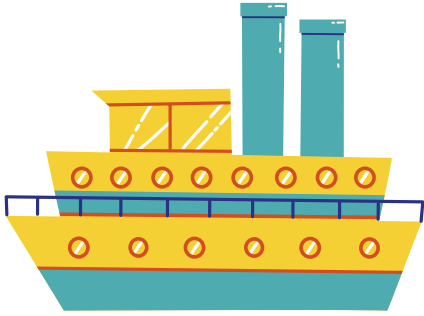
shark



sheep



ship



shop

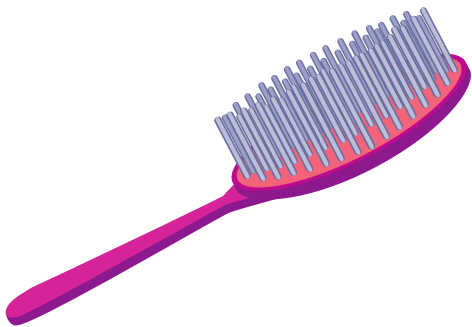


shut

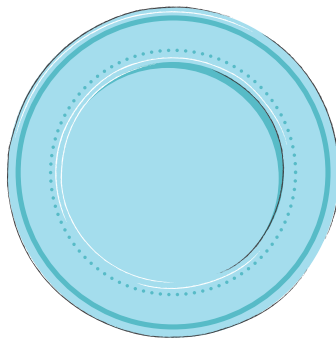


Ends with **sh**

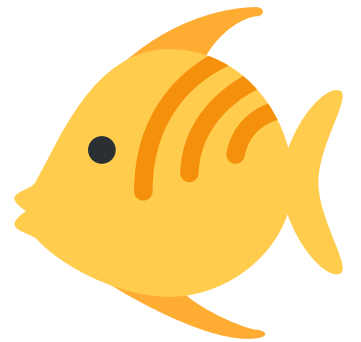
brush



dish



fish



wash



push



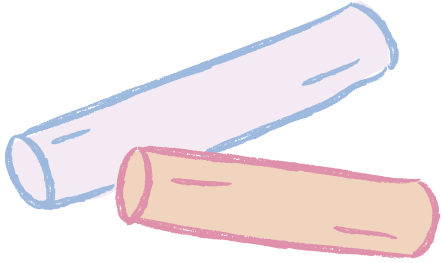
trash



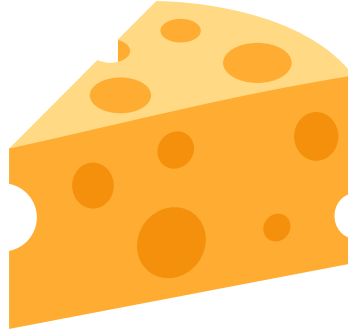
ch

Begins with **ch**

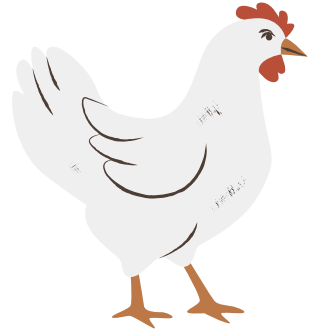
chalk



cheese



chicken



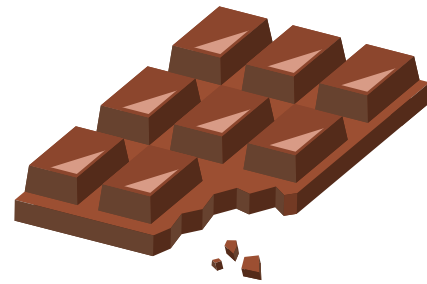
child



China



chocolate



Ends with **ch**

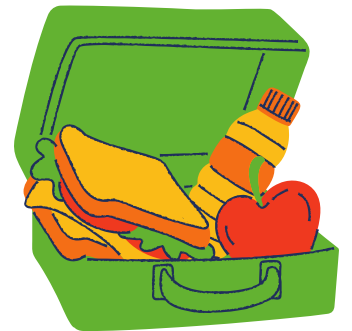
beach



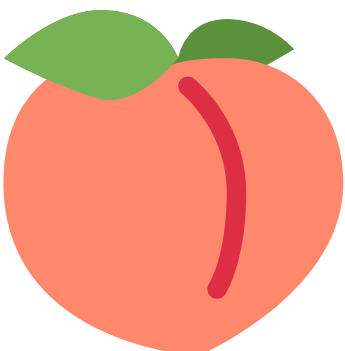
French



lunch



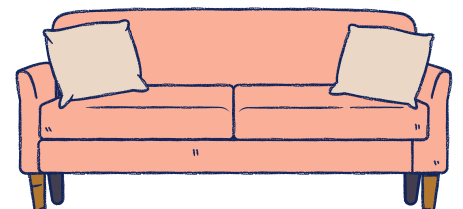
peach



teach



couch



th (soft)

Begins with soft th

thing



think



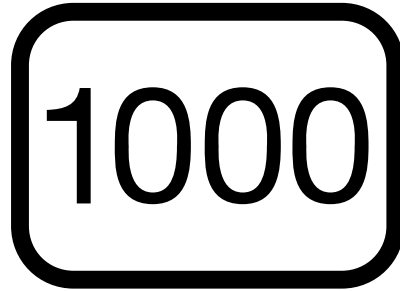
thirteen



thirsty



thousand



Thursday



Ends with th

bath



fourth



math



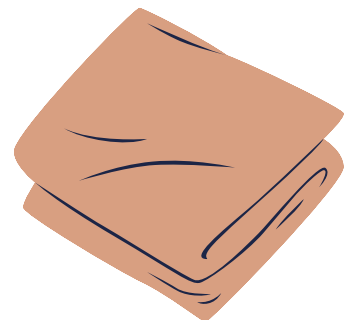
mouth



teeth



cloth



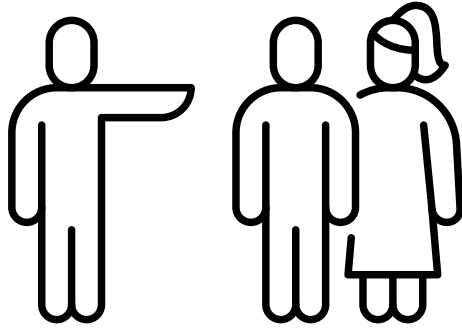
th (hard)

Begins with hard **th**

that



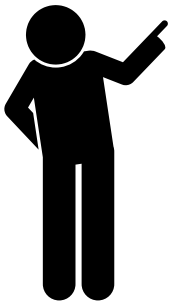
them



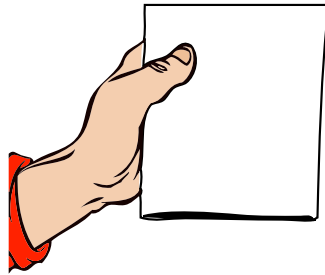
these



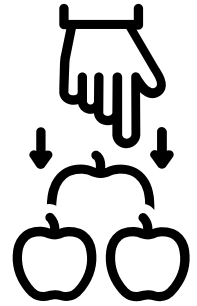
there



this



those



ph

Begins with **ph**

phone



photo



pharmacy



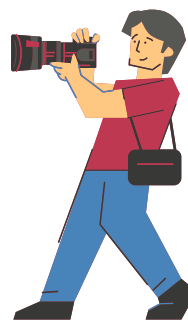
pheasant



phonics

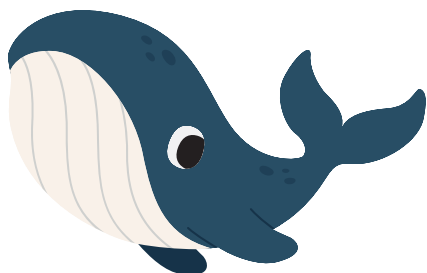


photographer



Begins with **wh**

whale



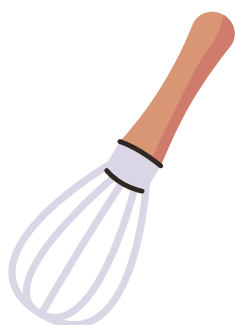
what



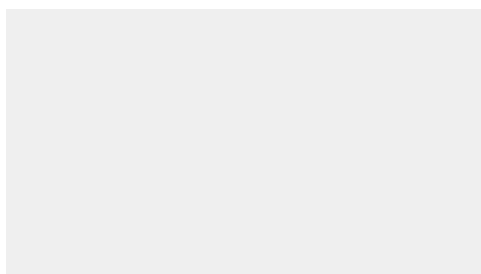
wheel



whisk



white



who

