

Ll

Begins with **l**

lamp



love

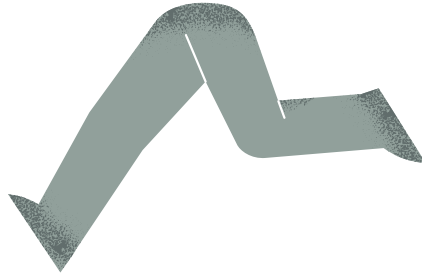


Ends with **l**

ball



leg



lunch



lion



pencil



Rr

Begins with **r**

rat



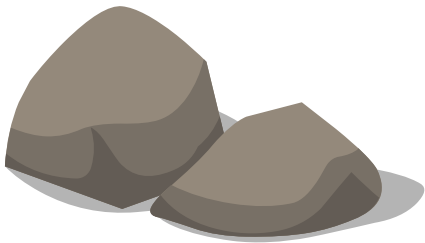
red



ribbon



rock



run

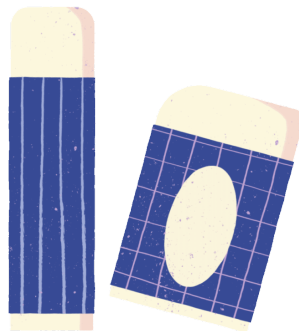


Ends with **r**

car



eraser



color

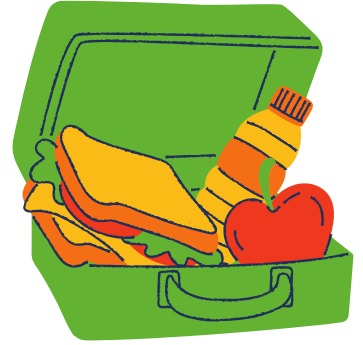
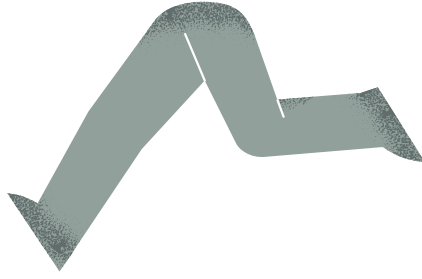


Ll

Rr

Say the word.

Does it begin with **l** or **r**?



Say the word.

Does it end with **l** or **r**?

