

Ss

Begins with **s**

sax



seven



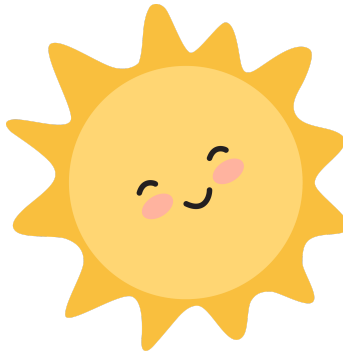
sit



socks



sun



Ends with **s**

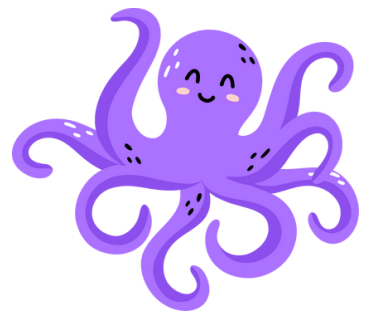
class



kiss



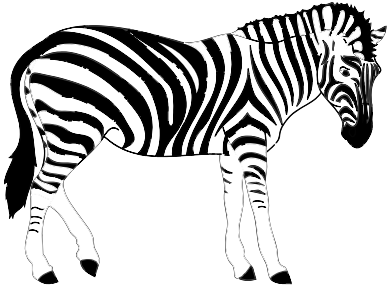
octopus



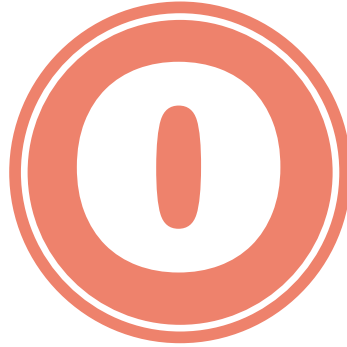
Zz

Begins with **z**

zebra



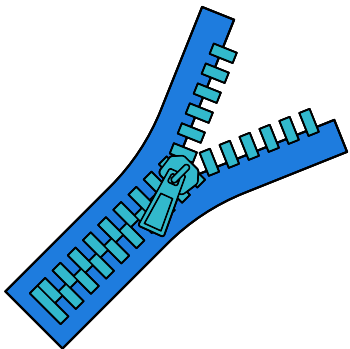
zero



zigzag



zipper



zoo

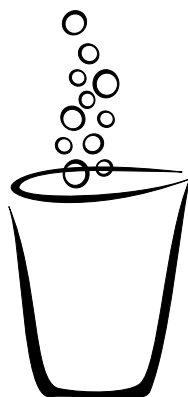


Ends with **z**

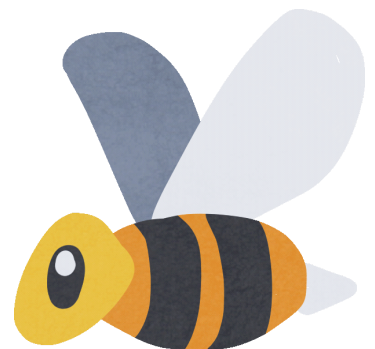
jazz



fizz



buzz

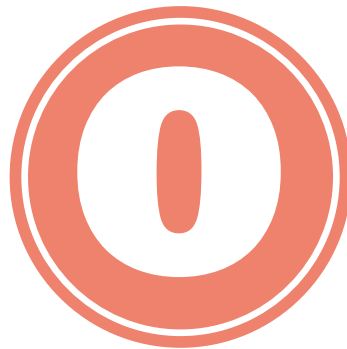
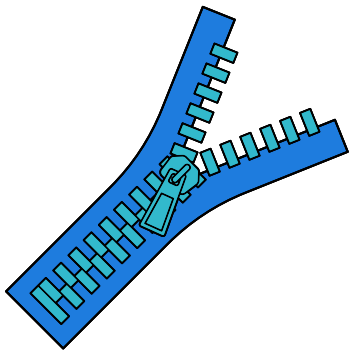
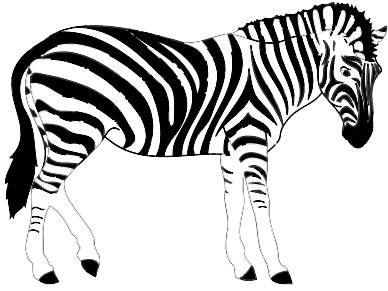


Ss

Zz

Say the word.

Does it begin with **s** or **z**?



Say the word.

Does it end with **s** or **z**?

