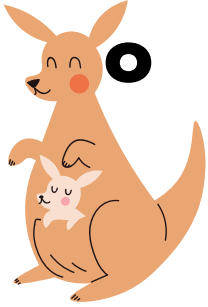


Kk

Begins with **k**

kangaro



key



kick



kid



king



koal

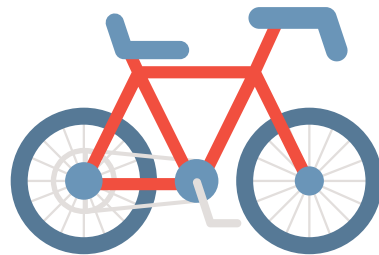


Ends with **k**

cake



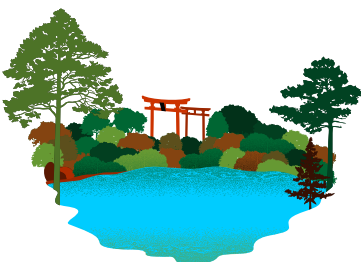
bike



book



lake



like



pink



Qq

Begins with **q**

quack



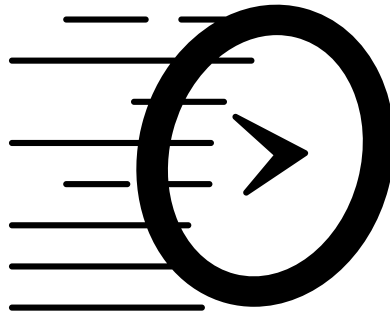
question



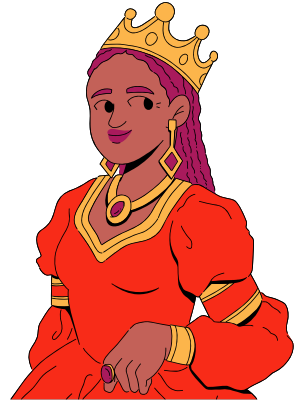
quail



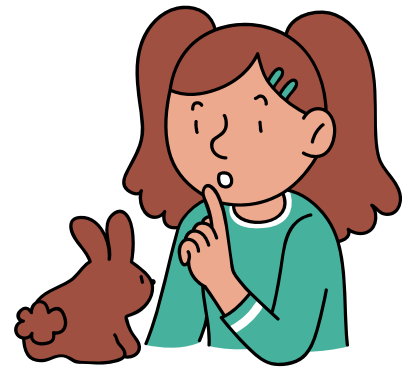
quick



queen



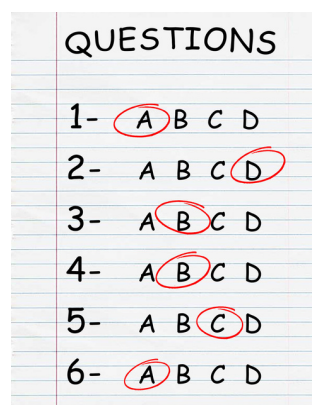
quiet



quilt



quiz



Xx

Ends with **x**

ax



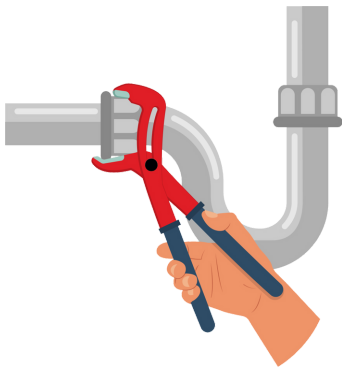
sax



wax



fix



mix



six



box



fox



ox

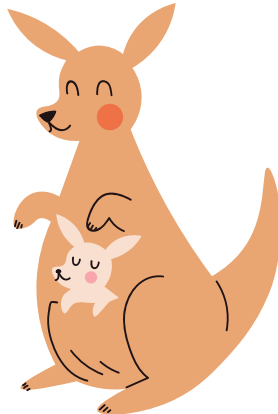
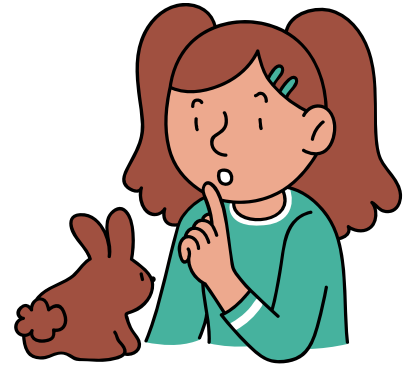
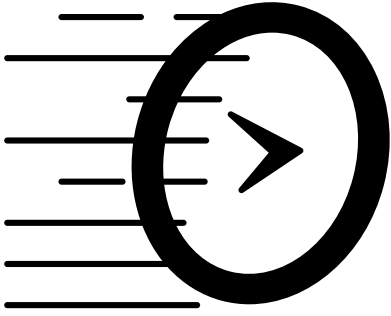


Kk

Qq

Say the word.

Does it begin with **k** or **q**?



Kk

Xx

Say the word.

Does it end with **k** or **x**?

