



EIKEN 4 LESSON 30:

1. Smithfield School Bus Trip 2. to Washington D.C.

3. Meet in the school cafeteria at 2:00 p.m. on Friday, June 7th
4. The bus leaves at 2:30.
5. We will have a dinner at an Italian restaurant at 5:30.
6. We will arrive at hotel at 8:00 on Friday night.
7. We will get back to school on 5:00 p.m. Sunday.



Further Questions & Answer:

8. **1)** Where and when are the students from Smithfield School going?
9. *They are going to Washington D.C.*
10. **2)** Where will the student meet to go on the trip?
11. *They will meet in the school cafeteria at 2:00 p.m.*





12. **3)** Where will they eat dinner?

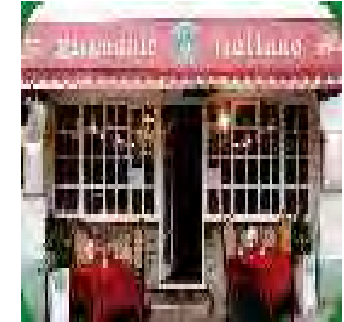
13. *They will eat dinner in an Italian restaurant*

14. **4)** When will they get to the hotel?

15. *They will get to the hotel at 8:00 on Friday night.*

16. **5)** How long is the trip?

17. *It is about two days long.*



Choose the correct answer from these choices:

18. **(26)** What time will the bus leave on Friday?

19. 1 at 2:00 p.m.

20. 2 at 2:30 p.m.

21. 3 at 5:00 p.m.

22. 4 at 5:30 p.m.



23. (27) Where will the student eat dinner on Friday night?

24. 1 at Home

25. 2 at a restaurant

26. 3 at a hotel

27. 4 at school.



Review Questions:

28. 1) Where and when are the students from Smithfield School going?

29. *They are going to Washington D.C.*

30. 2) Where will the student meet to go on the trip?

31. *They will meet in the school cafeteria at 2:00 p.m.*

32. 3) Where will they eat dinner?

33. *They will eat dinner in an Italian restaurant*



34. **4)** When will they get to the hotel?

35. *They will get to the hotel at 8:00 on Friday night.*

36. **5)** How long is the trip?

37. *It is about two days long.*

