

Cc (hard)

Begins with hard **c**

cap



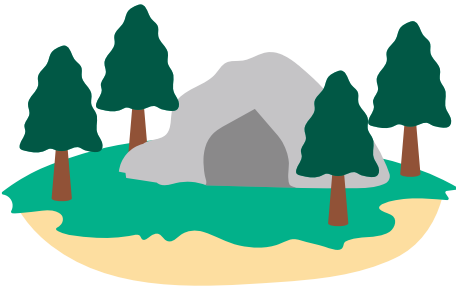
car



cat



cave



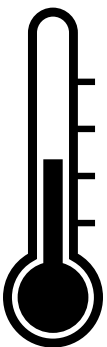
coat



cook



cool



cub



cute

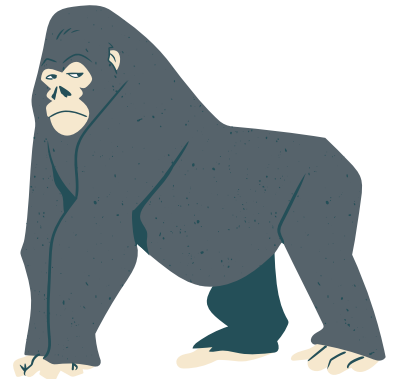
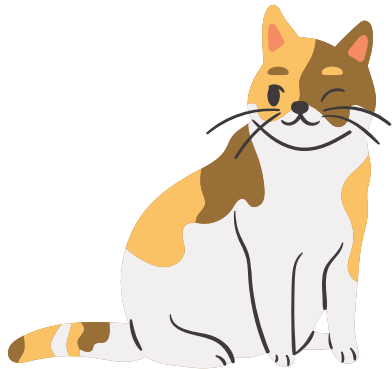
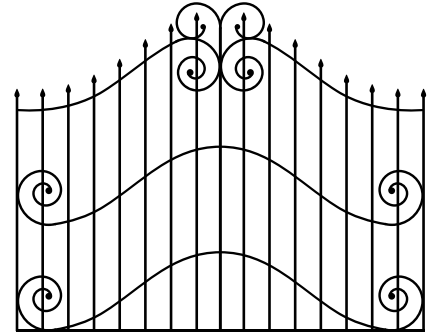
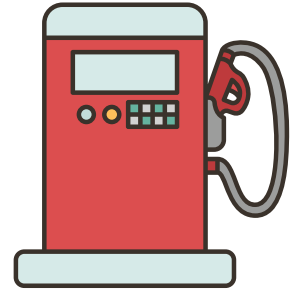


Gg (hard)

Cc (hard)

Say the word.

Does it begin with hard **g** or hard **c**?



Cc (soft)

Begins with soft **c**

celery



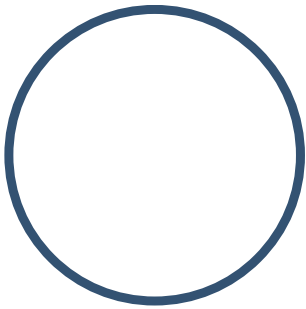
cellphone



cereal



circle



circus



city



Ends with soft **c**

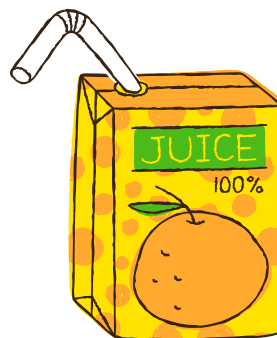
dance



face



juice



rice

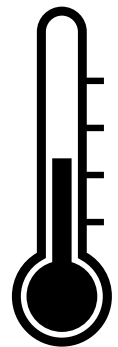
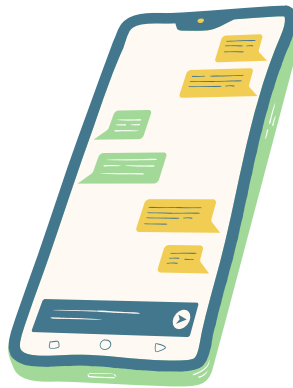
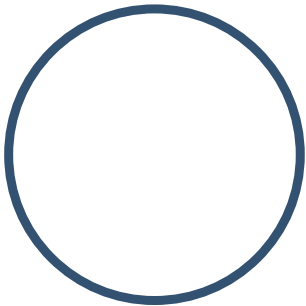
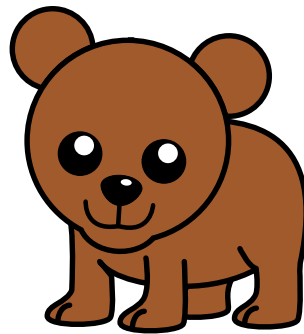
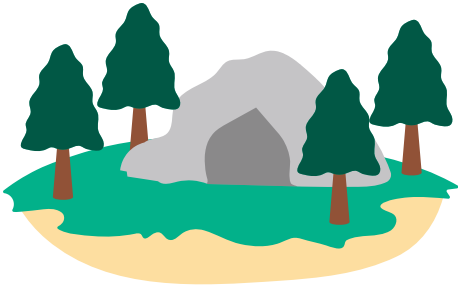


Cc
(hard)

Cc
(soft)

Say the word.

Does it begin with hard **c** or soft **c**?



Gg (soft)

Cc (soft)

Say the word.

Does it end with soft **g** or soft **c**?

