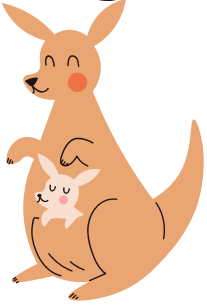


# Kk

Begins with **k**

**kangaroo**



**key**



**kick**



**kid**



**king**



**koala**

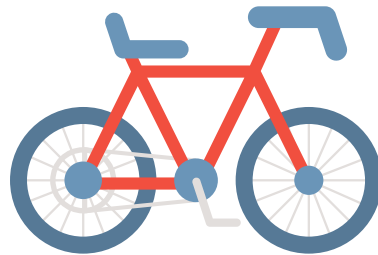


Ends with **k**

**cake**



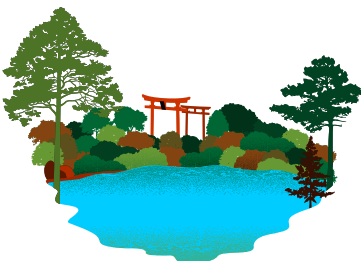
**bike**



**book**



**lake**



**like**



**pink**



# Qq

Begins with q

**quack**



**question**



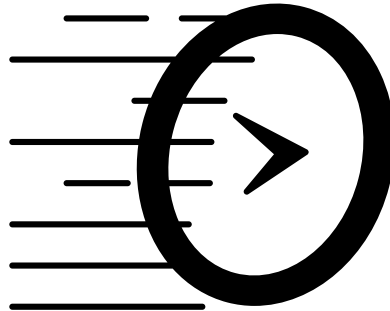
**quilt**



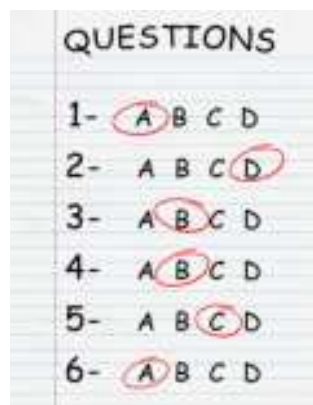
**quail**



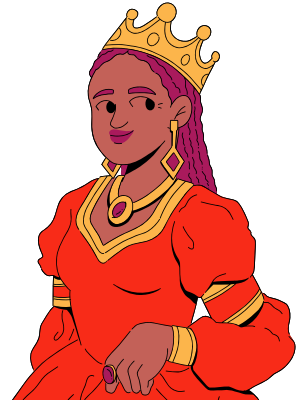
**quick**



**quiz**



**queen**



**quiet**



# Xx

Ends with x

**ax**



**sax**



**wax**



**fix**



**mix**



**six**



**box**



**fox**



**ox**

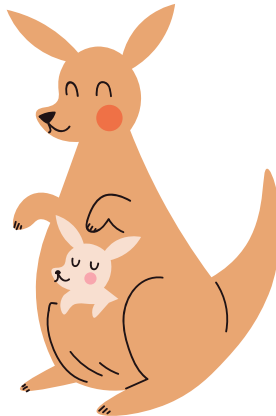
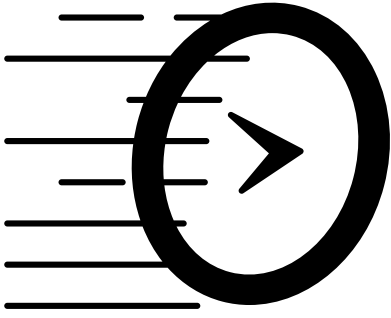


# Kk

# Qq

Say the word.

Does it begin with **k** or **q**?



# Kk

# Xx

Say the word.

Does it end with **k** or **x**?

